



[Go to Product page](#)

Datasheet for ABIN7270926

anti-TIMM22 antibody

2 Images

Overview

Quantity:	100 µL
Target:	TIMM22
Reactivity:	Mouse
Host:	Rabbit
Clonality:	Polyclonal
Conjugate:	This TIMM22 antibody is un-conjugated
Application:	Western Blotting (WB), Immunoprecipitation (IP)

Product Details

Purpose:	Timm22 Rabbit pAb
Immunogen:	Recombinant protein of Mouse Timm22.
Isotype:	IgG
Cross-Reactivity:	Human, Mouse, Rat
Characteristics:	Polyclonal Antibodies
Purification:	Affinity purification

Target Details

Target:	TIMM22
Alternative Name:	Timm22 (TIMM22 Products)
Background:	Essential core component of the TIM22 complex, a complex that mediates the import and

Target Details

insertion of multi-pass transmembrane proteins into the mitochondrial inner membrane. In the TIM22 complex, it constitutes the voltage-activated and signal-gated channel. Forms a twin-pore translocase that uses the membrane potential as external driving force in 2 voltage-dependent steps (By similarity.,Tim22,Timm22

Molecular Weight: 20kDa

Gene ID: 56322

UniProt: [Q9CQ85](#)

Application Details

Application Notes: WB,1:500 - 1:2000,IP,1:50 - 1:200

Restrictions: For Research Use only

Handling

Format: Liquid

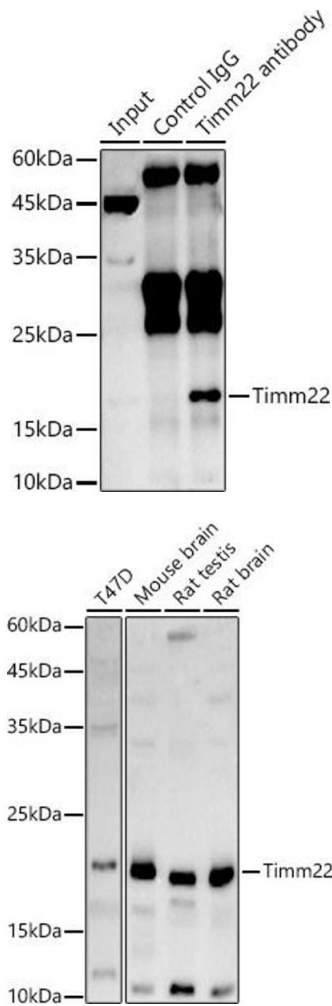
Buffer: PBS with 0.02 % sodium azide,50 % glycerol, pH 7.3.

Preservative: Sodium azide

Precaution of Use: This product contains Sodium azide: a POISONOUS AND HAZARDOUS SUBSTANCE which should be handled by trained staff only.

Storage: -20 °C

Storage Comment: Store at -20°C. Avoid freeze / thaw cycles.



Immunoprecipitation

Image 1. Immunoprecipitation analysis of 600 µg extracts of Rat brain cells using 3 µg Timm22 antibody (ABIN7270926). Western blot was performed from the immunoprecipitate using Timm22 antibody (ABIN7270926) at a dilution of 1:500.

Western Blotting

Image 2. Western blot analysis of extracts of various cell lines, using Timm22 antibody (ABIN7270926) at 1:1000 dilution. Secondary antibody: HRP Goat Anti-Rabbit IgG (H+L) (ABIN1684268 and ABIN3020597) at 1:10000 dilution. Lysates/proteins: 25 µg per lane. Blocking buffer: 3 % nonfat dry milk in TBST. Detection: ECL Basic Kit (RM00020). Exposure time: 180s.