



[Go to Product page](#)

Datasheet for ABIN7270928
anti-TIMM8B antibody (AA 16-98)

6 Images

Overview

Quantity:	100 µL
Target:	TIMM8B
Binding Specificity:	AA 16-98
Reactivity:	Human
Host:	Rabbit
Clonality:	Polyclonal
Conjugate:	This TIMM8B antibody is un-conjugated
Application:	Immunohistochemistry (IHC), Western Blotting (WB), Immunofluorescence (IF)

Product Details

Purpose:	TIMM8B Rabbit pAb
Immunogen:	Recombinant fusion protein containing a sequence corresponding to amino acids 16-98 of human TIMM8B (NP_036591.2).
Sequence:	MAELGEADEA ELQRLVAAEQ QKAQFTAQVH HFMELCWDKC VEKPGNRLDS RTENCLSSCV DRFIDTTLAI TSRFAQIVQK GGQ
Isotype:	IgG
Cross-Reactivity:	Human, Mouse, Rat
Characteristics:	Polyclonal Antibodies
Purification:	Affinity purification

Target Details

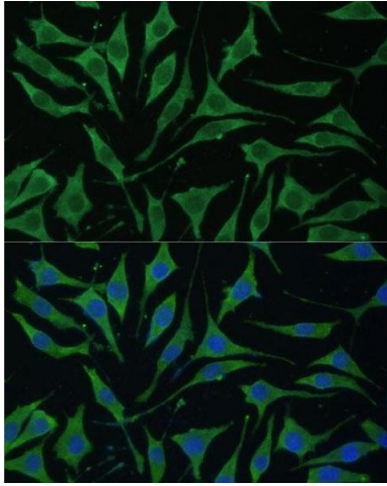
Target:	TIMM8B
Alternative Name:	TIMM8B (TIMM8B Products)
Background:	This gene encodes a member of a well-conserved family of proteins with similarity to yeast Tim mitochondrial import proteins. This gene is encoded by a nuclear gene and is transported into the intermembrane space of the mitochondrion. When formed into complexes, these proteins guide membrane-spanning proteins across the mitochondrial intermembrane space before they are added into the mitochondrial inner membrane. This gene is adjacent to succinate dehydrogenase, subunit D (SDHD), in which mutations have been found in affected members of families with hereditary paraganglioma.,TIMM8B,DDP2,TIM8B,Endocrine & Metabolism,Mitochondrial metabolism,TIMM8B
Molecular Weight:	9kDa
Gene ID:	26521
UniProt:	Q9Y5J9
Pathways:	Sensory Perception of Sound , SARS-CoV-2 Protein Interactome

Application Details

Application Notes:	WB,1:500 - 1:2000,IHC,1:50 - 1:100,IF,1:50 - 1:100
Restrictions:	For Research Use only

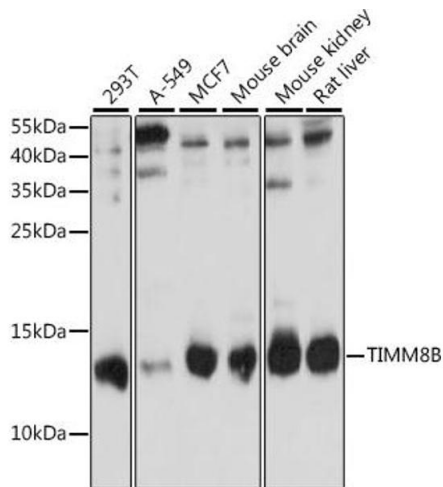
Handling

Format:	Liquid
Buffer:	PBS with 0.02 % sodium azide,50 % glycerol, pH 7.3.
Preservative:	Sodium azide
Precaution of Use:	This product contains Sodium azide: a POISONOUS AND HAZARDOUS SUBSTANCE which should be handled by trained staff only.
Storage:	-20 °C
Storage Comment:	Store at -20°C. Avoid freeze / thaw cycles.



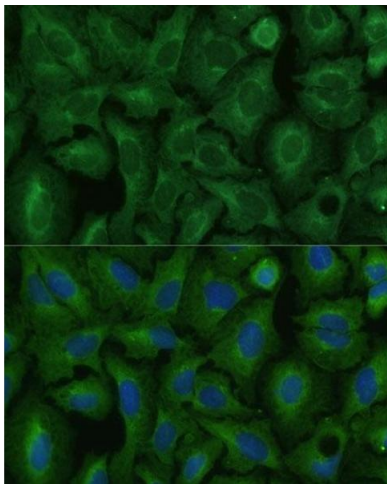
Immunofluorescence

Image 1. Immunofluorescence analysis of L929 cells using TIMM8B Polyclonal Antibody (ABIN7270928) at dilution of 1:100 (40x lens). Blue: DAPI for nuclear staining.



Western Blotting

Image 2. Western blot analysis of extracts of various cell lines, using TIMM8B antibody (ABIN7270928) at 1:1000 dilution. Secondary antibody: HRP Goat Anti-Rabbit IgG (H+L) (ABIN1684268 and ABIN3020597) at 1:10000 dilution. Lysates/proteins: 25 µg per lane. Blocking buffer: 3 % nonfat dry milk in TBST. Detection: ECL Basic Kit (RM00020). Exposure time: 90s.



Immunofluorescence

Image 3. Immunofluorescence analysis of U-2 OS cells using TIMM8B Polyclonal Antibody (ABIN7270928) at dilution of 1:100 (40x lens). Blue: DAPI for nuclear staining.

Please check the [product details page](#) for more images. Overall 6 images are available for ABIN7270928.