



Datasheet for ABIN7270929  
**anti-TIMMDC1 antibody (AA 206-285)**



[Go to Product page](#)

4 Images

Overview

Quantity:	100 µL
Target:	TIMMDC1
Binding Specificity:	AA 206-285
Reactivity:	Human
Host:	Rabbit
Clonality:	Polyclonal
Conjugate:	This TIMMDC1 antibody is un-conjugated
Application:	Western Blotting (WB), Immunohistochemistry (IHC)

Product Details

Purpose:	TIMMDC1 Rabbit pAb
Immunogen:	Recombinant fusion protein containing a sequence corresponding to amino acids 206-285 of human TIMMDC1 (NP_057673.2).
Sequence:	LMAFQKYSGE TVQERKQKDR KALHELKLEE WKGRLQVTEH LPEKIESSLQ EDEPENDAKK IEALLNLPRN PSVIDKQDKD
Isotype:	IgG
Cross-Reactivity:	Human, Mouse, Rat
Characteristics:	Polyclonal Antibodies
Purification:	Affinity purification

## Target Details

---

Target:	TIMMDC1
Alternative Name:	TIMMDC1 ( <a href="#">TIMMDC1 Products</a> )
Background:	Chaperone protein involved in the assembly of the mitochondrial NADH:ubiquinone oxidoreductase complex (complex I. Participates in constructing the membrane arm of complex I.,TIMMDC1,C3orf1,Cell Biology & Developmental Biology,TIMMDC1
Molecular Weight:	32kDa
Gene ID:	51300
UniProt:	<a href="#">Q9NPL8</a>

## Application Details

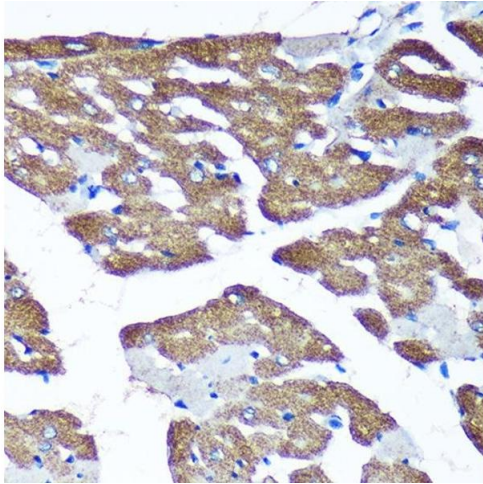
---

Application Notes:	WB,1:500 - 1:2000,IHC,1:50 - 1:200
Restrictions:	For Research Use only

## Handling

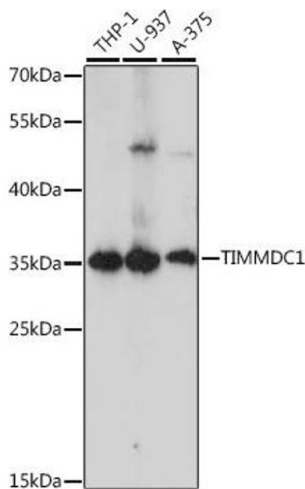
---

Format:	Liquid
Buffer:	PBS with 0.02 % sodium azide,50 % glycerol, pH 7.3.
Preservative:	Sodium azide
Precaution of Use:	This product contains Sodium azide: a POISONOUS AND HAZARDOUS SUBSTANCE which should be handled by trained staff only.
Storage:	-20 °C
Storage Comment:	Store at -20°C. Avoid freeze / thaw cycles.



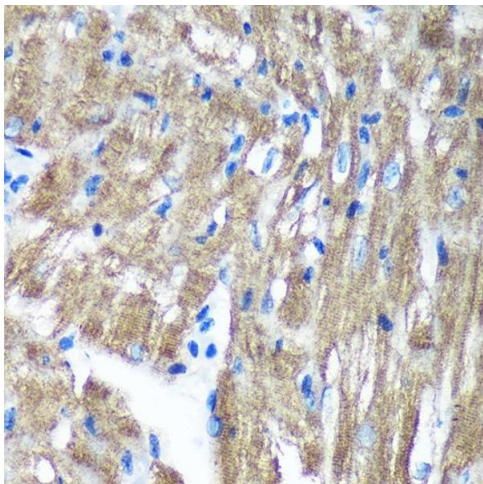
### Immunohistochemistry

**Image 1.** Immunohistochemistry of paraffin-embedded Rat heart using TIMMDC1 Rabbit pAb (ABIN7270929) at dilution of 1:100 (40x lens). Perform microwave antigen retrieval with 10 mM PBS buffer pH 7.2 before commencing with IHC staining protocol.



### Western Blotting

**Image 2.** Western blot analysis of extracts of various cell lines, using TIMMDC1 antibody (ABIN7270929) at 1:1000 dilution. Secondary antibody: HRP Goat Anti-Rabbit IgG (H+L) (ABIN1684268 and ABIN3020597) at 1:10000 dilution. Lysates/proteins: 25 µg per lane. Blocking buffer: 3 % nonfat dry milk in TBST. Detection: ECL Basic Kit (RM00020). Exposure time: 10s.



### Immunohistochemistry

**Image 3.** Immunohistochemistry of paraffin-embedded Mouse heart using TIMMDC1 Rabbit pAb (ABIN7270929) at dilution of 1:100 (40x lens). Perform microwave antigen retrieval with 10 mM PBS buffer pH 7.2 before commencing with IHC staining protocol.

Please check the [product details page](#) for more images. Overall 4 images are available for ABIN7270929.