

Datasheet for ABIN7270930
anti-TOMM22 antibody



[Go to Product page](#)

3 Images

Overview

Quantity:	100 µL
Target:	TOMM22
Reactivity:	Human
Host:	Rabbit
Clonality:	Monoclonal
Conjugate:	This TOMM22 antibody is un-conjugated
Application:	Western Blotting (WB), Immunohistochemistry (IHC)

Product Details

Purpose:	TOMM22 Rabbit mAb
Immunogen:	A synthesized peptide derived from human TOMM22
Isotype:	IgG
Cross-Reactivity:	Human, Mouse, Rat
Characteristics:	Monoclonal Antibodies
Purification:	Affinity purification

Target Details

Target:	TOMM22
Alternative Name:	TOMM22 (TOMM22 Products)
Background:	The protein encoded by this gene is an integral membrane protein of the mitochondrial outer

Target Details

membrane. The encoded protein interacts with TOMM20 and TOMM40, and forms a complex with several other proteins to import cytosolic preproteins into the mitochondrion. [provided by RefSeq, Jul 2008],1C9-2, MST065, MSTP065, TOM22,Endocrine & Metabolism,Mitochondrial metabolism,Mitochondrial metabolism_Mitochondrial Biogenesis,Signal Transduction,TOMM22

Molecular Weight: 18kDa

Gene ID: 56993

UniProt: [Q9NS69](#)

Application Details

Application Notes: WB,1:500 - 1:2000,IHC,1:50 - 1:200

Restrictions: For Research Use only

Handling

Format: Liquid

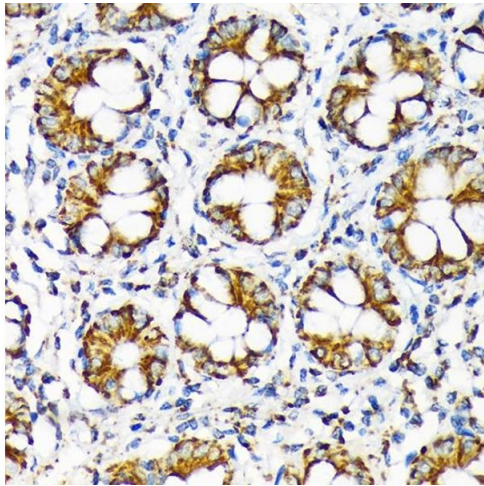
Buffer: PBS with 0.02 % sodium azide,0.05 % BSA,50 % glycerol, pH 7.3.

Preservative: Sodium azide

Precaution of Use: This product contains Sodium azide: a POISONOUS AND HAZARDOUS SUBSTANCE which should be handled by trained staff only.

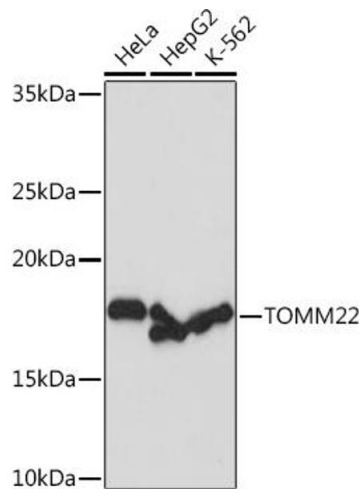
Storage: -20 °C

Storage Comment: Store at -20°C. Avoid freeze / thaw cycles.



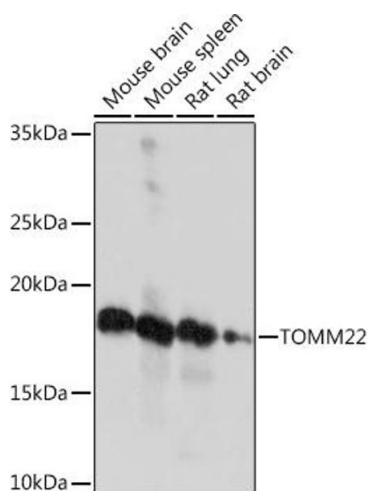
Immunohistochemistry

Image 1. Immunohistochemistry of paraffin-embedded human colon using TOMM22 Rabbit mAb (ABIN7270930) at dilution of 1:100 (40x lens). Perform microwave antigen retrieval with 10 mM Tris/EDTA buffer pH 9.0 before commencing with IHC staining protocol.



Western Blotting

Image 2. Western blot analysis of extracts of various cell lines, using TOMM22 Rabbit mAb (ABIN7270930) at 1:1000 dilution. Secondary antibody: HRP Goat Anti-Rabbit IgG (H+L) (ABIN1684268 and ABIN3020597) at 1:10000 dilution. Lysates/proteins: 25 µg per lane. Blocking buffer: 3 % nonfat dry milk in TBST. Detection: ECL Basic Kit (RM00020). Exposure time: 1s.



Western Blotting

Image 3. Western blot analysis of extracts of various cell lines, using TOMM22 Rabbit mAb (ABIN7270930) at 1:1000 dilution. Secondary antibody: HRP Goat Anti-Rabbit IgG (H+L) (ABIN1684268 and ABIN3020597) at 1:10000 dilution. Lysates/proteins: 25 µg per lane. Blocking buffer: 3 % nonfat dry milk in TBST. Detection: ECL Enhanced Kit (RM00021). Exposure time: 3 min.