



[Go to Product page](#)

Datasheet for ABIN7270936
anti-TM4SF19 antibody (AA 50-150)

1 Image

Overview

Quantity:	100 µL
Target:	TM4SF19
Binding Specificity:	AA 50-150
Reactivity:	Human
Host:	Rabbit
Clonality:	Polyclonal
Conjugate:	This TM4SF19 antibody is un-conjugated
Application:	Western Blotting (WB)

Product Details

Purpose:	TM4SF19 Rabbit pAb
Immunogen:	A synthetic peptide corresponding to a sequence within amino acids 50-150 of human TM4SF19 (NP_001191827.1).
Isotype:	IgG
Cross-Reactivity:	Human, Mouse
Characteristics:	Polyclonal Antibodies
Purification:	Affinity purification

Target Details

Target:	TM4SF19
---------	---------

Target Details

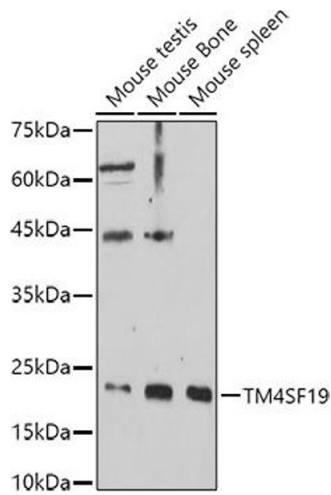
Alternative Name:	TM4SF19 (TM4SF19 Products)
Background:	The protein encoded by this gene is a member of the four-transmembrane L6 superfamily. Members of this family function in various cellular processes including cell proliferation, motility, and adhesion via their interactions with integrins. In human brain tissue, this gene is expressed at high levels in the parietal lobe, occipital lobe, hippocampus, pons, white matter, corpus callosum, and cerebellum. Alternative splicing results in multiple transcript variants encoding different isoforms.,OCTM4,TM4SF19
Molecular Weight:	22kDa
Gene ID:	116211
UniProt:	Q96DZ7

Application Details

Application Notes:	WB,1:500 - 1:2000
Restrictions:	For Research Use only

Handling

Format:	Liquid
Buffer:	PBS with 0.02 % sodium azide,50 % glycerol, pH 7.3.
Preservative:	Sodium azide
Precaution of Use:	This product contains Sodium azide: a POISONOUS AND HAZARDOUS SUBSTANCE which should be handled by trained staff only.
Storage:	-20 °C
Storage Comment:	Store at -20°C. Avoid freeze / thaw cycles.



Western Blotting

Image 1. Western blot analysis of extracts of various cell lines, using TM4SF19 antibody (ABIN7270936) at 1:1000 dilution. Secondary antibody: HRP Goat Anti-Rabbit IgG (H+L) (ABIN1684268 and ABIN3020597) at 1:10000 dilution. Lysates/proteins: 25 µg per lane. Blocking buffer: 3 % nonfat dry milk in TBST. Detection: ECL Enhanced Kit (RM00021). Exposure time: 180s.