

Datasheet for ABIN7270946
anti-TMPRSS2 antibody[Go to Product page](#)

2 Images

Overview

Quantity:	100 µL
Target:	TMPRSS2
Reactivity:	Human
Host:	Rabbit
Clonality:	Monoclonal
Conjugate:	This TMPRSS2 antibody is un-conjugated
Application:	Western Blotting (WB), Immunohistochemistry (IHC)

Product Details

Purpose:	TMPRSS2 Rabbit mAb
Immunogen:	A synthesized peptide derived from human TMPRSS2
Isotype:	IgG
Cross-Reactivity:	Human, Mouse, Rat
Characteristics:	Monoclonal Antibodies
Purification:	Affinity purification

Target Details

Target:	TMPRSS2
Alternative Name:	TMPRSS2 (TMPRSS2 Products)
Background:	This gene encodes a protein that belongs to the serine protease family. The encoded protein

Target Details

contains a type II transmembrane domain, a receptor class A domain, a scavenger receptor cysteine-rich domain and a protease domain. Serine proteases are known to be involved in many physiological and pathological processes. This gene was demonstrated to be up-regulated by androgenic hormones in prostate cancer cells and down-regulated in androgen-independent prostate cancer tissue. The protease domain of this protein is thought to be cleaved and secreted into cell media after autocleavage. Alternatively spliced transcript variants encoding different isoforms have been found for this gene. [provided by RefSeq, Sep 2008],PP9284, PRSS10,Cancer,Cell Biology & Developmental Biology,Neurodegenerative Diseases,Neuroscience,Tumor biomarkers,Ubiquitin,TMPRSS2

Molecular Weight: 54kDa

Gene ID: 7113

UniProt: [O15393](#)

Pathways: [SARS-CoV-2 Protein Interactome](#)

Application Details

Application Notes: WB,1:500 - 1:2000,IHC,1:50 - 1:200

Restrictions: For Research Use only

Handling

Format: Liquid

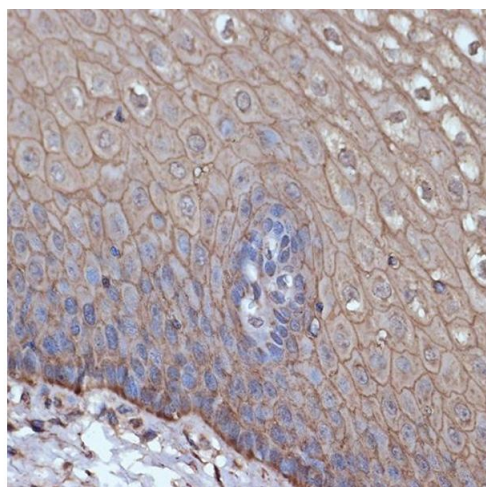
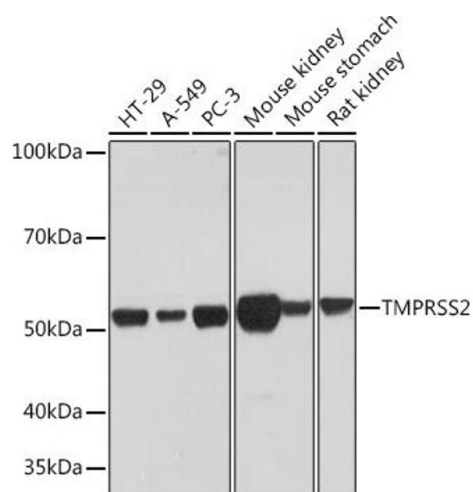
Buffer: PBS with 0.02 % sodium azide,0.05 % BSA,50 % glycerol, pH 7.3.

Preservative: Sodium azide

Precaution of Use: This product contains Sodium azide: a POISONOUS AND HAZARDOUS SUBSTANCE which should be handled by trained staff only.

Storage: -20 °C

Storage Comment: Store at -20°C. Avoid freeze / thaw cycles.



Western Blotting

Image 1. Western blot analysis of extracts of various cell lines, using TMPRSS2 Rabbit mAb (ABIN7270946) at 1:1000 dilution. Secondary antibody: HRP Goat Anti-Rabbit IgG (H+L) (ABIN1684268 and ABIN3020597) at 1:10000 dilution. Lysates/proteins: 25 µg per lane. Blocking buffer: 3 % nonfat dry milk in TBST. Detection: ECL Enhanced Kit (RM00021). Exposure time: 3 min.

Immunohistochemistry

Image 2. Immunohistochemistry of paraffin-embedded human esophageal using TMPRSS2 Rabbit mAb (ABIN7270946) at dilution of 1:100 (40x lens). Perform microwave antigen retrieval with 10 mM Tris/EDTA buffer pH 9.0 before commencing with IHC staining protocol.