



[Go to Product page](#)

Datasheet for ABIN7270950  
**anti-TMEM100 antibody (C-Term)**

1 Image

Overview

Quantity:	100 µL
Target:	TMEM100
Binding Specificity:	C-Term
Reactivity:	Human
Host:	Rabbit
Clonality:	Polyclonal
Conjugate:	This TMEM100 antibody is un-conjugated
Application:	Western Blotting (WB)

Product Details

Purpose:	TMEM100 Rabbit pAb
Immunogen:	A synthetic peptide corresponding to a sequence within amino acids 50 to the C-terminus of human TMEM100 (NP_001093110.1).
Sequence:	ELSCYRCIIP FAVVFIAGI VVTAVAYSFN SHGSIISIFG LVLSSGLFL LASSALCWKV RQRSKKAKRR ESQTALVANQ RSLFA
Isotype:	IgG
Cross-Reactivity:	Human, Mouse
Characteristics:	Polyclonal Antibodies
Purification:	Affinity purification

## Target Details

---

Target:	TMEM100
Alternative Name:	TMEM100 ( <a href="#">TMEM100 Products</a> )
Background:	Plays a role during embryonic arterial endothelium differentiation and vascular morphogenesis through the ACVRL1 receptor-dependent signaling pathway upon stimulation by bone morphogenetic proteins, such as GDF2/BMP9 and BMP10. Involved in the regulation of nociception, acting as a modulator of the interaction between TRPA1 and TRPV1, two molecular sensors and mediators of pain signals in dorsal root ganglia (DRG neurons). Mechanistically, it weakens their interaction, thereby releasing the inhibition of TRPA1 by TRPV1 and increasing the single-channel open probability of the TRPA1-TRPV1 complex.,TMEM100,TMEM100
Molecular Weight:	14kDa
Gene ID:	55273
UniProt:	<a href="#">Q9NV29</a>

## Application Details

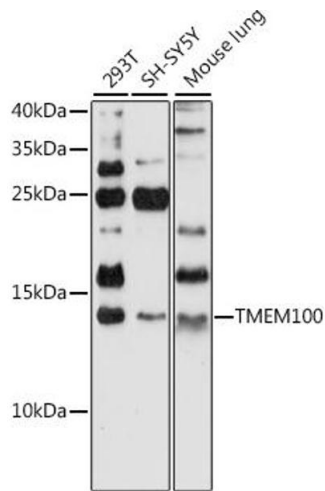
---

Application Notes:	WB,1:500 - 1:2000
Restrictions:	For Research Use only

## Handling

---

Format:	Liquid
Buffer:	PBS with 0.02 % sodium azide,50 % glycerol, pH 7.3.
Preservative:	Sodium azide
Precaution of Use:	This product contains Sodium azide: a POISONOUS AND HAZARDOUS SUBSTANCE which should be handled by trained staff only.
Storage:	-20 °C
Storage Comment:	Store at -20°C. Avoid freeze / thaw cycles.



### Western Blotting

**Image 1.** Western blot analysis of extracts of various cell lines, using TMEM100 antibody (ABIN7270950) at 1:1000 dilution. Secondary antibody: HRP Goat Anti-Rabbit IgG (H+L) (ABIN1684268 and ABIN3020597) at 1:10000 dilution. Lysates/proteins: 25 µg per lane. Blocking buffer: 3 % nonfat dry milk in TBST. Detection: ECL Basic Kit (RM00020). Exposure time: 90s.