

Datasheet for ABIN7270952
anti-TMEM11 antibody (AA 1-80)



[Go to Product page](#)

3 Images

Overview

| | |
|----------------------|--|
| Quantity: | 100 µL |
| Target: | TMEM11 |
| Binding Specificity: | AA 1-80 |
| Reactivity: | Human |
| Host: | Rabbit |
| Clonality: | Polyclonal |
| Conjugate: | This TMEM11 antibody is un-conjugated |
| Application: | Western Blotting (WB), Immunofluorescence (IF) |

Product Details

| | |
|-------------------|---|
| Purpose: | TMEM11 Rabbit pAb |
| Immunogen: | Recombinant fusion protein containing a sequence corresponding to amino acids 1-80 of human TMEM11 (NP_003867.1). |
| Sequence: | MAAWGRRRLG PGSSGGSARE RVLSATDCY IVHEIYNGEN AQDQFEYELE QALEAQYKYI VIEPTRIGDE TARWITVGNC |
| Isotype: | IgG |
| Cross-Reactivity: | Human, Mouse, Rat |
| Characteristics: | Polyclonal Antibodies |
| Purification: | Affinity purification |

Target Details

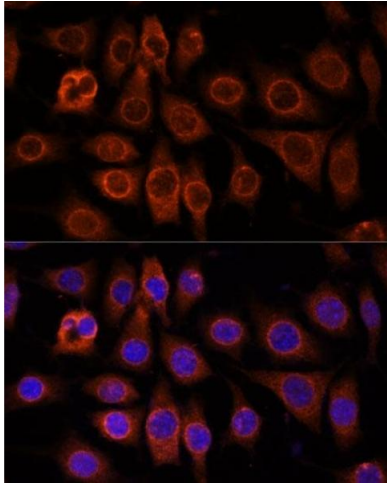
| | |
|-------------------|---|
| Target: | TMEM11 |
| Alternative Name: | TMEM11 (TMEM11 Products) |
| Background: | Plays a role in mitochondrial morphogenesis.,C17orf35,PM1,PMI,TMEM11,Signal Transduction,G protein signaling,G-Protein-Coupled Receptors(GPCR),Endocrine & Metabolism,Mitochondrial metabolism,Mitochondrial markers,TMEM11 |
| Molecular Weight: | 21kDa |
| Gene ID: | 8834 |
| UniProt: | P17152 |

Application Details

| | |
|--------------------|-----------------------------------|
| Application Notes: | WB,1:500 - 1:2000,IF,1:50 - 1:200 |
| Restrictions: | For Research Use only |

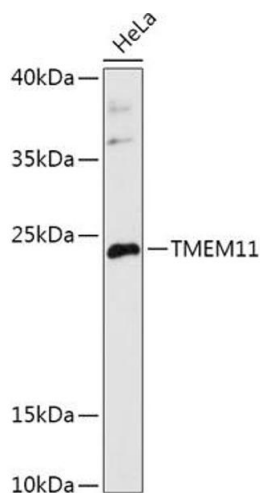
Handling

| | |
|--------------------|--|
| Format: | Liquid |
| Buffer: | PBS with 0.02 % sodium azide,50 % glycerol, pH 7.3. |
| Preservative: | Sodium azide |
| Precaution of Use: | This product contains Sodium azide: a POISONOUS AND HAZARDOUS SUBSTANCE which should be handled by trained staff only. |
| Storage: | -20 °C |
| Storage Comment: | Store at -20°C. Avoid freeze / thaw cycles. |



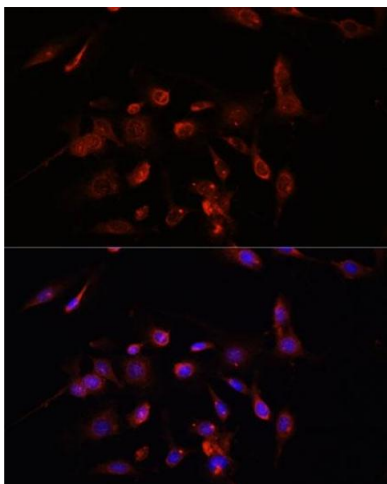
Immunofluorescence

Image 1. Immunofluorescence analysis of L929 cells using TMEM11 antibody (ABIN7270952) at dilution of 1:100. Blue: DAPI for nuclear staining.



Western Blotting

Image 2. Western blot analysis of extracts of HeLa cells, using TMEM11 antibody (ABIN7270952) at 1:1000 dilution. Secondary antibody: HRP Goat Anti-Rabbit IgG (H+L) (ABIN1684268 and ABIN3020597) at 1:10000 dilution. Lysates/proteins: 25 µg per lane. Blocking buffer: 3 % nonfat dry milk in TBST. Detection: ECL Basic Kit (RM00020). Exposure time: 3 min.



Immunofluorescence

Image 3. Immunofluorescence analysis of C6 cells using TMEM11 antibody (ABIN7270952) at dilution of 1:100. Blue: DAPI for nuclear staining.