



[Go to Product page](#)

Datasheet for ABIN7270964
anti-TMEM44 antibody (AA 110-260)

2 Images

Overview

Quantity:	100 µL
Target:	TMEM44
Binding Specificity:	AA 110-260
Reactivity:	Human
Host:	Rabbit
Clonality:	Polyclonal
Conjugate:	This TMEM44 antibody is un-conjugated
Application:	Immunofluorescence (IF), Western Blotting (WB)

Product Details

Purpose:	TMEM44 Rabbit pAb
Immunogen:	Recombinant fusion protein containing a sequence corresponding to amino acids 110-260 of human TMEM44 (NP_001159777.1).
Sequence:	VCGSKFKSNS DREARERKRR RQLRASVFAL ALPLSLGPCW ALWVAVPKAS ATIRGPQRRL LASLLQENTE ILGYLLGSVA AFGSWASRIP PLSRIAPPPT LGITTQHEIW RGQMSKPSQS PSRSPSGHWR AAAQRQVLGT EMCRGKTFPS I
Isotype:	IgG
Cross-Reactivity:	Mouse, Rat
Characteristics:	Polyclonal Antibodies
Purification:	Affinity purification

Target Details

Target:	TMEM44
Alternative Name:	TMEM44 (TMEM44 Products)
Background:	TMEM44,Cell Biology & Developmental Biology,TMEM44
Molecular Weight:	43kDa/47kDa/48kDa/52kDa
Gene ID:	93109
UniProt:	Q2T9K0

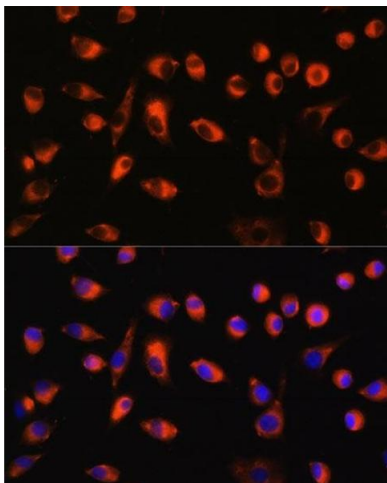
Application Details

Application Notes:	WB,1:500 - 1:2000,IF,1:50 - 1:200
Restrictions:	For Research Use only

Handling

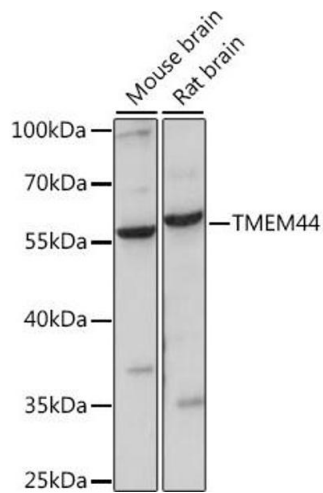
Format:	Liquid
Buffer:	PBS with 0.02 % sodium azide,50 % glycerol, pH 7.3.
Preservative:	Sodium azide
Precaution of Use:	This product contains Sodium azide: a POISONOUS AND HAZARDOUS SUBSTANCE which should be handled by trained staff only.
Storage:	-20 °C
Storage Comment:	Store at -20°C. Avoid freeze / thaw cycles.

Images



Immunofluorescence

Image 1. Immunofluorescence analysis of L929 cells using TMEM44 antibody (ABIN7270964) at dilution of 1:100. Blue: DAPI for nuclear staining.



Western Blotting

Image 2. Western blot analysis of extracts of various cell lines, using TMEM44 antibody (ABIN7270964) at 1:1000 dilution. Secondary antibody: HRP Goat Anti-Rabbit IgG (H+L) (ABIN1684268 and ABIN3020597) at 1:10000 dilution. Lysates/proteins: 25 µg per lane. Blocking buffer: 3 % nonfat dry milk in TBST. Detection: ECL Basic Kit (RM00020). Exposure time: 30s.