

Datasheet for ABIN7270972  
**anti-TFF1 antibody (pSer2)**[Go to Product page](#)

## 2 Images

## Overview

|                      |  |
|----------------------|--|
| Quantity:            | 100 µL   |
| Target:              | TFF1   |
| Binding Specificity: | pSer2  |
| Reactivity:          | Human  |
| Host:                | Rabbit   |
| Clonality:           | Monoclonal                                     |
| Conjugate:           | This TFF1 antibody is un-conjugated            |
| Application:         | Western Blotting (WB), Immunofluorescence (IF) |

## Product Details

|                   |   |
|-------------------|---|
| Purpose:          | TFF1/pS2 Rabbit mAb                               |
| Immunogen:        | A synthesized peptide derived from human TFF1/pS2 |
| Isotype:          | IgG   |
| Cross-Reactivity: | Human   |
| Characteristics:  | Monoclonal Antibodies                             |
| Purification:     | Affinity purification                             |

## Target Details

|                   |  |
|-------------------|--|
| Target:           | TFF1                                   |
| Alternative Name: | TFF1 ( <a href="#">TFF1 Products</a> ) |

## Target Details

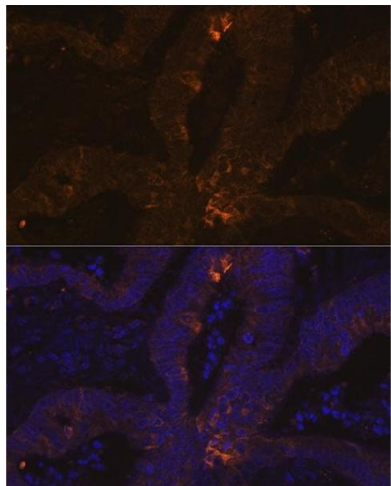
|                   |  |
|-------------------|--|
| Background:       | Members of the trefoil family are characterized by having at least one copy of the trefoil motif, a 40-amino acid domain that contains three conserved disulfides. They are stable secretory proteins expressed in gastrointestinal mucosa. Their functions are not defined, but they may protect the mucosa from insults, stabilize the mucus layer, and affect healing of the epithelium. This gene, which is expressed in the gastric mucosa, has also been studied because of its expression in human tumors. This gene and two other related trefoil family member genes are found in a cluster on chromosome 21. [provided by RefSeq, Jul 2008],BCEI, D21S21, HP1.A, HPS2, pNR-2, pS2,Cell Biology & Developmental Biology,Growth factors,Signal Transduction,TFF1 |
| Molecular Weight: | 9kDa   |
| Gene ID:          | 7031   |
| UniProt:          | <a href="#">P04155</a>   |
| Pathways:         | <a href="#">EGFR Signaling Pathway</a>   |

## Application Details

|                    |                                   |
|--------------------|-----------------------------------|
| Application Notes: | WB,1:500 - 1:2000,IF,1:50 - 1:200 |
| Restrictions:      | For Research Use only             |

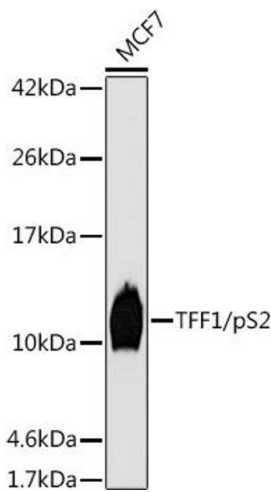
## Handling

|                    |  |
|--------------------|--|
| Format:            | Liquid   |
| Buffer:            | PBS with 0.02 % sodium azide,0.05 % BSA,50 % glycerol, pH 7.3.   |
| Preservative:      | Sodium azide   |
| Precaution of Use: | This product contains Sodium azide: a POISONOUS AND HAZARDOUS SUBSTANCE which should be handled by trained staff only. |
| Storage:           | -20 °C   |
| Storage Comment:   | Store at -20°C. Avoid freeze / thaw cycles.  |



Immunofluorescence

**Image 1.** Immunofluorescence analysis of human colon carcinoma using TFF1/pS2 Rabbit mAb (ABIN7270972) at dilution of 1:100 (40x lens). Blue: DAPI for nuclear staining.



Western Blotting

**Image 2.** Western blot analysis of extracts of MCF7 cells, using TFF1/pS2 antibody (ABIN7270972) at 1:1000 dilution. Secondary antibody: HRP Goat Anti-Rabbit IgG (H+L) (ABIN1684268 and ABIN3020597) at 1:10000 dilution. Lysates/proteins: 25 µg per lane. Blocking buffer: 3 % nonfat dry milk in TBST. Detection: ECL Basic Kit (RM00020). Exposure time: 180s.