



[Go to Product page](#)

Datasheet for ABIN7270991

## anti-TRIM47 antibody (AA 356-530)

### 2 Images

#### Overview

Quantity:	100 µL
Target:	TRIM47
Binding Specificity:	AA 356-530
Reactivity:	Human
Host:	Rabbit
Clonality:	Polyclonal
Conjugate:	This TRIM47 antibody is un-conjugated
Application:	Western Blotting (WB), Immunofluorescence (IF)

#### Product Details

Purpose:	TRIM47 Rabbit pAb
Immunogen:	Recombinant fusion protein containing a sequence corresponding to amino acids 356-530 of human TRIM47 (NP_258411.2).
Sequence:	ELSFTKSSQA VRAVRDMLAV ACVNQWEQLR GPGGNEDGPQ KLDSEADAEP QDLESTNLL SEAPRDYFLK FAYIVDLSD TADKFLQLFG TKGVKRVLCP INYPLSPTRF THCEQVLGEG ALDRGTYYYWE VEIIEGWVSM GVMAEDFSPQ EPYDRGRLGR NAHSCCLQWN GRSFS
Isotype:	IgG
Cross-Reactivity:	Human, Mouse, Rat
Characteristics:	Polyclonal Antibodies
Purification:	Affinity purification

## Target Details

Target:	TRIM47
Alternative Name:	TRIM47 ( <a href="#">TRIM47 Products</a> )
Background:	E3 ubiquitin-protein ligase that mediates the ubiquitination and proteasomal degradation of CYLD,GOA,RNF100,TRIM47,Cancer,Tumor biomarkers,TRIM47
Gene ID:	91107
UniProt:	<a href="#">Q96LD4</a>

## Application Details

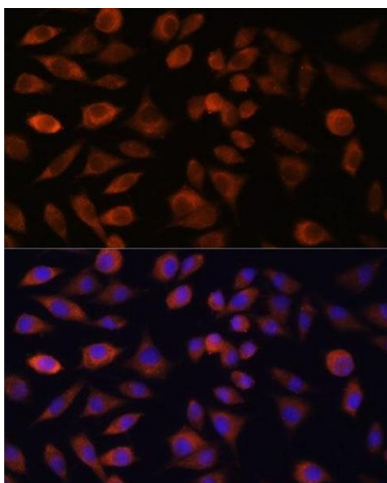
Application Notes: WB,1:500 - 1:2000,IF,1:50 - 1:200

Restrictions: For Research Use only

## Handling

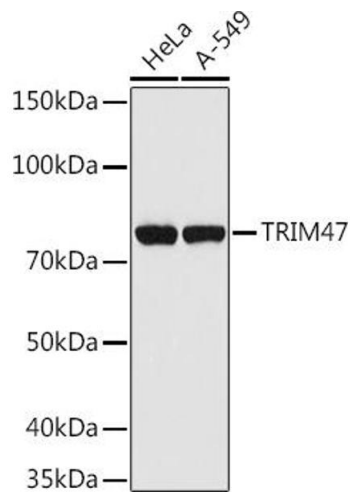
Format:	Liquid
Buffer:	PBS with 0.02 % sodium azide,50 % glycerol, pH 7.3.
Preservative:	Sodium azide
Precaution of Use:	This product contains Sodium azide: a POISONOUS AND HAZARDOUS SUBSTANCE which should be handled by trained staff only.
Storage:	-20 °C
Storage Comment:	Store at -20°C. Avoid freeze / thaw cycles.

## Images



### Immunofluorescence

**Image 1.** Immunofluorescence analysis of L929 cells using TRIM47 antibody (ABIN7270991) at dilution of 1:100. Blue: DAPI for nuclear staining.



### Western Blotting

**Image 2.** Western blot analysis of extracts of various cell lines, using TRIM47 antibody (ABIN7270991) at 1:1000 dilution. Secondary antibody: HRP Goat Anti-Rabbit IgG (H+L) (ABIN1684268 and ABIN3020597) at 1:10000 dilution. Lysates/proteins: 25 µg per lane. Blocking buffer: 3 % nonfat dry milk in TBST. Detection: ECL Basic Kit (RM00020). Exposure time: 30s.