

Datasheet for ABIN7271015
anti-TRUB2 antibody (AA 122-331)



[Go to Product page](#)

1 Image

Overview

Quantity:	100 µL
Target:	TRUB2
Binding Specificity:	AA 122-331
Reactivity:	Human
Host:	Rabbit
Clonality:	Polyclonal
Conjugate:	This TRUB2 antibody is un-conjugated
Application:	Western Blotting (WB)

Product Details

Purpose:	TRUB2 Rabbit pAb
Immunogen:	Recombinant fusion protein containing a sequence corresponding to amino acids 122-331 of human TRUB2 (NP_056494.1).
Sequence:	AHLTKDYTVR GLLGKATDDF REDGRLVEKT TYDHVTREKL DRILAVIQGS HQKALVMYSN LDLKTQEAYE MAVRGLIRPM NKSPMLITGI RCLYFAPPEF LLEVQCMHET QKELRKLVEH IGLELKTAV CTQVRRTRDG FFTLDSALLR TQWDLTNIQD AIRAATPQVA AELEKSLSPG LDTKQLPSPG WSWDSQGPSS TLGLERGAGQ
Isotype:	IgG
Cross-Reactivity:	Human
Characteristics:	Polyclonal Antibodies

Product Details

Purification: Affinity purification

Target Details

Target: TRUB2

Alternative Name: TRUB2 ([TRUB2 Products](#))

Background: Pseudouridine is an abundant component of rRNAs and tRNAs and is enzymatically generated by isomerization of uridine by pseudouridine synthase (Zucchini et al., 2003 [PubMed 12736709]), TRUB2, CLONE24922, Epigenetics & Nuclear Signaling, RNA Binding, TRUB2

Molecular Weight: 30kDa/36kDa

Gene ID: 26995

UniProt: [O95900](#)

Application Details

Application Notes: WB, 1:500 - 1:2000

Restrictions: For Research Use only

Handling

Format: Liquid

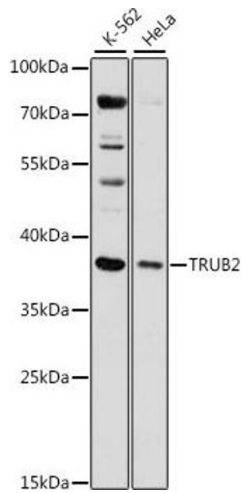
Buffer: PBS with 0.02 % sodium azide, 50 % glycerol, pH 7.3.

Preservative: Sodium azide

Precaution of Use: This product contains Sodium azide: a POISONOUS AND HAZARDOUS SUBSTANCE which should be handled by trained staff only.

Storage: -20 °C

Storage Comment: Store at -20°C. Avoid freeze / thaw cycles.



Western Blotting

Image 1. Western blot analysis of extracts of various cell lines, using TRUB2 antibody (ABIN7271015) at 1:1000 dilution. Secondary antibody: HRP Goat Anti-Rabbit IgG (H+L) (ABIN1684268 and ABIN3020597) at 1:10000 dilution. Lysates/proteins: 25 µg per lane. Blocking buffer: 3 % nonfat dry milk in TBST. Detection: ECL Basic Kit (RM00020). Exposure time: 15s.