

Datasheet for ABIN7271027

anti-Tuberin antibody**2** Images[Go to Product page](#)

Overview

| | |
|--------------|---|
| Quantity: | 100 µL |
| Target: | Tuberin (TSC2) |
| Reactivity: | Human |
| Host: | Rabbit |
| Clonality: | Monoclonal |
| Conjugate: | This Tuberin antibody is un-conjugated |
| Application: | Western Blotting (WB), Immunoprecipitation (IP) |

Product Details

| | |
|-------------------|---|
| Purpose: | TSC2 Rabbit mAb |
| Immunogen: | A synthesized peptide derived from human Tuberin. |
| Isotype: | IgG |
| Cross-Reactivity: | Human |
| Characteristics: | Monoclonal Antibodies |
| Purification: | Affinity purification |

Target Details

| | |
|-------------------|---|
| Target: | Tuberin (TSC2) |
| Alternative Name: | TSC2 (TSC2 Products) |
| Background: | Mutations in this gene lead to tuberous sclerosis complex. Its gene product is believed to be a |

Target Details

tumor suppressor and is able to stimulate specific GTPases. The protein associates with hamartin in a cytosolic complex, possibly acting as a chaperone for hamartin. Alternative splicing results in multiple transcript variants encoding different isoforms. [provided by RefSeq, Jul 2008],LAM,PPP1R160,TSC4,TSC2,Tuberin,tuberin,AMPK Signaling Pathway,Apoptosis,Autophagy,Autophagy_Regulator,Cancer,Cell Biology & Developmental Biology,Cell Cycle,Cell Cycle_Cell cycle inhibitors,Endocrine & Metabolism,Endocrine and metabolic diseases,Endocrine and metabolic diseases_Obesity,Epigenetics & Nuclear Signaling,G protein signaling,Immunology & Inflammation,Insulin Receptor Signaling Pathway,MAPK-Erk Signaling Pathway,mTOR Signaling Pathway,PI3K-Akt Signaling Pathway,PI3K-Akt Signaling Pathway_Akt downstream targets,Protein phosphorylation,Signal Transduction,Translation Control,Translational Control_Regulation of eIF4 and p70 S6 Kinase,Tumor suppressors,TSC2

Molecular Weight: 200kDa

Gene ID: 7249

UniProt: [P49815](#)

Pathways: [RTK Signaling](#), [AMPK Signaling](#), [Fc-epsilon Receptor Signaling Pathway](#), [EGFR Signaling Pathway](#), [Neurotrophin Signaling Pathway](#), [Regulation of Cell Size](#), [Tube Formation](#), [Protein targeting to Nucleus](#)

Application Details

Application Notes: WB,1:500 - 1:2000,IP,1:50 - 1:200

Restrictions: For Research Use only

Handling

Format: Liquid

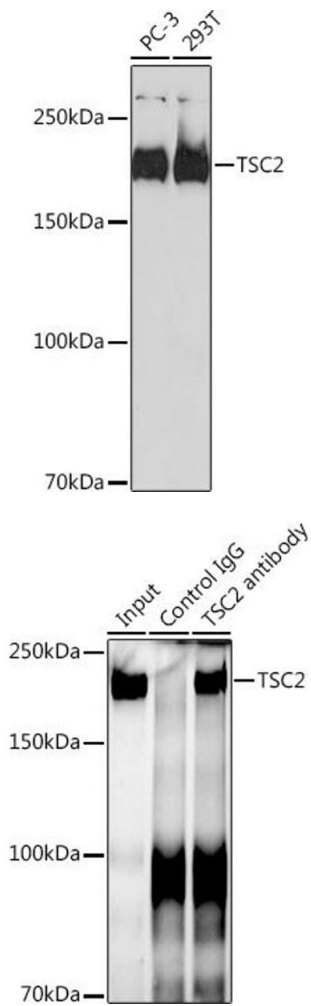
Buffer: PBS with 0.02 % sodium azide,0.05 % BSA,50 % glycerol, pH 7.3.

Preservative: Sodium azide

Precaution of Use: This product contains Sodium azide: a POISONOUS AND HAZARDOUS SUBSTANCE which should be handled by trained staff only.

Storage: -20 °C

Storage Comment: Store at -20°C. Avoid freeze / thaw cycles.



Western Blotting

Image 1. Western blot analysis of extracts of various cell lines, using TSC2 antibody (ABIN7271027) at 1:1000 dilution. Secondary antibody: HRP Goat Anti-Rabbit IgG (H+L) (ABIN1684268 and ABIN3020597) at 1:10000 dilution. Lysates/proteins: 25 µg per lane. Blocking buffer: 3 % nonfat dry milk in TBST. Detection: ECL Basic Kit (RM00020). Exposure time: 90s.

Immunoprecipitation

Image 2. Immunoprecipitation analysis of 300 µg extracts of 293T cells using 3 µg TSC2 antibody (ABIN7271027). Western blot was performed from the immunoprecipitate using TSC2 antibody (ABIN7271027) at a dilution of 1:1000.