

Datasheet for ABIN7271033  
**anti-TUBA1B antibody (AA 1-451)**



[Go to Product page](#)

6 Images

Overview

Quantity:	100 µL
Target:	TUBA1B
Binding Specificity:	AA 1-451
Reactivity:	Human
Host:	Rabbit
Clonality:	Polyclonal
Conjugate:	This TUBA1B antibody is un-conjugated
Application:	Western Blotting (WB), Immunofluorescence (IF), Immunohistochemistry (IHC)

Product Details

Purpose:	Alpha-tubulin (ubiquitous) chain Rabbit pAb
Immunogen:	Recombinant fusion protein containing a sequence corresponding to amino acids 1-451 of human Alpha-tubulin (ubiquitous) chain (NP_006073.2).
Sequence:	MRECISIHVG QAGVQIGNAC WELYCLEHGI QPDGQMPSDK TIGGGDDSN TFFSETGAGK HVPRAVFVDL EPTVIDEVRT GTYRQLFHPE QLITGKEDAA NNYARGHYTI GKEIDLVLVD RIRKLADQCT GLQGFLVFHS FGGGTGSGFT SLLMERLSVD YGKKSLEFS IYPAPQVSTA VVEPYNSILT THTTLEHSDC AFMVDNEAIY DICRRNLIE RPTYTNLNL ISQIVSSITA SLRFDGALNV DLTEFQTNLV PYPRIHFPLA TYAPVISA EK AYHEQLSVAE ITNACFEPAN QMKVCDPRHG KYMACCLLYR GDVVPKDVNA AIATIKTKRS IQFVDWCPTG FKVGINYQPP TVVPGGDLAK VQRAVCMLSN TTAIAEAWAR LDHKFDLMYA KRAVHWYVVG EGMEEGEFSE AREDMAALEK DYEEVGVDVSV EGEHEEEGEE Y

## Product Details

---

Isotype:	IgG
Cross-Reactivity:	Human, Mouse, Rat
Characteristics:	Loading control Antibodies
Purification:	Affinity purification

## Target Details

---

Target:	TUBA1B
Alternative Name:	TUBA1B ( <a href="#">TUBA1B Products</a> )
Background:	Tubulin is the major constituent of microtubules. It binds two moles of GTP, one at an exchangeable site on the beta chain and one at a non-exchangeable site on the alpha chain.,TUBA1B,K-ALPHA-1,Signal Transduction,Cell Biology & Developmental Biology,Cell Cycle,Centrosome,Cytoskeleton,Microtubules,TUBA1B
Molecular Weight:	37kDa/50kDa
Gene ID:	10376
UniProt:	<a href="#">P68363</a>
Pathways:	<a href="#">Microtubule Dynamics, M Phase</a>

## Application Details

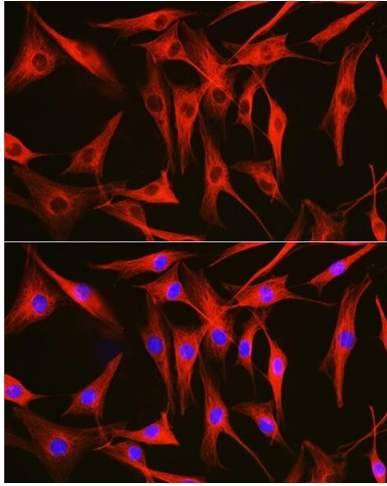
---

Application Notes:	WB,1:500 - 1:2000,IHC,1:50 - 1:200,IF,1:50 - 1:200
Restrictions:	For Research Use only

## Handling

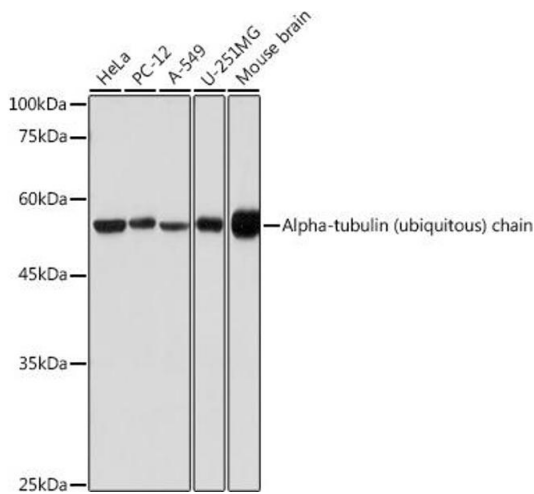
---

Format:	Liquid
Buffer:	PBS with 0.02 % sodium azide,50 % glycerol, pH 7.3.
Preservative:	Sodium azide
Precaution of Use:	This product contains Sodium azide: a POISONOUS AND HAZARDOUS SUBSTANCE which should be handled by trained staff only.
Storage:	-20 °C
Storage Comment:	Store at -20°C. Avoid freeze / thaw cycles.



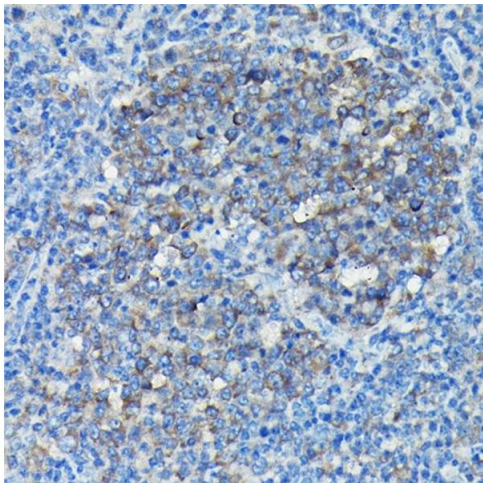
### Immunofluorescence

**Image 1.** Immunofluorescence analysis of NIH/3T3 cells using Alpha-tubulin (ubiquitous) chain antibody (ABIN7271033) at dilution of 1:100. Blue: DAPI for nuclear staining.



### Western Blotting

**Image 2.** Western blot analysis of extracts of various cell lines, using Alpha-tubulin (ubiquitous) chain antibody (ABIN7271033) at 1:500 dilution. Secondary antibody: HRP Goat Anti-Rabbit IgG (H+L) (ABIN1684268 and ABIN3020597) at 1:10000 dilution. Lysates/proteins: 25 µg per lane. Blocking buffer: 3% nonfat dry milk in TBST. Detection: ECL Basic Kit (RM00020). Exposure time: 1s.



### Immunohistochemistry

**Image 3.** Immunohistochemistry of paraffin-embedded Mouse spleen using Alpha-tubulin (ubiquitous) chain antibody (ABIN7271033) at dilution of 1:50 (40x lens). Perform high pressure antigen retrieval with 10 mM citrate buffer pH 6.0 before commencing with IHC staining protocol.

Please check the [product details page](#) for more images. Overall 6 images are available for ABIN7271033.