

Datasheet for ABIN7271045

anti-TUBB1 antibody

4 Images

[Go to Product page](#)

Overview

Quantity:	100 µL
Target:	TUBB1
Reactivity:	Human
Host:	Rabbit
Clonality:	Monoclonal
Conjugate:	This TUBB1 antibody is un-conjugated
Application:	Western Blotting (WB), Immunofluorescence (IF)

Product Details

Purpose:	Tubulin beta-1 chain Rabbit mAb
Immunogen:	A synthesized peptide derived from human Tubulin beta-1 chain
Isotype:	IgG
Cross-Reactivity:	Cow, Dog, Human, Monkey, Mouse, Rat
Characteristics:	Monoclonal Antibodies
Purification:	Affinity purification

Target Details

Target:	TUBB1
Alternative Name:	TUBB1 (TUBB1 Products)
Background:	This gene encodes a member of the beta tubulin protein family. Beta tubulins are one of two

Target Details

core protein families (alpha and beta tubulins) that heterodimerize and assemble to form microtubules. This protein is specifically expressed in platelets and megakaryocytes and may be involved in proplatelet production and platelet release. A mutations in this gene is associated with autosomal dominant macrothrombocytopenia. Two pseudogenes of this gene are found on chromosome Y.[provided by RefSeq, Jul 2010],Cell Biology & Developmental Biology,Cell Cycle,Cell Cycle_Centrosome,Cytoskeleton,Cytoskeleton_Microtubules,Signal Transduction,TUBB1

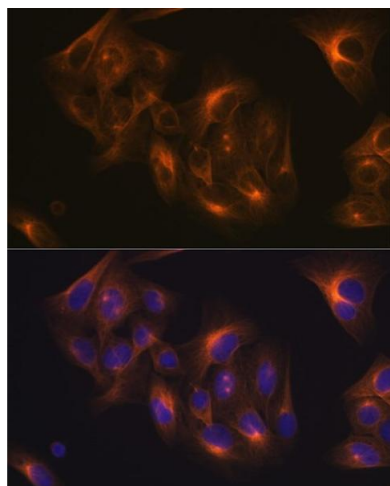
Molecular Weight:	50kDa
Gene ID:	81027
UniProt:	Q9H4B7
Pathways:	Microtubule Dynamics

Application Details

Application Notes:	WB,1:500 - 1:2000,IF,1:50 - 1:200
Restrictions:	For Research Use only

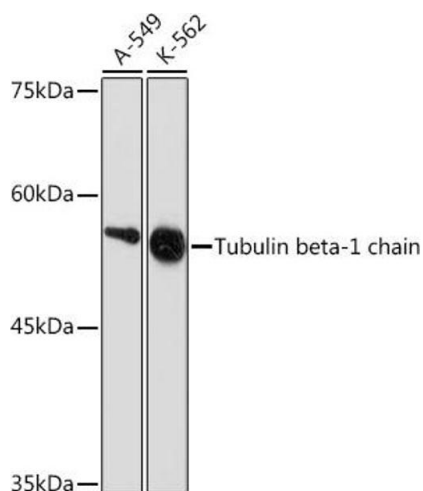
Handling

Format:	Liquid
Buffer:	PBS with 0.02 % sodium azide,0.05 % BSA,50 % glycerol, pH 7.3.
Preservative:	Sodium azide
Precaution of Use:	This product contains Sodium azide: a POISONOUS AND HAZARDOUS SUBSTANCE which should be handled by trained staff only.
Storage:	-20 °C
Storage Comment:	Store at -20°C. Avoid freeze / thaw cycles.



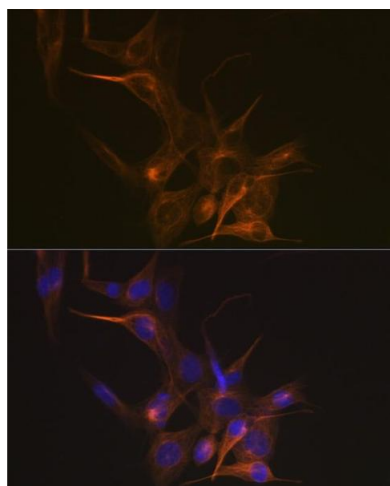
Immunofluorescence

Image 1. Immunofluorescence analysis of U-2 OS cells using Tubulin beta-1 chain Rabbit mAb (ABIN7271045) at dilution of 1:100 (40x lens). Blue: DAPI for nuclear staining.



Western Blotting

Image 2. Western blot analysis of extracts of various cell lines, using Tubulin beta-1 chain Rabbit mAb (ABIN7271045) at 1:1000 dilution. Secondary antibody: HRP Goat Anti-Rabbit IgG (H+L) (ABIN1684268 and ABIN3020597) at 1:10000 dilution. Lysates/proteins: 25 µg per lane. Blocking buffer: 3 % nonfat dry milk in TBST. Detection: ECL Basic Kit (RM00020). Exposure time: 90s.



Immunofluorescence

Image 3. Immunofluorescence analysis of NIH-3T3 cells using Tubulin beta-1 chain Rabbit mAb (ABIN7271045) at dilution of 1:100 (40x lens). Blue: DAPI for nuclear staining.

Please check the [product details page](#) for more images. Overall 4 images are available for ABIN7271045.