

Datasheet for ABIN7271046  
**anti-TUBB1 antibody (AA 362-451)**



[Go to Product page](#)

1 Image

## Overview

Quantity:	100 µL
Target:	TUBB1
Binding Specificity:	AA 362-451
Reactivity:	Human
Host:	Rabbit
Clonality:	Polyclonal
Conjugate:	This TUBB1 antibody is un-conjugated
Application:	Western Blotting (WB)

## Product Details

Purpose:	Tubulin beta-1 chain Rabbit pAb
Immunogen:	Recombinant fusion protein containing a sequence corresponding to amino acids 362-451 of human Tubulin beta-1 chain (NP_110400.1).
Sequence:	SMAATFIGNN TAIQEIFNRV SEHFSAMFKR KAFVHWYTSE GMDINEFGEA ENNIHDLVSE YQQFQDAKAV LEEDEEVTEE AEMEPEDKGH
Isotype:	IgG
Cross-Reactivity:	Mouse
Characteristics:	Polyclonal Antibodies
Purification:	Affinity purification

### Target Details

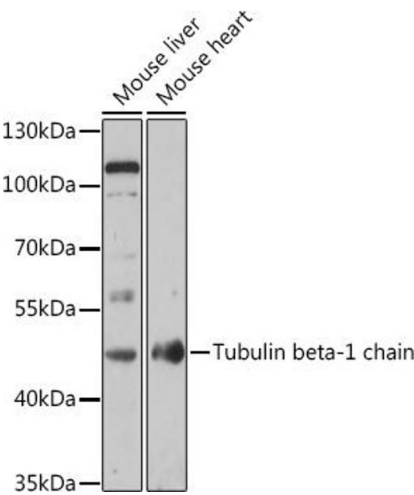
Target:	TUBB1
Alternative Name:	TUBB1 ( <a href="#">TUBB1 Products</a> )
Background:	This gene encodes a member of the beta tubulin protein family. Beta tubulins are one of two core protein families (alpha and beta tubulins) that heterodimerize and assemble to form microtubules. This protein is specifically expressed in platelets and megakaryocytes and may be involved in proplatelet production and platelet release. A mutations in this gene is associated with autosomal dominant macrothrombocytopenia. Two pseudogenes of this gene are found on chromosome Y.[provided by RefSeq, Jul 2010],TUBB1,Signal Transduction,Cell Biology & Developmental Biology,Cell Cycle,Centrosome,Cytoskeleton,Microtubules,TUBB1
Gene ID:	81027
UniProt:	<a href="#">Q9H4B7</a>
Pathways:	<a href="#">Microtubule Dynamics</a>

### Application Details

Application Notes:	WB,1:500 - 1:2000
Restrictions:	For Research Use only

### Handling

Format:	Liquid
Buffer:	PBS with 0.02 % sodium azide,50 % glycerol, pH 7.3.
Preservative:	Sodium azide
Precaution of Use:	This product contains Sodium azide: a POISONOUS AND HAZARDOUS SUBSTANCE which should be handled by trained staff only.
Storage:	-20 °C
Storage Comment:	Store at -20°C. Avoid freeze / thaw cycles.



Western Blotting

**Image 1.** Western blot analysis of extracts of various cell lines, using Tubulin beta-1 chain antibody (ABIN7271046) at 1:1000 dilution. Secondary antibody: HRP Goat Anti-Rabbit IgG (H+L) (ABIN1684268 and ABIN3020597) at 1:10000 dilution. Lysates/proteins: 25 µg per lane. Blocking buffer: 3 % nonfat dry milk in TBST. Detection: ECL Basic Kit (RM00020). Exposure time: 180s.