

Datasheet for ABIN7271047

anti-TUBB3 antibody

3 Images



[Go to Product page](#)

Overview

Quantity:	100 µL
Target:	TUBB3
Reactivity:	Human
Host:	Mouse
Clonality:	Monoclonal
Conjugate:	This TUBB3 antibody is un-conjugated
Application:	Western Blotting (WB), Immunohistochemistry (IHC), Immunofluorescence (IF)

Product Details

Purpose:	[KO Validated] β III-Tubulin Mouse mAb
Immunogen:	Recombinant protein of human TUBB3.
Isotype:	IgG
Cross-Reactivity:	Human, Mouse, Rat
Characteristics:	Monoclonal Antibodies
Purification:	Affinity purification
Grade:	KO Validated

Target Details

Target:	TUBB3
Alternative Name:	TUBB3 (TUBB3 Products)

Target Details

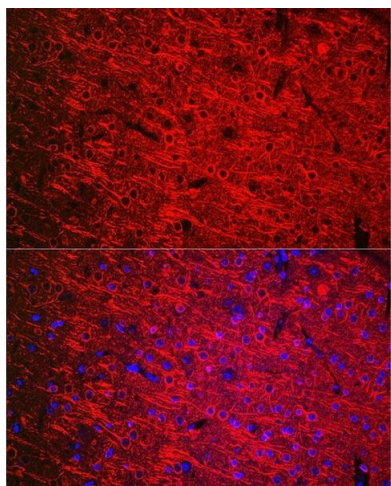
Background:	This gene encodes a class III member of the beta tubulin protein family. Beta tubulins are one of two core protein families (alpha and beta tubulins) that heterodimerize and assemble to form microtubules. This protein is primarily expressed in neurons and may be involved in neurogenesis and axon guidance and maintenance. Mutations in this gene are the cause of congenital fibrosis of the extraocular muscles type 3. Alternate splicing results in multiple transcript variants. A pseudogene of this gene is found on chromosome 6.,CDCBM,CDCBM1,CFEOM3,CFEOM3A,FEOM3,TUBB4,beta-4,beta Tubulin III,TUBB3,Signal Transduction,Cell Biology & Developmental Biology,Cell Cycle,Centrosome,Cytoskeleton,Microtubules,Neuroscience,Cell Type Marker,Neuron marker,TUBB3
Molecular Weight:	42kDa/50kDa
Gene ID:	10381
UniProt:	Q13509
Pathways:	Microtubule Dynamics, M Phase

Application Details

Application Notes:	WB,1:500 - 1:2000,IHC,1:50 - 1:200,IF,1:50 - 1:200
Restrictions:	For Research Use only

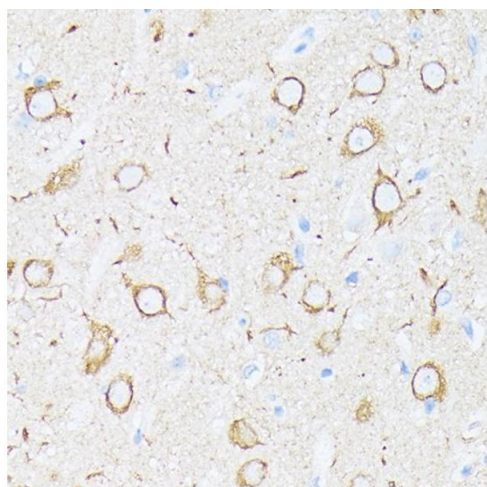
Handling

Format:	Liquid
Buffer:	PBS with 0.02 % sodium azide,50 % glycerol, pH 7.3.
Preservative:	Sodium azide
Precaution of Use:	This product contains Sodium azide: a POISONOUS AND HAZARDOUS SUBSTANCE which should be handled by trained staff only.
Storage:	-20 °C
Storage Comment:	Store at -20°C. Avoid freeze / thaw cycles.



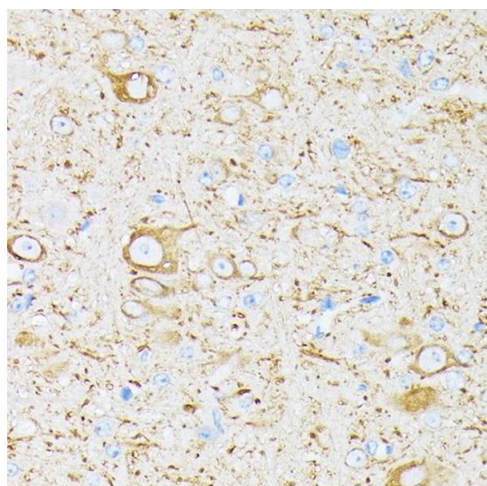
Immunofluorescence

Image 1. Immunofluorescence analysis of mouse brain cells using [KO Validated] β III-Tubulin Mouse mAb at dilution of 1:200 (40x lens). Blue: DAPI for nuclear staining.



Immunohistochemistry

Image 2. Immunohistochemistry of paraffin-embedded rat brain using β III-Tubulin/ β 3-Tubulin at dilution of 100 (40x lens). Perform microwave antigen retrieval with 10 mM PBS buffer pH 7.2 before commencing with IHC staining protocol.



Immunohistochemistry

Image 3. Immunohistochemistry of paraffin-embedded mouse brain using β III-Tubulin/ β 3-Tubulin at dilution of 100 (40x lens). Perform microwave antigen retrieval with 10 mM PBS buffer pH 7.2 before commencing with IHC staining protocol.