

Datasheet for ABIN7271051

anti-TUBG1 antibody**2** Images[Go to Product page](#)

Overview

Quantity:	100 µL
Target:	TUBG1
Reactivity:	Human
Host:	Rabbit
Clonality:	Monoclonal
Conjugate:	This TUBG1 antibody is un-conjugated
Application:	Western Blotting (WB), Immunoprecipitation (IP)

Product Details

Purpose:	γ-Tubulin Rabbit mAb
Immunogen:	Recombinant protein of human gamma-Tubulin .
Isotype:	IgG
Cross-Reactivity:	Human, Mouse, Rat
Characteristics:	Monoclonal Antibodies
Purification:	Affinity purification

Target Details

Target:	TUBG1
Alternative Name:	TUBG1 (TUBG1 Products)
Background:	This gene encodes a member of the tubulin superfamily. The encoded protein localizes to the

Target Details

centrosome where it binds to microtubules as part of a complex referred to as the gamma-tubulin ring complex. The protein mediates microtubule nucleation and is required for microtubule formation and progression of the cell cycle. A pseudogene of this gene is found on chromosome 7. [provided by RefSeq, Jan 2009],CDCBM4, GCP-1, TUBG, TUBGCP1,Apoptosis,Cell Biology & Developmental Biology,Cell Cycle,Cell Cycle_Centrosome,TUBG1

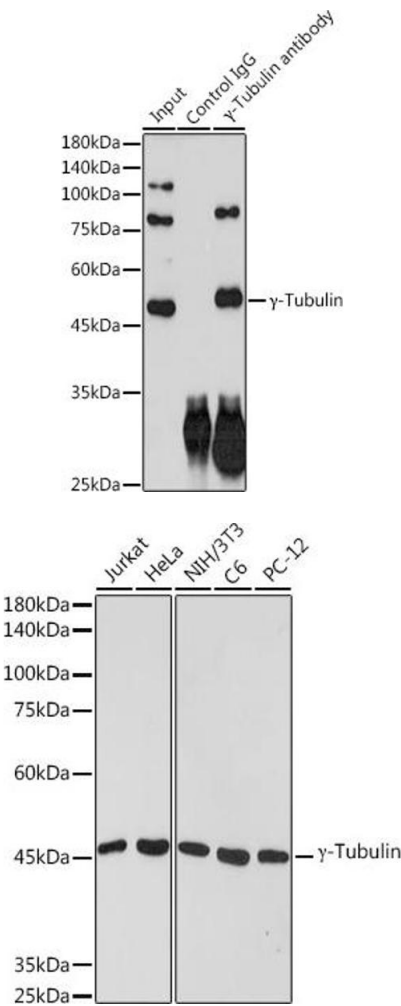
Molecular Weight:	48kDa
Gene ID:	7283
UniProt:	P23258
Pathways:	Microtubule Dynamics , M Phase

Application Details

Application Notes:	WB,1:500 - 1:2000,IP,1:50 - 1:200
Restrictions:	For Research Use only

Handling

Format:	Liquid
Buffer:	PBS with 0.02 % Thimerosal, pH 7.3.
Preservative:	Thimerosal (Merthiolate)
Precaution of Use:	This product contains Thimerosal (Merthiolate): a POISONOUS AND HAZARDOUS SUBSTANCE which should be handled by trained staff only.
Storage:	4 °C
Storage Comment:	Store at 4°C. Avoid freeze / thaw cycles.



Immunoprecipitation

Image 1. Immunoprecipitation analysis of 300 µg extracts of HeLa cells using 3 µg γ-Tubulin antibody (ABIN7271051). Western blot was performed from the immunoprecipitate using γ-Tubulin antibody (ABIN7271051) at a dilution of 1:1000.

Western Blotting

Image 2. Western blot analysis of extracts of various cell lines, using γ-Tubulin antibody (ABIN7271051) at 1:1000 dilution. Secondary antibody: HRP Goat Anti-Rabbit IgG (H+L) (ABIN1684268 and ABIN3020597) at 1:10000 dilution. Lysates/proteins: 25 µg per lane. Blocking buffer: 3 % nonfat dry milk in TBST. Detection: ECL Basic Kit (RM00020). Exposure time: 60s.