

Datasheet for ABIN7271073
anti-CD137 antibody (AA 150-250)[Go to Product page](#)

4 Images

Overview

Quantity:	100 µL
Target:	CD137 (TNFRSF9)
Binding Specificity:	AA 150-250
Reactivity:	Human
Host:	Rabbit
Clonality:	Polyclonal
Conjugate:	This CD137 antibody is un-conjugated
Application:	Western Blotting (WB), Immunohistochemistry (IHC)

Product Details

Purpose:	4-1BB/CD137 Rabbit pAb
Immunogen:	A synthetic peptide corresponding to a sequence within amino acids 150-250 of human 4-1BB/CD137 (NP_001552.2).
Sequence:	GTKERDVVCG PSPADLSPGA SSVTPPAPAR EPGHSPQIIS FFLALTSTAL LFLFFLTLR FSVVKRGRKK LLYIFKQPFM RPVQTTQEED GCSCRFPEEE E
Isotype:	IgG
Cross-Reactivity:	Human, Mouse, Rat
Characteristics:	Polyclonal Antibodies
Purification:	Affinity purification

Target Details

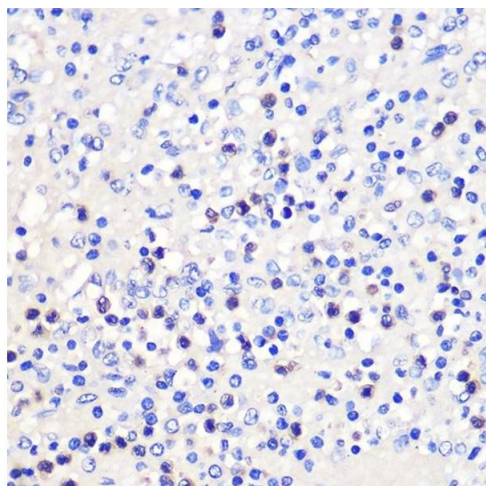
Target:	CD137 (TNFRSF9)
Alternative Name:	TNFRSF9 (TNFRSF9 Products)
Background:	<p>The protein encoded by this gene is a member of the TNF-receptor superfamily. This receptor contributes to the clonal expansion, survival, and development of T cells. It can also induce proliferation in peripheral monocytes, enhance T cell apoptosis induced by TCR/CD3 triggered activation, and regulate CD28 co-stimulation to promote Th1 cell responses. The expression of this receptor is induced by lymphocyte activation. TRAF adaptor proteins have been shown to bind to this receptor and transduce the signals leading to activation of NF-kappaB.,TNFRSF9,4-1BB,CD137,CDw137,ILA,Cancer,Tumor immunology,Cell Biology & Developmental Biology,Apoptosis,Immunology & Inflammation,CD markers,Cytokines,TNF,NF-kB Signaling Pathway,Cell Intrinsic Innate Immunity Signaling Pathway,Stem Cells,Hematopoietic Progenitors,TNFRSF9</p>
Molecular Weight:	27kDa
Gene ID:	3604
UniProt:	Q07011
Pathways:	Cancer Immune Checkpoints

Application Details

Application Notes:	WB,1:500 - 1:2000,IHC,1:50 - 1:200
Restrictions:	For Research Use only

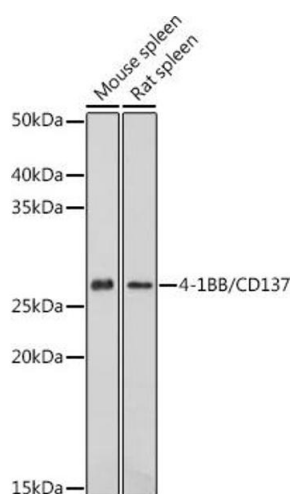
Handling

Format:	Liquid
Buffer:	PBS with 0.02 % sodium azide,50 % glycerol, pH 7.3.
Preservative:	Sodium azide
Precaution of Use:	This product contains Sodium azide: a POISONOUS AND HAZARDOUS SUBSTANCE which should be handled by trained staff only.
Storage:	-20 °C
Storage Comment:	Store at -20°C. Avoid freeze / thaw cycles.



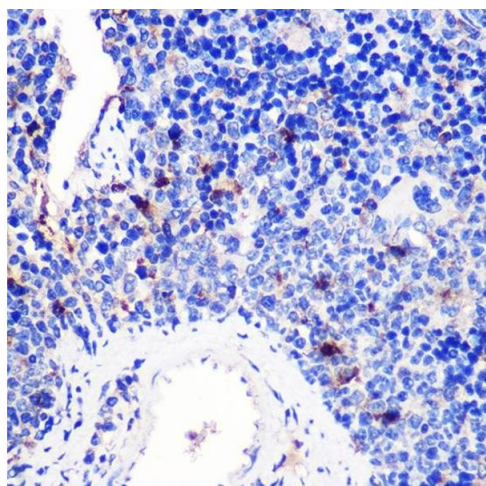
Immunohistochemistry

Image 1. Immunohistochemistry of paraffin-embedded Human spleen using 4-1BB/CD137 Rabbit pAb (ABIN7271073) at dilution of 1:100 (40x lens). Perform microwave antigen retrieval with 10 mM PBS buffer pH 7.2 before commencing with IHC staining protocol.



Western Blotting

Image 2. Western blot analysis of extracts of various cell lines, using 4-1BB/CD137 antibody (ABIN7271073) at 1:1000 dilution. Secondary antibody: HRP Goat Anti-Rabbit IgG (H+L) (ABIN1684268 and ABIN3020597) at 1:10000 dilution. Lysates/proteins: 25 µg per lane. Blocking buffer: 3 % nonfat dry milk in TBST. Detection: ECL Basic Kit (RM00020). Exposure time: 60s.



Immunohistochemistry

Image 3. Immunohistochemistry of paraffin-embedded Mouse spleen using 4-1BB/CD137 Rabbit pAb (ABIN7271073) at dilution of 1:100 (40x lens). Perform microwave antigen retrieval with 10 mM PBS buffer pH 7.2 before commencing with IHC staining protocol.

Please check the [product details page](#) for more images. Overall 4 images are available for ABIN7271073.