

Datasheet for ABIN7271098
anti-TP53I13 antibody (AA 180-310)



[Go to Product page](#)

2 Images

Overview

Quantity:	100 µL
Target:	TP53I13
Binding Specificity:	AA 180-310
Reactivity:	Human
Host:	Rabbit
Clonality:	Polyclonal
Conjugate:	This TP53I13 antibody is un-conjugated
Application:	Western Blotting (WB), Immunofluorescence (IF)

Product Details

Purpose:	TP53I13 Rabbit pAb
Immunogen:	Recombinant fusion protein containing a sequence corresponding to amino acids 180-310 of human TP53I13 (NP_612358.3).
Sequence:	RSWRPPGTEV TSQGPRQPSS SGAKRRRLRA ALGPQPTRSA LRFPSASPGS LKAKQSMAGI PGRESNAPSV PTVSLLPGAP GGNASSRTEA QVPNGQGSPG GCVCSSQASP APRAAAPRA ARGPTRTEE A
Isotype:	IgG
Cross-Reactivity:	Mouse, Rat
Characteristics:	Polyclonal Antibodies
Purification:	Affinity purification

Target Details

Target: TP53I13

Alternative Name: TP53I13 ([TP53I13 Products](#))

Background: May act as a tumor suppressor. Inhibits tumor cell growth, when overexpressed.,TP53I13,DSCP1,Cancer,Tumor suppressors,p53 pathway,Cell Biology & Developmental Biology,Cell Cycle,Cell cycle inhibitors,TP53I13

Molecular Weight: 42kDa

Gene ID: 90313

UniProt: [Q8NBR0](#)

Application Details

Application Notes: WB,1:500 - 1:2000,IF,1:50 - 1:200

Restrictions: For Research Use only

Handling

Format: Liquid

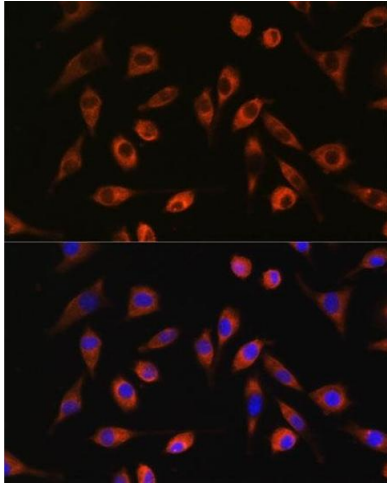
Buffer: PBS with 0.02 % sodium azide,50 % glycerol, pH 7.3.

Preservative: Sodium azide

Precaution of Use: This product contains Sodium azide: a POISONOUS AND HAZARDOUS SUBSTANCE which should be handled by trained staff only.

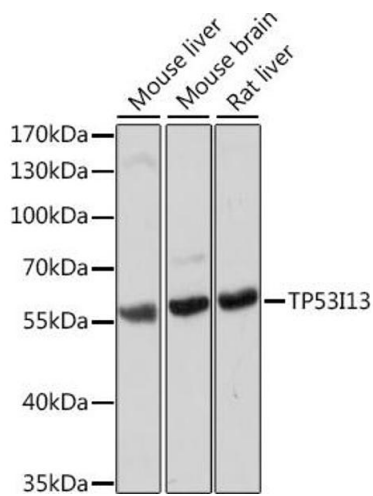
Storage: -20 °C

Storage Comment: Store at -20°C. Avoid freeze / thaw cycles.



Immunofluorescence

Image 1. Immunofluorescence analysis of L929 cells using TP53I13 antibody (ABIN7271098) at dilution of 1:100. Blue: DAPI for nuclear staining.



Western Blotting

Image 2. Western blot analysis of extracts of various cell lines, using TP53I13 antibody (ABIN7271098) at 1:1000 dilution. Secondary antibody: HRP Goat Anti-Rabbit IgG (H+L) (ABIN1684268 and ABIN3020597) at 1:10000 dilution. Lysates/proteins: 25 µg per lane. Blocking buffer: 3 % nonfat dry milk in TBST. Detection: ECL Basic Kit (RM00020). Exposure time: 10s.