



## Datasheet for ABIN7271100 **anti-TPRG1L antibody (AA 1-90)**



[Go to Product page](#)

### 1 Image

#### Overview

Quantity:	100 µL
Target:	TPRG1L
Binding Specificity:	AA 1-90
Reactivity:	Human
Host:	Rabbit
Clonality:	Polyclonal
Conjugate:	This TPRG1L antibody is un-conjugated
Application:	Western Blotting (WB)

#### Product Details

Purpose:	TPRG1L Rabbit pAb
Immunogen:	Recombinant fusion protein containing a sequence corresponding to amino acids 1-90 of human TPRG1L (NP_877429.2).
Sequence:	MLQLRDSVDS AGTSPTAVLA AGEEVGAGGG PGGGRPGAGT PLRQTLWPLS IHDPTRRARV KEYFVFRPGS IEQAVEEIRV VVRPVEDGEI
Isotype:	IgG
Cross-Reactivity:	Mouse, Rat
Characteristics:	Polyclonal Antibodies
Purification:	Affinity purification

## Target Details

---

Target:	TPRG1L
Alternative Name:	TPRG1L ( <a href="#">TPRG1L Products</a> )
Background:	Presynaptic protein involved in the synaptic transmission tuning. Regulates synaptic release probability by decreasing the calcium sensitivity of release.,TPRG1L,FAM79A,h-mover,mover,Neuroscience,TPRG1L
Molecular Weight:	23kDa/30kDa
Gene ID:	127262
UniProt:	<a href="#">Q5T0D9</a>

## Application Details

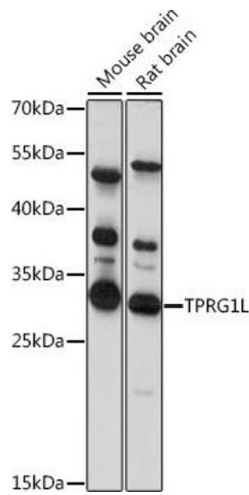
---

Application Notes:	WB,1:500 - 1:2000
Restrictions:	For Research Use only

## Handling

---

Format:	Liquid
Buffer:	PBS with 0.02 % sodium azide,50 % glycerol, pH 7.3.
Preservative:	Sodium azide
Precaution of Use:	This product contains Sodium azide: a POISONOUS AND HAZARDOUS SUBSTANCE which should be handled by trained staff only.
Storage:	-20 °C
Storage Comment:	Store at -20°C. Avoid freeze / thaw cycles.



### Western Blotting

**Image 1.** Western blot analysis of extracts of various cell lines, using TPRG1L antibody (ABIN7271100) at 1:1000 dilution. Secondary antibody: HRP Goat Anti-Rabbit IgG (H+L) (ABIN1684268 and ABIN3020597) at 1:10000 dilution. Lysates/proteins: 25 µg per lane. Blocking buffer: 3 % nonfat dry milk in TBST. Detection: ECL Basic Kit (RM00020). Exposure time: 20s.