

Datasheet for ABIN7271173

anti-UBE2B antibody

5 Images

[Go to Product page](#)

Overview

Quantity:	100 µL
Target:	UBE2B
Reactivity:	Human
Host:	Rabbit
Clonality:	Monoclonal
Conjugate:	This UBE2B antibody is un-conjugated
Application:	Western Blotting (WB), Immunohistochemistry (IHC)

Product Details

Purpose:	UBE2B Rabbit mAb
Immunogen:	A synthesized peptide derived from human UBE2B.
Isotype:	IgG
Cross-Reactivity:	Human, Mouse, Rat
Characteristics:	Monoclonal Antibodies
Purification:	Affinity purification

Target Details

Target:	UBE2B
Alternative Name:	UBE2B (UBE2B Products)
Target Type:	Viral Protein

Target Details

Background: The modification of proteins with ubiquitin is an important cellular mechanism for targeting abnormal or short-lived proteins for degradation. Ubiquitination involves at least three classes of enzymes: ubiquitin-activating enzymes, or E1s, ubiquitin-conjugating enzymes, or E2s, and ubiquitin-protein ligases, or E3s. This gene encodes a member of the E2 ubiquitin-conjugating enzyme family. This enzyme is required for post-replicative DNA damage repair. Its protein sequence is 100 % identical to the mouse, rat, and rabbit homologs, which indicates that this enzyme is highly conserved in eukaryotic evolution. UBE2B, E2-17 kDa, HHR6B, HR6B, RAD6B, UBC2, ubiquitin-conjugating enzyme E2 B, Epigenetics & Nuclear Signaling, Chromatin Modifying Enzymes, Ubiquitination, DNA Damage & Repair, Cancer, Cell Biology & Developmental Biology, Ubiquitin, Ubiquitin-Proteasome Signaling Pathway, Endocrine & Metabolism, Nucleotide metabolism, Purine and pyrimidine synthesis, UBE2B

Molecular Weight: 17kDa

Gene ID: 7320

UniProt: [P63146](#)

Application Details

Application Notes: WB, 1:500 - 1:2000, IHC, 1:50 - 1:200

Restrictions: For Research Use only

Handling

Format: Liquid

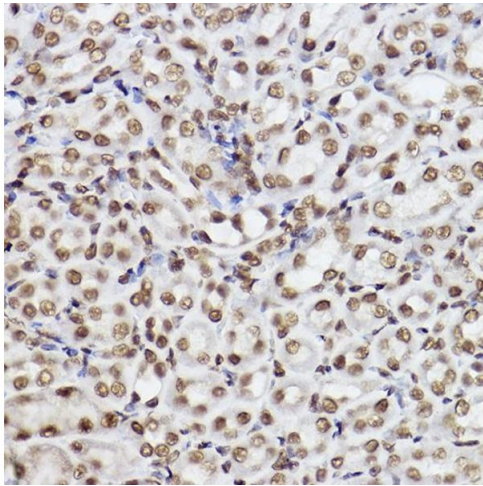
Buffer: PBS with 0.02 % sodium azide, 0.05 % BSA, 50 % glycerol, pH 7.3.

Preservative: Sodium azide

Precaution of Use: This product contains Sodium azide: a POISONOUS AND HAZARDOUS SUBSTANCE which should be handled by trained staff only.

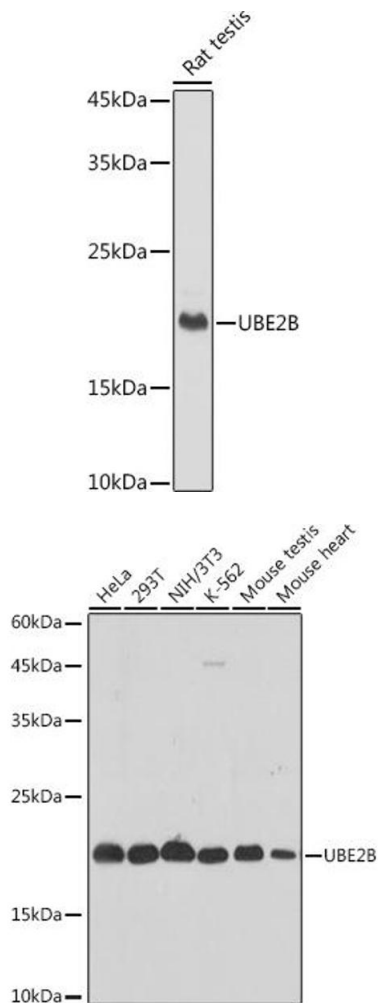
Storage: -20 °C

Storage Comment: Store at -20°C. Avoid freeze / thaw cycles.



Immunohistochemistry

Image 1. Immunohistochemistry of paraffin-embedded mouse kidney using UBE2B Rabbit mAb (ABIN7271173) at dilution of 1:100 (40x lens). Perform high pressure antigen retrieval with 10 mM citrate buffer pH 6.0 before commencing with IHC staining protocol.



Western Blotting

Image 2. Western blot analysis of extracts of Rat testis, using UBE2B antibody (ABIN7271173) at 1:1000 dilution. Secondary antibody: HRP Goat Anti-Rabbit IgG (H+L) (ABIN1684268 and ABIN3020597) at 1:10000 dilution. Lysates/proteins: 25 µg per lane. Blocking buffer: 3 % nonfat dry milk in TBST. Detection: ECL Basic Kit (RM00020). Exposure time: 1s.

Western Blotting

Image 3. Western blot analysis of extracts of various cell lines, using UBE2B antibody (ABIN7271173) at 1:1000 dilution. Secondary antibody: HRP Goat Anti-Rabbit IgG (H+L) (ABIN1684268 and ABIN3020597) at 1:10000 dilution. Lysates/proteins: 25 µg per lane. Blocking buffer: 3 % nonfat dry milk in TBST. Detection: ECL Basic Kit (RM00020). Exposure time: 3s.

Please check the [product details page](#) for more images. Overall 5 images are available for ABIN7271173.