

Datasheet for ABIN7271179  
**anti-UBE2N antibody**



[Go to Product page](#)

4 Images

### Overview

Quantity:	100 µL
Target:	UBE2N
Reactivity:	Human
Host:	Rabbit
Clonality:	Monoclonal
Conjugate:	This UBE2N antibody is un-conjugated
Application:	Western Blotting (WB), Immunohistochemistry (IHC), Immunofluorescence (IF)

### Product Details

Purpose:	Ube2N/Ubc13 Rabbit mAb
Immunogen:	A synthesized peptide derived from human Ube2N/Ubc13
Isotype:	IgG
Cross-Reactivity:	Human, Mouse, Rat
Characteristics:	Monoclonal Antibodies
Purification:	Affinity purification

### Target Details

Target:	UBE2N
Alternative Name:	UBE2N ( <a href="#">UBE2N Products</a> )
Background:	The modification of proteins with ubiquitin is an important cellular mechanism for targeting

## Target Details

---

abnormal or short-lived proteins for degradation. Ubiquitination involves at least three classes of enzymes: ubiquitin-activating enzymes, or E1s, ubiquitin-conjugating enzymes, or E2s, and ubiquitin-protein ligases, or E3s. This gene encodes a member of the E2 ubiquitin-conjugating enzyme family. Studies in mouse suggest that this protein plays a role in DNA postreplication repair. [provided by RefSeq, Jul 2008],HEL-S-71, UBC13, UBCHBEN, UBC13, UbcH-ben, UbcH13,Cell Biology & Developmental Biology,Cell Intrinsic Innate Immunity Signaling Pathway,DNA Damage & Repair,Epigenetics & Nuclear Signaling,Immunology & Inflammation,Innate Immunity\_TLR Signaling,NF-kB Signaling Pathway,Toll-like Receptor Signaling Pathway,Ubiquitin,Ubiquitin\_Ubiquitin-Proteasome Signaling Pathway,UBE2N

---

Molecular Weight: 17kDa

---

Gene ID: 7334

---

UniProt: [P61088](#)

---

Pathways: [TCR Signaling](#), [Fc-epsilon Receptor Signaling Pathway](#), [Activation of Innate immune Response](#), [Toll-Like Receptors Cascades](#), [Positive Regulation of Response to DNA Damage Stimulus](#), [Ubiquitin Proteasome Pathway](#)

## Application Details

---

Application Notes: WB,1:500 - 1:2000,IHC,1:50 - 1:200,IF,1:50 - 1:200

---

Restrictions: For Research Use only

## Handling

---

Format: Liquid

---

Buffer: PBS with 0.02 % sodium azide,0.05 % BSA,50 % glycerol, pH 7.3.

---

Preservative: Sodium azide

---

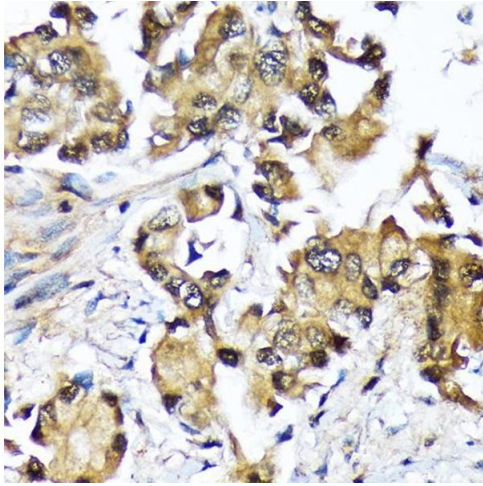
Precaution of Use: This product contains Sodium azide: a POISONOUS AND HAZARDOUS SUBSTANCE which should be handled by trained staff only.

---

Storage: -20 °C

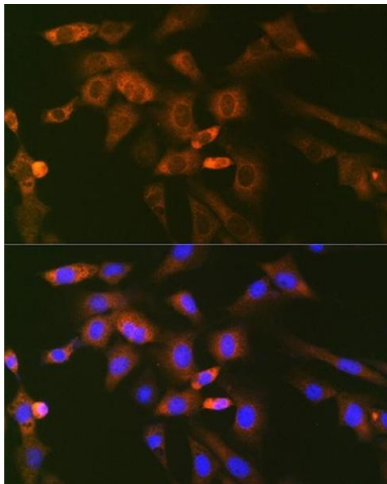
---

Storage Comment: Store at -20°C. Avoid freeze / thaw cycles.



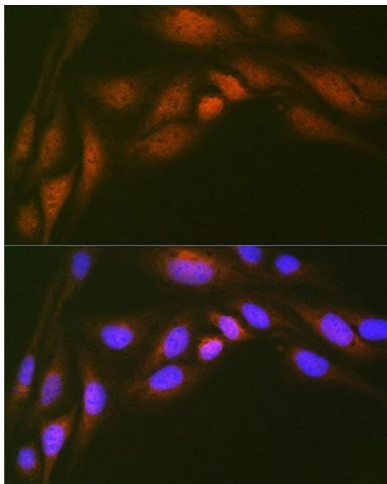
### Immunohistochemistry

**Image 1.** Immunohistochemistry of paraffin-embedded human lung cancer using Ube2N/Ubc13 Rabbit mAb (ABIN7271179) at dilution of 1:100 (40x lens). Perform microwave antigen retrieval with 10 mM Tris/EDTA buffer pH 9.0 before commencing with IHC staining protocol.



### Immunofluorescence

**Image 2.** Immunofluorescence analysis of NIH-3T3 cells using Ube2N/Ubc13 Rabbit mAb (ABIN7271179) at dilution of 1:100 (40x lens). Blue: DAPI for nuclear staining.



### Immunofluorescence

**Image 3.** Immunofluorescence analysis of U-2 OS cells using Ube2N/Ubc13 Rabbit mAb (ABIN7271179) at dilution of 1:100 (40x lens). Blue: DAPI for nuclear staining.

Please check the [product details page](#) for more images. Overall 4 images are available for ABIN7271179.