



[Go to Product page](#)

Datasheet for ABIN7271182  
**anti-UBE2W antibody (AA 40-110)**

1 Image

Overview

Quantity:	100 µL
Target:	UBE2W
Binding Specificity:	AA 40-110
Reactivity:	Human
Host:	Rabbit
Clonality:	Polyclonal
Conjugate:	This UBE2W antibody is un-conjugated
Application:	Western Blotting (WB)

Product Details

Purpose:	UBE2W Rabbit pAb
Immunogen:	Recombinant fusion protein containing a sequence corresponding to amino acids 40-110 of human UBE2W (NP_001001481.2).
Sequence:	VEVWFPKRLQ KELLALQNDP PPGMTLNEKS VQNSITQWIV DMEGAPGTLY EGEKFQLLFK FSSRYPFDSP Q
Isotype:	IgG
Cross-Reactivity:	Human, Mouse
Characteristics:	Polyclonal Antibodies
Purification:	Affinity purification

## Target Details

---

Target:	UBE2W
Alternative Name:	UBE2W ( <a href="#">UBE2W Products</a> )
Background:	<p>This gene encodes a nuclear-localized ubiquitin-conjugating enzyme (E2) that, along with ubiquitin-activating (E1) and ligating (E3) enzymes, coordinates the addition of a ubiquitin moiety to existing proteins. The encoded protein promotes the ubiquitination of Fanconi anemia complementation group proteins and may be important in the repair of DNA damage. There is a pseudogene for this gene on chromosome 1. Alternative splicing results in multiple transcript variants.,UBE2W,UBC-16,UBC16,Epigenetics &amp; Nuclear Signaling,Cell Biology &amp; Developmental Biology,Ubiquitin,Ubiquitin-Proteasome Signaling Pathway,UBE2W</p>
Molecular Weight:	17kDa/18kDa/20kDa
Gene ID:	55284
UniProt:	<a href="#">Q96B02</a>

## Application Details

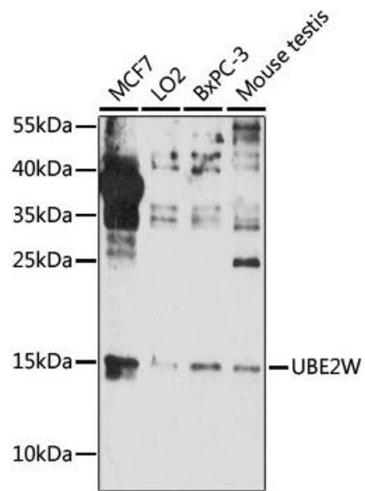
---

Application Notes:	WB,1:500 - 1:1000
Restrictions:	For Research Use only

## Handling

---

Format:	Liquid
Buffer:	PBS with 0.02 % sodium azide,50 % glycerol, pH 7.3.
Preservative:	Sodium azide
Precaution of Use:	This product contains Sodium azide: a POISONOUS AND HAZARDOUS SUBSTANCE which should be handled by trained staff only.
Storage:	-20 °C
Storage Comment:	Store at -20°C. Avoid freeze / thaw cycles.



### Western Blotting

**Image 1.** Western blot analysis of extracts of various cell lines, using UBE2W antibody (ABIN7271182) at 1:1000 dilution. Secondary antibody: HRP Goat Anti-Rabbit IgG (H+L) (ABIN1684268 and ABIN3020597) at 1:10000 dilution. Lysates/proteins: 25 µg per lane. Blocking buffer: 3 % nonfat dry milk in TBST. Detection: ECL Basic Kit (RM00020). Exposure time: 90s.