



[Go to Product page](#)

Datasheet for ABIN7271189  
**anti-UHRF1 antibody (meLys385)**

2 Images

Overview

Quantity:	100 µL
Target:	UHRF1
Binding Specificity:	meLys385
Reactivity:	Human
Host:	Rabbit
Clonality:	Polyclonal
Conjugate:	This UHRF1 antibody is un-conjugated
Application:	Western Blotting (WB), Immunohistochemistry (IHC), Dot Blot (DB)

Product Details

Purpose:	MonoMethyl-UHRF1-K385 Rabbit pAb
Immunogen:	A synthetic monomethylated peptide around K385 of human UHRF1 (NP_001041666.1).
Sequence:	KAKMA
Isotype:	IgG
Cross-Reactivity:	Human, Mouse, Rat
Characteristics:	Methylated Antibodies
Purification:	Affinity purification

Target Details

Target:	UHRF1
---------	-------

## Target Details

---

Alternative Name: [UHRF1 \(UHRF1 Products\)](#)

---

Background: This gene encodes a member of a subfamily of RING-finger type E3 ubiquitin ligases. The protein binds to specific DNA sequences, and recruits a histone deacetylase to regulate gene expression. Its expression peaks at late G1 phase and continues during G2 and M phases of the cell cycle. It plays a major role in the G1/S transition by regulating topoisomerase IIalpha and retinoblastoma gene expression, and functions in the p53-dependent DNA damage checkpoint. It is regarded as a hub protein for the integration of epigenetic information. This gene is up-regulated in various cancers, and it is therefore considered to be a therapeutic target. Multiple transcript variants encoding different isoforms have been found for this gene. A related pseudogene exists on chromosome 12.,UHRF1,ICBP90,Np95,RNF106,TDRD22,hNP95,hUHRF1,huNp95,Epigenetics & Nuclear Signaling,Cell Biology & Developmental Biology,Apoptosis,UHRF1

---

Molecular Weight: 89kDa/91kDa

---

Gene ID: 29128

---

UniProt: [Q96T88](#)

---

## Application Details

---

Application Notes: DB,1:500 - 1:2000,WB,1:500 - 1:2000,IHC,1:50 - 1:200

---

Restrictions: For Research Use only

---

## Handling

---

Format: Liquid

---

Buffer: PBS with 0.02 % sodium azide,50 % glycerol, pH 7.3.

---

Preservative: Sodium azide

---

Precaution of Use: This product contains Sodium azide: a POISONOUS AND HAZARDOUS SUBSTANCE which should be handled by trained staff only.

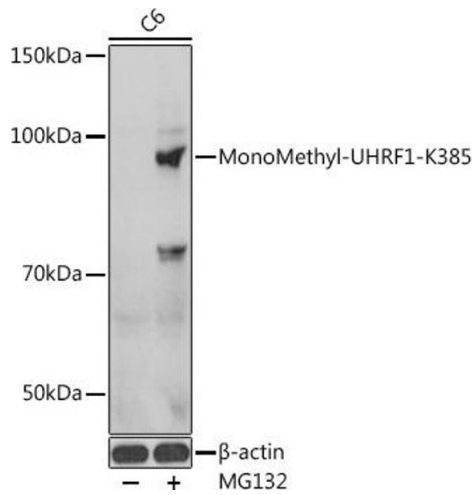
---

Storage: -20 °C

---

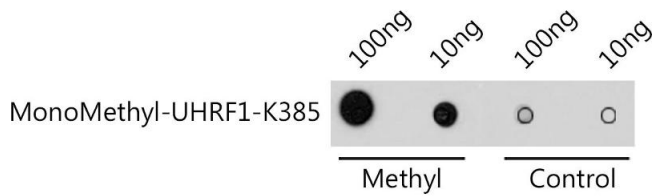
Storage Comment: Store at -20°C. Avoid freeze / thaw cycles.

---



### Western Blotting

**Image 1.** Western blot analysis of extracts of C6 cells, using MonoMethyl-UHRF1-K385 antibody at 1:1000 dilution. C6 cells were treated by MG132 (50  $\mu$ M) at 37  $^{\circ}$ C for 90 minutes. Secondary antibody: HRP Goat Anti-Rabbit IgG (H+L) (ABIN1684268 and ABIN3020597) at 1:10000 dilution. Lysates/proteins: 25  $\mu$ g per lane. Blocking buffer: 3 % BSA. Detection: ECL Basic Kit (RM00020). Exposure time: 1s.



### Dot Blot

**Image 2.** Dot-blot analysis of all sorts of methylation peptides using MonoMethyl-UHRF1-K385 antibody at 1:1000 dilution.