

Datasheet for ABIN7271226
anti-RENT1/UPF1 antibody

3 Images

[Go to Product page](#)

Overview

Quantity:	100 µL
Target:	RENT1/UPF1 (UPF1)
Reactivity:	Human
Host:	Rabbit
Clonality:	Monoclonal
Conjugate:	This RENT1/UPF1 antibody is un-conjugated
Application:	Western Blotting (WB), Immunofluorescence (IF), Immunoprecipitation (IP)

Product Details

Purpose:	UPF1/RENT1 Rabbit mAb
Immunogen:	A synthesized peptide derived from human UPF1/RENT1
Isotype:	IgG
Cross-Reactivity:	Human, Mouse, Rat
Characteristics:	Monoclonal Antibodies
Purification:	Affinity purification

Target Details

Target:	RENT1/UPF1 (UPF1)
Alternative Name:	UPF1 (UPF1 Products)
Background:	This gene encodes a protein that is part of a post-splicing multiprotein complex involved in both

Target Details

mRNA nuclear export and mRNA surveillance. mRNA surveillance detects exported mRNAs with truncated open reading frames and initiates nonsense-mediated mRNA decay (NMD). When translation ends upstream from the last exon-exon junction, this triggers NMD to degrade mRNAs containing premature stop codons. This protein is located only in the cytoplasm. When translation ends, it interacts with the protein that is a functional homolog of yeast Upf2p to trigger mRNA decapping. Use of multiple polyadenylation sites has been noted for this gene. Alternative splicing results in multiple transcript variants. [provided by RefSeq, Jul 2014],HUPF1, NORF1, RENT1, pNORF1, smg-2,Apoptosis,Cell Biology & Developmental Biology,Epigenetics & Nuclear Signaling,RNA Binding,UPF1

Molecular Weight: 130kDa

Gene ID: 5976

UniProt: [Q92900](#)

Pathways: [SARS-CoV-2 Protein Interactome](#)

Application Details

Application Notes: WB,1:500 - 1:2000,IF,1:50 - 1:200,IP,1:50 - 1:200

Restrictions: For Research Use only

Handling

Format: Liquid

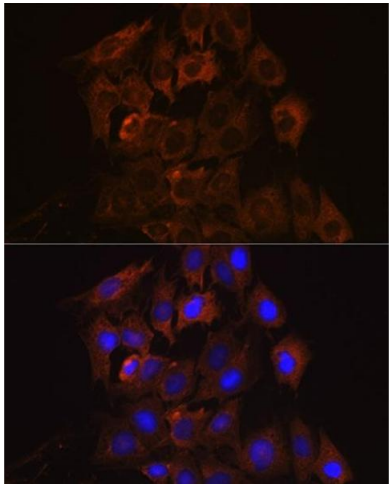
Buffer: PBS with 0.02 % sodium azide,0.05 % BSA,50 % glycerol, pH 7.3.

Preservative: Sodium azide

Precaution of Use: This product contains Sodium azide: a POISONOUS AND HAZARDOUS SUBSTANCE which should be handled by trained staff only.

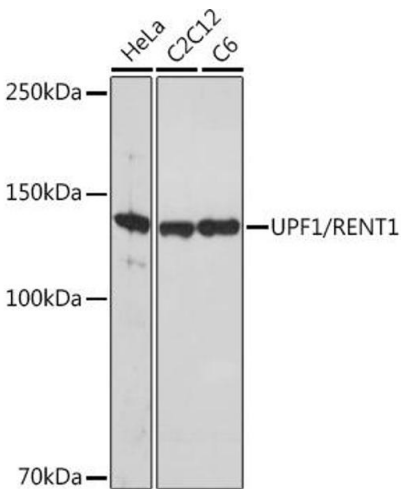
Storage: -20 °C

Storage Comment: Store at -20°C. Avoid freeze / thaw cycles.



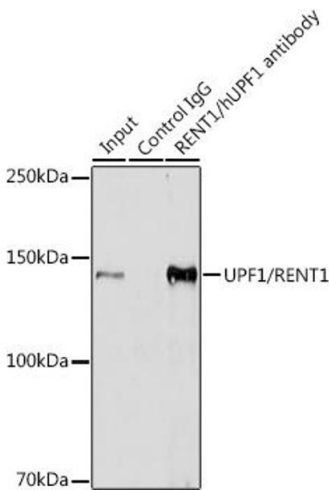
Immunofluorescence

Image 1. Immunofluorescence analysis of C6 cells using UPF1/RENT1 Rabbit mAb (ABIN7271226) at dilution of 1:100 (40x lens). Blue: DAPI for nuclear staining.



Western Blotting

Image 2. Western blot analysis of extracts of various cell lines, using UPF1/RENT1 Rabbit mAb (ABIN7271226) at 1:1000 dilution. Secondary antibody: HRP Goat Anti-Rabbit IgG (H+L) (ABIN1684268 and ABIN3020597) at 1:10000 dilution. Lysates/proteins: 25 µg per lane. Blocking buffer: 3 % nonfat dry milk in TBST. Detection: ECL Basic Kit (RM00020). Exposure time: 10s.



Immunoprecipitation

Image 3. Immunoprecipitation analysis of 300 µg extracts of HeLa cells using 3 µg UPF1/RENT1 antibody (ABIN7271226). Western blot was performed from the immunoprecipitate using UPF1/RENT1 antibody (ABIN7271226) at a dilution of 1:1000.