



Datasheet for ABIN7271233  
**anti-UCKL1 antibody (AA 1-200)**



[Go to Product page](#)

2 Images

Overview

Quantity:	100 µL
Target:	UCKL1
Binding Specificity:	AA 1-200
Reactivity:	Human
Host:	Rabbit
Clonality:	Polyclonal
Conjugate:	This UCKL1 antibody is un-conjugated
Application:	Western Blotting (WB), Immunohistochemistry (IHC)

Product Details

Purpose:	UCKL1 Rabbit pAb
Immunogen:	Recombinant fusion protein containing a sequence corresponding to amino acids 1-200 of human UCKL1 (NP_060329.2).
Sequence:	MAAPPARADA DPSPTSPTA RDTPGRQAEK SETACEDRSN AESLDRLPP VGTGRSPRKR TTSQCKSEPP LLRTSKRTIY TAGRPPWYNE HGTQSKEAFA IGLGGGSASG KTTVARMIE ALDVPWVLL SMDSFYKVLV EQQQEQAHN NFNFDHPDAF DFDLIISTLK KLKQGKSVKV PIYDFTTHSR KKDWKTYGA
Isotype:	IgG
Cross-Reactivity:	Human, Mouse, Rat
Characteristics:	Polyclonal Antibodies

## Product Details

---

Purification: Affinity purification

## Target Details

---

Target: UCKL1

Alternative Name: UCKL1 ([UCKL1 Products](#))

Background: The protein encoded by this gene is a uridine kinase. Uridine kinases catalyze the phosphorylation of uridine to uridine monophosphate. This protein has been shown to bind to Epstein-Barr nuclear antigen 3 as well as natural killer lytic-associated molecule. Ubiquitination of this protein is enhanced by the presence of natural killer lytic-associated molecule. In addition, protein levels decrease in the presence of natural killer lytic-associated molecule, suggesting that association with natural killer lytic-associated molecule results in ubiquitination and subsequent degradation of this protein. Alternative splicing results in multiple transcript variants.,UCKL1,UCK1L,URKL1,Epigenetics & Nuclear Signaling,Signal Transduction,Kinase,UCKL1

Molecular Weight: 44kDa/45kDa/59kDa/61kDa

Gene ID: 54963

UniProt: [Q9NWZ5](#)

Pathways: [Ribonucleoside Biosynthetic Process](#)

## Application Details

---

Application Notes: WB,1:500 - 1:2000,IHC,1:50 - 1:200

Restrictions: For Research Use only

## Handling

---

Format: Liquid

Buffer: PBS with 0.02 % sodium azide,50 % glycerol, pH 7.3.

Preservative: Sodium azide

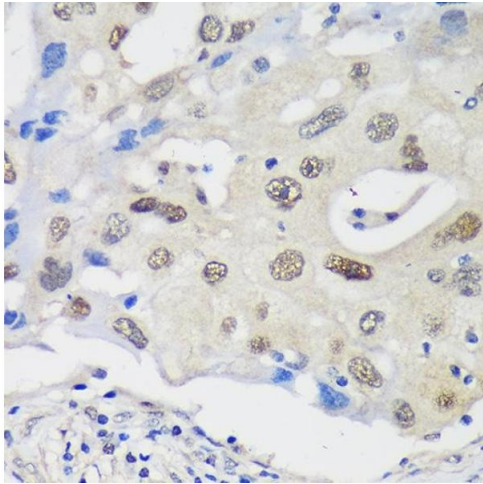
Precaution of Use: This product contains Sodium azide: a POISONOUS AND HAZARDOUS SUBSTANCE which should be handled by trained staff only.

Storage: -20 °C

## Handling

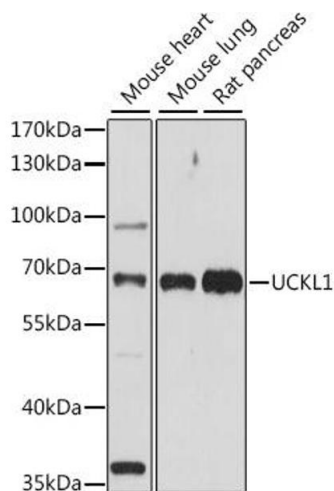
Storage Comment: Store at -20°C. Avoid freeze / thaw cycles.

## Images



### Immunohistochemistry

**Image 1.** Immunohistochemistry of paraffin-embedded Human breast cancer using UCKL1 Rabbit pAb (ABIN7271233) at dilution of 1:100 (40x lens). Perform microwave antigen retrieval with 10 mM PBS buffer pH 7.2 before commencing with IHC staining protocol.



### Western Blotting

**Image 2.** Western blot analysis of extracts of various cell lines, using UCKL1 antibody (ABIN7271233) at 1:1000 dilution. Secondary antibody: HRP Goat Anti-Rabbit IgG (H+L) (ABIN1684268 and ABIN3020597) at 1:10000 dilution. Lysates/proteins: 25 µg per lane. Blocking buffer: 3 % nonfat dry milk in TBST. Detection: ECL Basic Kit (RM00020). Exposure time: 90s.