

Datasheet for ABIN7271274

**anti-VPS18 antibody****2** Images[Go to Product page](#)

## Overview

Quantity:	100 µL
Target:	VPS18
Reactivity:	Human
Host:	Rabbit
Clonality:	Monoclonal
Conjugate:	This VPS18 antibody is un-conjugated
Application:	Western Blotting (WB)

## Product Details

Purpose:	VPS18 Rabbit mAb
Immunogen:	A synthesized peptide derived from human VPS18
Isotype:	IgG
Cross-Reactivity:	Human, Mouse, Rat
Characteristics:	Monoclonal Antibodies
Purification:	Affinity purification

## Target Details

Target:	VPS18
Alternative Name:	VPS18 ( <a href="#">VPS18 Products</a> )
Background:	Vesicle mediated protein sorting plays an important role in segregation of intracellular

## Target Details

molecules into distinct organelles. Genetic studies in yeast have identified more than 40 vacuolar protein sorting (VPS) genes involved in vesicle transport to vacuoles. This gene encodes the human homolog of yeast class C Vps18 protein. The mammalian class C Vps proteins are predominantly associated with late endosomes/lysosomes, and like their yeast counterparts, may mediate vesicle trafficking steps in the endosome/lysosome pathway. [provided by RefSeq, Jul 2008],PEP3,Signal Transduction,VPS18

Molecular Weight: 100kDa

Gene ID: 57617

UniProt: [Q9P253](#)

Pathways: [Asymmetric Protein Localization](#)

## Application Details

Application Notes: WB,1:500 - 1:2000

Restrictions: For Research Use only

## Handling

Format: Liquid

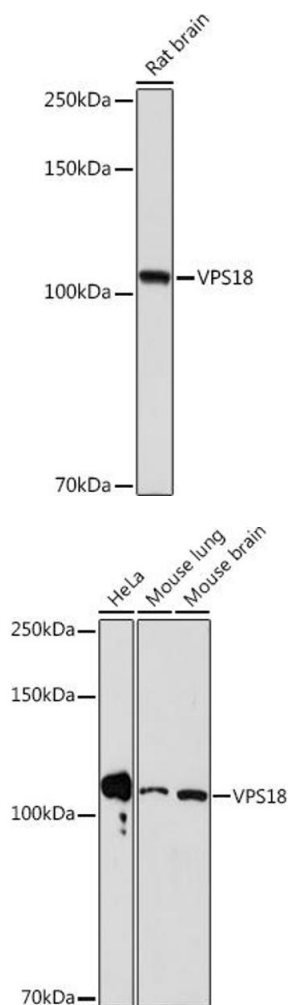
Buffer: PBS with 0.02 % sodium azide,0.05 % BSA,50 % glycerol, pH 7.3.

Preservative: Sodium azide

Precaution of Use: This product contains Sodium azide: a POISONOUS AND HAZARDOUS SUBSTANCE which should be handled by trained staff only.

Storage: -20 °C

Storage Comment: Store at -20°C. Avoid freeze / thaw cycles.



Western Blotting

**Image 1.** Western blot analysis of extracts of Rat brain, using VPS18 Rabbit mAb (ABIN7271274) at 1:1000 dilution. Secondary antibody: HRP Goat Anti-Rabbit IgG (H+L) (ABIN1684268 and ABIN3020597) at 1:10000 dilution. Lysates/proteins: 25 µg per lane. Blocking buffer: 3 % nonfat dry milk in TBST. Detection: ECL Enhanced Kit (RM00021). Exposure time: 180s.

Western Blotting

**Image 2.** Western blot analysis of extracts of various cell lines, using VPS18 Rabbit mAb (ABIN7271274) at 1:1000 dilution. Secondary antibody: HRP Goat Anti-Rabbit IgG (H+L) (ABIN1684268 and ABIN3020597) at 1:10000 dilution. Lysates/proteins: 25 µg per lane. Blocking buffer: 3 % nonfat dry milk in TBST. Detection: ECL Basic Kit (RM00020). Exposure time: 180s.