



[Go to Product page](#)

Datasheet for ABIN7271282
anti-VPS26A antibody (AA 208-327)

2 Images

Overview

Quantity:	100 µL
Target:	VPS26A
Binding Specificity:	AA 208-327
Reactivity:	Human
Host:	Rabbit
Clonality:	Polyclonal
Conjugate:	This VPS26A antibody is un-conjugated
Application:	Western Blotting (WB), Immunofluorescence (IF)

Product Details

Purpose:	VPS26A Rabbit pAb
Immunogen:	Recombinant fusion protein containing a sequence corresponding to amino acids 208-327 of human VPS26A (NP_004887.2).
Sequence:	ELQLIKKEIT GIGPSTTTET ETIAKYEIMD GAPVKGESIP IRLFLAGYDP TPTMRDVNKK FSVRYFLNLV LVDEEDRRYF KQQEILWRK APEKLRKQRT NFHQRFESPE SQASAEQPEM
Isotype:	IgG
Cross-Reactivity:	Human, Mouse, Rat
Characteristics:	Polyclonal Antibodies
Purification:	Affinity purification

Target Details

Target: VPS26A

Alternative Name: VPS26A ([VPS26A Products](#))

Background: This gene belongs to a group of vacuolar protein sorting (VPS) genes. The encoded protein is a component of a large multimeric complex, termed the retromer complex, involved in retrograde transport of proteins from endosomes to the trans-Golgi network. The close structural similarity between the yeast and human proteins that make up this complex suggests a similarity in function. Expression studies in yeast and mammalian cells indicate that this protein interacts directly with VPS35, which serves as the core of the retromer complex. Alternative splicing results in multiple transcript variants encoding different isoforms.,VPS26A,HB58,Hbeta58,PEP8A,VPS26,Signal Transduction,VPS26A

Molecular Weight: 28kDa/38kDa

Gene ID: 9559

UniProt: [075436](#)

Application Details

Application Notes: WB,1:500 - 1:2000,IF,1:50 - 1:200

Restrictions: For Research Use only

Handling

Format: Liquid

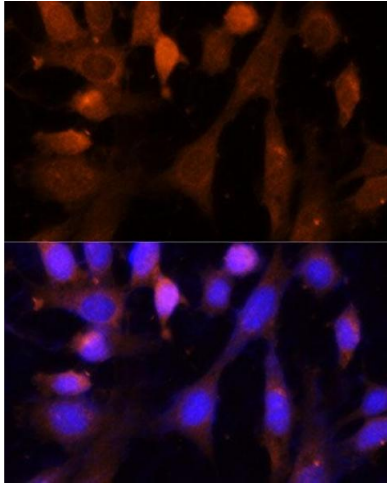
Buffer: PBS with 0.02 % sodium azide,50 % glycerol, pH 7.3.

Preservative: Sodium azide

Precaution of Use: This product contains Sodium azide: a POISONOUS AND HAZARDOUS SUBSTANCE which should be handled by trained staff only.

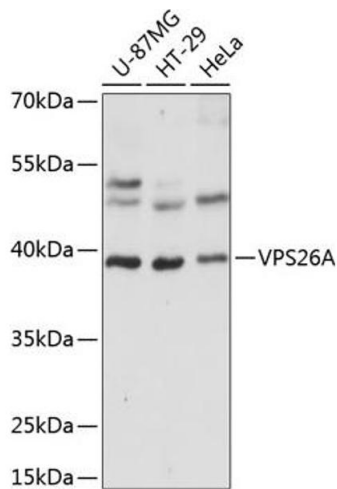
Storage: -20 °C

Storage Comment: Store at -20°C. Avoid freeze / thaw cycles.



Immunofluorescence

Image 1. Immunofluorescence analysis of NIH-3T3 cells using VPS26A Polyclonal Antibody at dilution of 1:100 (40x lens). Blue: DAPI for nuclear staining.



Western Blotting

Image 2. Western blot analysis of extracts of various cell lines, using VPS26A antibody at 1:1000 dilution. Secondary antibody: HRP Goat Anti-Rabbit IgG (H+L) (ABIN1684268 and ABIN3020597) at 1:10000 dilution. Lysates/proteins: 25 µg per lane. Blocking buffer: 3% nonfat dry milk in TBST. Detection: ECL Basic Kit (RM00020). Exposure time: 5s.