

Datasheet for ABIN7271339

## anti-VWF antibody

### 4 Images



[Go to Product page](#)

### Overview

Quantity:	100 µL
Target:	VWF
Reactivity:	Human
Host:	Rabbit
Clonality:	Monoclonal
Conjugate:	This VWF antibody is un-conjugated
Application:	Immunohistochemistry (IHC)

### Product Details

Purpose:	von Willebrand factor (VWF) Rabbit mAb
Immunogen:	A synthesized peptide derived from human von Willebrand factor (VWF)
Isotype:	IgG
Cross-Reactivity:	Human, Mouse
Characteristics:	Monoclonal Antibodies
Purification:	Affinity purification

### Target Details

Target:	VWF
Alternative Name:	VWF ( <a href="#">VWF Products</a> )
Background:	This gene encodes a glycoprotein involved in hemostasis. The encoded preproprotein is

## Target Details

---

proteolytically processed following assembly into large multimeric complexes. These complexes function in the adhesion of platelets to sites of vascular injury and the transport of various proteins in the blood. Mutations in this gene result in von Willebrand disease, an inherited bleeding disorder. An unprocessed pseudogene has been found on chromosome 22. [provided by RefSeq, Oct 2015],F8VWF, VWD,Angiogenesis,Angiogenesis\_Angiogenic growth factors,Blood,Blood\_Coagulation,Blood\_Serum Proteins,Cancer,Cardiovascular,Cell Biology & Developmental Biology,Endothelial Progenitors,Growth factors,Invasion and Metastasis,Stem Cells,VWF

---

Molecular Weight: 309kDa

---

Gene ID: 7450

---

UniProt: [P04275](#)

## Application Details

---

Application Notes: IHC,1:50 - 1:200

---

Restrictions: For Research Use only

## Handling

---

Format: Liquid

---

Buffer: PBS with 0.02 % sodium azide,0.05 % BSA,50 % glycerol, pH 7.3.

---

Preservative: Sodium azide

---

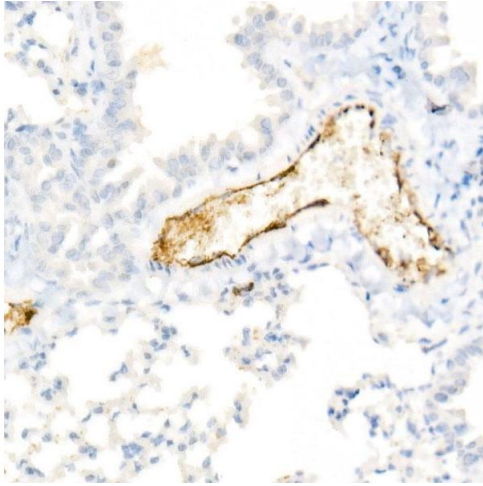
Precaution of Use: This product contains Sodium azide: a POISONOUS AND HAZARDOUS SUBSTANCE which should be handled by trained staff only.

---

Storage: -20 °C

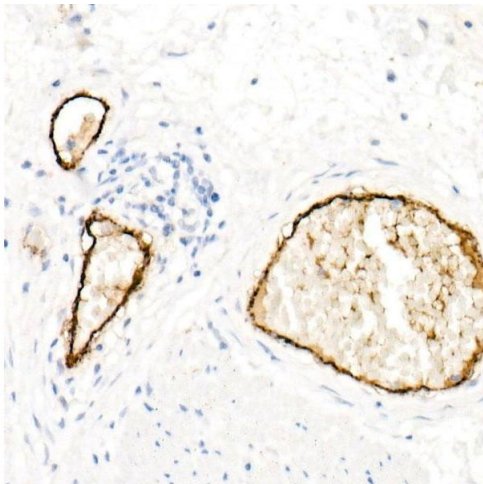
---

Storage Comment: Store at -20°C. Avoid freeze / thaw cycles.



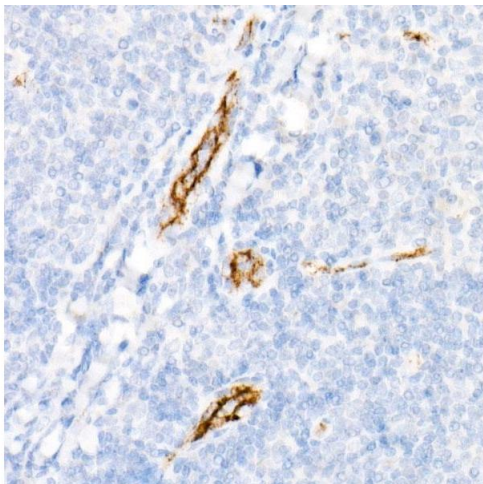
#### Immunohistochemistry

**Image 1.** Immunohistochemistry of paraffin-embedded Mouse lung using von Willebrand factor (VWF) antibody (ABIN7271339) at dilution of 1:800 (40x lens). Perform high pressure antigen retrieval with 10 mM citrate buffer pH 6.0 before commencing with IHC staining protocol.



#### Immunohistochemistry

**Image 2.** Immunohistochemistry of paraffin-embedded Human esophageal cancer using von Willebrand factor (VWF) antibody (ABIN7271339) at dilution of 1:800 (40x lens). Perform high pressure antigen retrieval with 10 mM citrate buffer pH 6.0 before commencing with IHC staining protocol.



#### Immunohistochemistry

**Image 3.** Immunohistochemistry of paraffin-embedded Human tonsil using von Willebrand factor (VWF) antibody (ABIN7271339) at dilution of 1:800 (40x lens). Perform high pressure antigen retrieval with 10 mM citrate buffer pH 6.0 before commencing with IHC staining protocol.

Please check the [product details page](#) for more images. Overall 4 images are available for ABIN7271339.