



[Go to Product page](#)

Datasheet for ABIN7271344
anti-WFDC1 antibody (AA 111-220)

2 Images

Overview

| | |
|----------------------|--|
| Quantity: | 100 µL |
| Target: | WFDC1 |
| Binding Specificity: | AA 111-220 |
| Reactivity: | Human |
| Host: | Rabbit |
| Clonality: | Polyclonal |
| Conjugate: | This WFDC1 antibody is un-conjugated |
| Application: | Western Blotting (WB), Immunofluorescence (IF) |

Product Details

| | |
|-------------------|--|
| Purpose: | WFDC1 Rabbit pAb |
| Immunogen: | Recombinant fusion protein containing a sequence corresponding to amino acids 111-220 of human WFDC1 (NP_067020.2). |
| Sequence: | PPVLDWLVP KPRWLGNGW LLDGPEEVLQ AEACSTTEDG AEPLLCPSGY ECHILSPGDV AEGIPNRGQC VKQRRQADGR ILRHKLYKEY PEGDSKNVAE PGRGQKHFQ |
| Isotype: | IgG |
| Cross-Reactivity: | Human, Mouse |
| Characteristics: | Polyclonal Antibodies |
| Purification: | Affinity purification |

Target Details

Target: WFDC1

Alternative Name: WFDC1 ([WFDC1 Products](#))

Background: This gene encodes a member of the WAP-type four disulfide core domain family. The WAP-type four-disulfide core domain contains eight cysteines forming four disulfide bonds at the core of the protein, and functions as a protease inhibitor in many family members. This gene is mapped to chromosome 16q24, an area of frequent loss of heterozygosity in cancers, including prostate, breast and hepatocellular cancers and Wilms' tumor. This gene is downregulated in many cancer types and may be involved in the inhibition of cell proliferation. The encoded protein may also play a role in the susceptibility of certain CD4 memory T cells to human immunodeficiency virus infection. Alternative splicing results in multiple transcript variants.,WFDC1;PS20,Cell Biology & Developmental Biology,WFDC1

Gene ID: 58189

UniProt: [Q9HC57](#)

Application Details

Application Notes: WB,1:500 - 1:2000,IF,1:50 - 1:200

Restrictions: For Research Use only

Handling

Format: Liquid

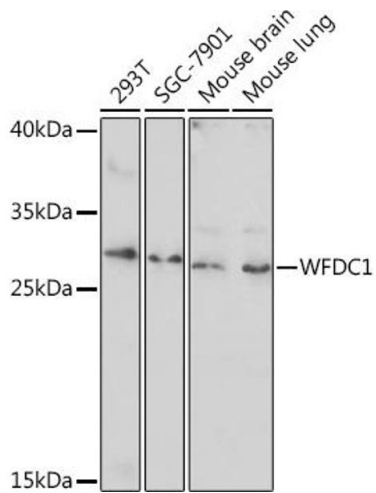
Buffer: PBS with 0.02 % sodium azide,50 % glycerol, pH 7.3.

Preservative: Sodium azide

Precaution of Use: This product contains Sodium azide: a POISONOUS AND HAZARDOUS SUBSTANCE which should be handled by trained staff only.

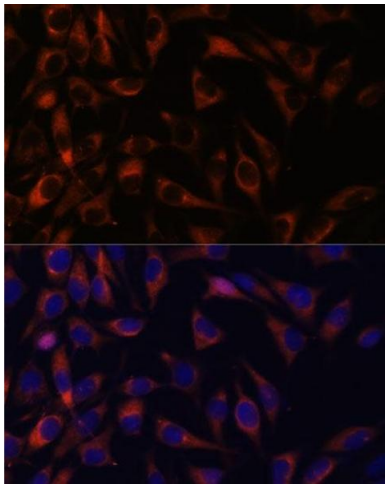
Storage: -20 °C

Storage Comment: Store at -20°C. Avoid freeze / thaw cycles.



Western Blotting

Image 1. Western blot analysis of extracts of various cell lines, using WFDC1 Rabbit pAb (ABIN7271344) at 1:1000 dilution. Secondary antibody: HRP Goat Anti-Rabbit IgG (H+L) (ABIN1684268 and ABIN3020597) at 1:10000 dilution. Lysates/proteins: 25 µg per lane. Blocking buffer: 3 % nonfat dry milk in TBST. Detection: ECL Basic Kit (RM00020). Exposure time: 10s.



Immunofluorescence

Image 2. Immunofluorescence analysis of L929 cells using WFDC1 antibody (ABIN7271344) at dilution of 1:100. Blue: DAPI for nuclear staining.