

Datasheet for ABIN7271347
anti-WASF3 antibody (AA 200-300)[Go to Product page](#)

1 Image

Overview

Quantity:	100 µL
Target:	WASF3
Binding Specificity:	AA 200-300
Reactivity:	Human
Host:	Rabbit
Clonality:	Polyclonal
Conjugate:	This WASF3 antibody is un-conjugated
Application:	Western Blotting (WB)

Product Details

Purpose:	WASF3 Rabbit pAb
Immunogen:	A synthetic peptide corresponding to a sequence within amino acids 200-300 of human WASF3 (NP_001278894.1).
Sequence:	RTRKEEWERR KMGIEFMSDA KKLEQAGSAK EDRVPSGSHA SDVTDYSYP A TPNHSLHPQP VTPSYAAGDV PPHGPASQAA EHEYRPPSAS ARHMALNRPQ Q
Isotype:	IgG
Cross-Reactivity:	Human, Mouse, Rat
Characteristics:	Polyclonal Antibodies
Purification:	Affinity purification

Target Details

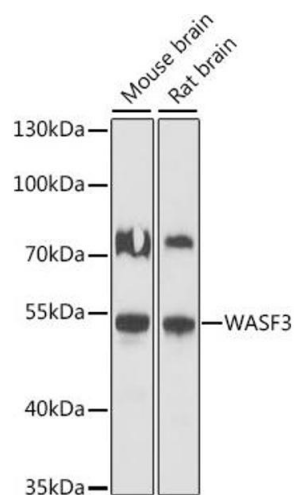
Target:	WASF3
Alternative Name:	WASF3 (WASF3 Products)
Background:	This gene encodes a member of the Wiskott-Aldrich syndrome protein family. The gene product is a protein that forms a multiprotein complex that links receptor kinases and actin. Binding to actin occurs through a C-terminal verprolin homology domain in all family members. The multiprotein complex serves to transduce signals that involve changes in cell shape, motility or function. A pseudogene of this gene have been defined on chromosome 6. Alternative splicing results in multiple transcript variants.,WASF3,Brush-1,SCAR3,WAVE3,Cancer,Signal Transduction,G protein signaling,Signal Transduction,Cell Biology & Developmental Biology,Cytoskeleton,Microfilaments,WASF3
Molecular Weight:	55kDa
Gene ID:	10810
UniProt:	Q9UPY6
Pathways:	RTK Signaling

Application Details

Application Notes:	WB,1:500 - 1:2000
Restrictions:	For Research Use only

Handling

Format:	Liquid
Buffer:	PBS with 0.02 % sodium azide,50 % glycerol, pH 7.3.
Preservative:	Sodium azide
Precaution of Use:	This product contains Sodium azide: a POISONOUS AND HAZARDOUS SUBSTANCE which should be handled by trained staff only.
Storage:	-20 °C
Storage Comment:	Store at -20°C. Avoid freeze / thaw cycles.



Western Blotting

Image 1. Western blot analysis of extracts of various cell lines, using W antibody (ABIN7271347) at 1:1000 dilution. Secondary antibody: HRP Goat Anti-Rabbit IgG (H+L) (ABIN1684268 and ABIN3020597) at 1:10000 dilution. Lysates/proteins: 25 µg per lane. Blocking buffer: 3 % nonfat dry milk in TBST. Detection: ECL Basic Kit (RM00020). Exposure time: 3s.