



[Go to Product page](#)

Datasheet for ABIN7271348
anti-WIPF1 antibody (AA 400-500)

4 Images

Overview

| | |
|----------------------|---|
| Quantity: | 100 µL |
| Target: | WIPF1 |
| Binding Specificity: | AA 400-500 |
| Reactivity: | Human |
| Host: | Rabbit |
| Clonality: | Polyclonal |
| Conjugate: | This WIPF1 antibody is un-conjugated |
| Application: | Western Blotting (WB), Immunohistochemistry (IHC) |

Product Details

| | |
|-------------------|---|
| Purpose: | WIPF1 Rabbit pAb |
| Immunogen: | A synthetic peptide corresponding to a sequence within amino acids 400-500 of human WIPF1 (NP_001070737.1). |
| Sequence: | QLPSRSGVDS PRSGPRPLP PDRPSAGAPP PPPPSTSIRN GFQDSPCEDE WESRFYFHPI SDLPPPEPYV QTTKSYPSKL ARNESRSGSN RRERGAAPLP P |
| Isotype: | IgG |
| Cross-Reactivity: | Human, Mouse, Rat |
| Characteristics: | Polyclonal Antibodies |
| Purification: | Affinity purification |

Target Details

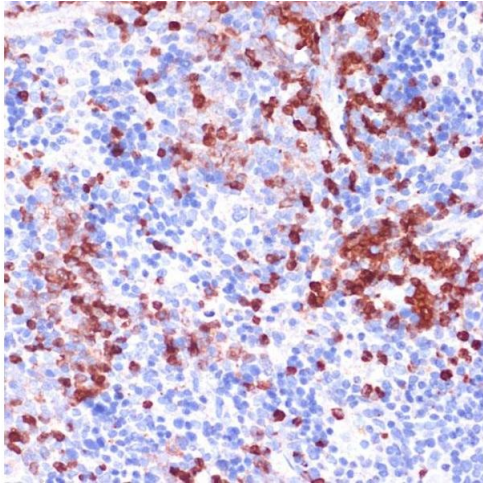
| | |
|-------------------|---|
| Target: | WIPF1 |
| Alternative Name: | WIPF1 (WIPF1 Products) |
| Background: | This gene encodes a protein that plays an important role in the organization of the actin cytoskeleton. The encoded protein binds to a region of Wiskott-Aldrich syndrome protein that is frequently mutated in Wiskott-Aldrich syndrome, an X-linked recessive disorder. Impairment of the interaction between these two proteins may contribute to the disease. Two transcript variants encoding the same protein have been identified for this gene.,WIPF1,PRPL-2,WAS2,WASPIP,WIP,Signal Transduction,Cell Biology & Developmental Biology,Cytoskeleton,Microfilaments,WIPF1 |
| Gene ID: | 7456 |
| UniProt: | O43516 |
| Pathways: | RTK Signaling |

Application Details

| | |
|--------------------|-------------------------------------|
| Application Notes: | WB,1:500 - 1:2000,IHC,1:100 - 1:200 |
| Restrictions: | For Research Use only |

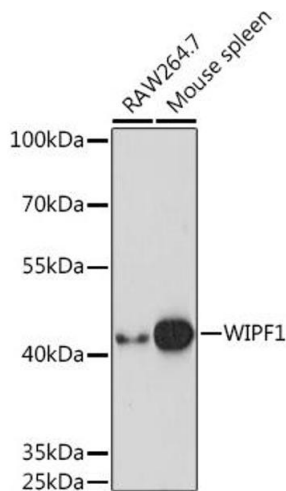
Handling

| | |
|--------------------|--|
| Format: | Liquid |
| Buffer: | PBS with 0.02 % sodium azide,50 % glycerol, pH 7.3. |
| Preservative: | Sodium azide |
| Precaution of Use: | This product contains Sodium azide: a POISONOUS AND HAZARDOUS SUBSTANCE which should be handled by trained staff only. |
| Storage: | -20 °C |
| Storage Comment: | Store at -20°C. Avoid freeze / thaw cycles. |



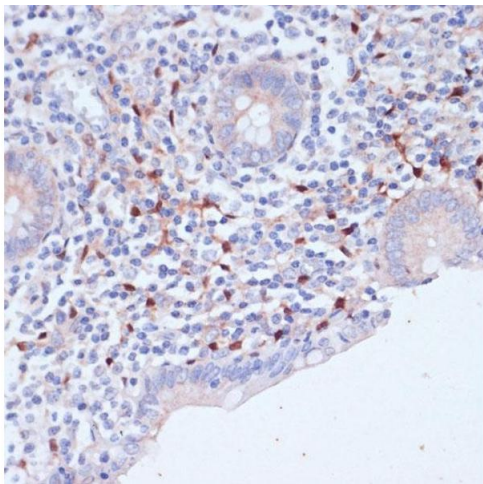
Immunohistochemistry

Image 1. Immunohistochemistry of paraffin-embedded mouse spleen using WIPF1 antibody (ABIN7271348) at dilution of 1:100 (40x lens). Perform microwave antigen retrieval with 10 mM PBS buffer pH 7.2 before commencing with IHC staining protocol.



Western Blotting

Image 2. Western blot analysis of extracts of various cell lines, using WIPF1 Rabbit pAb (ABIN7271348) at 1:1000 dilution. Secondary antibody: HRP Goat Anti-Rabbit IgG (H+L) (ABIN1684268 and ABIN3020597) at 1:10000 dilution. Lysates/proteins: 25 µg per lane. Blocking buffer: 3 % nonfat dry milk in TBST. Detection: ECL Basic Kit (RM00020). Exposure time: 10s.



Immunohistochemistry

Image 3. Immunohistochemistry of paraffin-embedded human appendix using WIPF1 antibody (ABIN7271348) at dilution of 1:100 (40x lens). Perform microwave antigen retrieval with 10 mM PBS buffer pH 7.2 before commencing with IHC staining protocol.

Please check the [product details page](#) for more images. Overall 4 images are available for ABIN7271348.