

Datasheet for ABIN7271349

anti-Strumpellin antibody (AA 380-530)**3** Images[Go to Product page](#)

Overview

Quantity:	100 µL
Target:	Strumpellin (WASHC5)
Binding Specificity:	AA 380-530
Reactivity:	Human
Host:	Rabbit
Clonality:	Polyclonal
Conjugate:	This Strumpellin antibody is un-conjugated
Application:	Western Blotting (WB), Immunohistochemistry (IHC)

Product Details

Purpose:	KIAA0196 Rabbit pAb
Immunogen:	Recombinant fusion protein containing a sequence corresponding to amino acids 380-530 of human KIAA0196 (NP_055661.3).
Isotype:	IgG
Cross-Reactivity:	Mouse, Rat
Characteristics:	Polyclonal Antibodies
Purification:	Affinity purification

Target Details

Target:	Strumpellin (WASHC5)
---------	----------------------

Target Details

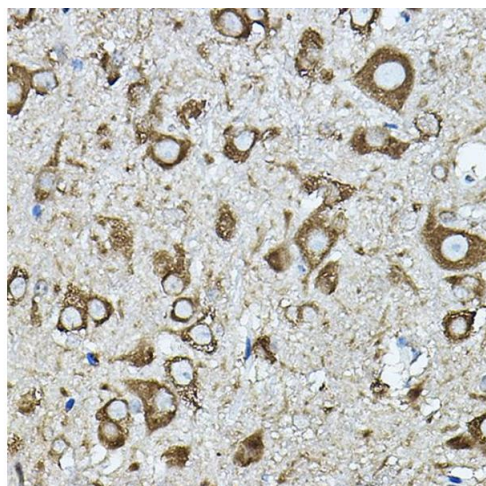
Alternative Name:	KIAA0196 (WASHC5 Products)
Background:	This gene encodes a 134 kDa protein named strumpellin that is predicted to have multiple transmembrane domains and a spectrin-repeat-containing domain. This ubiquitously expressed gene has its highest expression in skeletal muscle. The protein is named for Strumpell disease, a form of hereditary spastic paraplegia (HSP). Spastic paraplegias are a diverse group of disorders in which the autosomal dominant forms are characterized by progressive, lower extremity spasticity caused by axonal degeneration in the terminal portions of the longest descending and ascending corticospinal tracts. More than 30 loci (SPG1-33) have been implicated in hereditary spastic paraplegia diseases.,RTSC, SPG8, RTSC1, KIAA0196,KIAA0196
Gene ID:	9897
UniProt:	Q12768

Application Details

Application Notes:	WB,1:500 - 1:2000,IHC,1:50 - 1:200
Restrictions:	For Research Use only

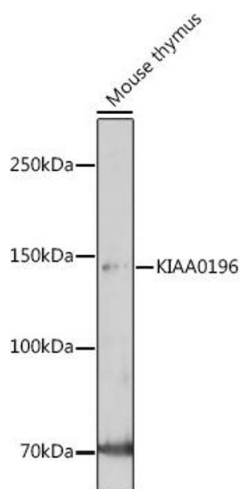
Handling

Format:	Liquid
Buffer:	PBS with 0.02 % sodium azide,50 % glycerol, pH 7.3.
Preservative:	Sodium azide
Precaution of Use:	This product contains Sodium azide: a POISONOUS AND HAZARDOUS SUBSTANCE which should be handled by trained staff only.
Storage:	-20 °C
Storage Comment:	Store at -20°C. Avoid freeze / thaw cycles.



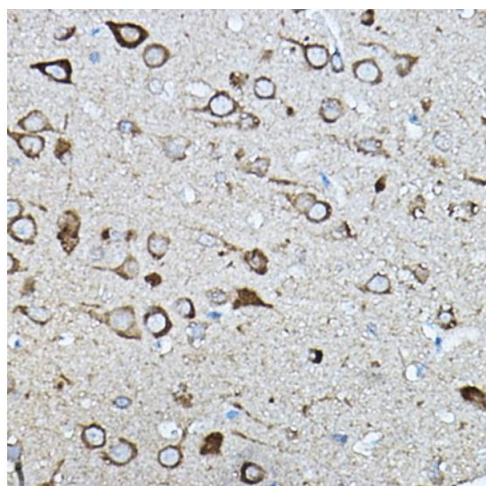
Immunohistochemistry

Image 1. Immunohistochemistry of paraffin-embedded mouse spinal cord using KI Rabbit pAb (ABIN7271349) at dilution of 1:100 (40x lens). Perform high pressure antigen retrieval with 10 mM citrate buffer pH 6.0 before commencing with IHC staining protocol.



Western Blotting

Image 2. Western blot analysis of extracts of Mouse thymus, using KI antibody (ABIN7271349) at 1:1000 dilution. Secondary antibody: HRP Goat Anti-Rabbit IgG (H+L) (ABIN1684268 and ABIN3020597) at 1:10000 dilution. Lysates/proteins: 25 µg per lane. Blocking buffer: 3 % nonfat dry milk in TBST. Detection: ECL Enhanced Kit (RM00021). Exposure time: 300s.



Immunohistochemistry

Image 3. Immunohistochemistry of paraffin-embedded rat brain using KI Rabbit pAb (ABIN7271349) at dilution of 1:100 (40x lens). Perform high pressure antigen retrieval with 10 mM citrate buffer pH 6.0 before commencing with IHC staining protocol.