

Datasheet for ABIN7271358

anti-WDR5 antibody[Go to Product page](#)**1** Image

Overview

Quantity:	100 µL
Target:	WDR5
Reactivity:	Human
Host:	Rabbit
Clonality:	Monoclonal
Conjugate:	This WDR5 antibody is un-conjugated
Application:	Western Blotting (WB)

Product Details

Purpose:	WDR5 Rabbit mAb
Immunogen:	A synthesized peptide derived from human WDR5
Isotype:	IgG
Cross-Reactivity:	Human, Rat
Characteristics:	Monoclonal Antibodies
Purification:	Affinity purification

Target Details

Target:	WDR5
Alternative Name:	WDR5 (WDR5 Products)
Background:	This gene encodes a member of the WD repeat protein family. WD repeats are minimally

Target Details

conserved regions of approximately 40 amino acids typically bracketed by gly-his and trp-aspartate (GH-WD), which may facilitate formation of heterotrimeric or multiprotein complexes. Members of this family are involved in a variety of cellular processes, including cell cycle progression, signal transduction, apoptosis, and gene regulation. This protein contains 7 WD repeats. Alternatively spliced transcript variants encoding the same protein have been identified. [provided by RefSeq, Jul 2008],BIG-3, CFAP89, SWD3,Chromatin Remodeling,Epigenetics & Nuclear Signaling,WDR5

Molecular Weight: 36kDa

Gene ID: 11091

UniProt: [P61964](#)

Application Details

Application Notes: WB,1:500 - 1:2000

Restrictions: For Research Use only

Handling

Format: Liquid

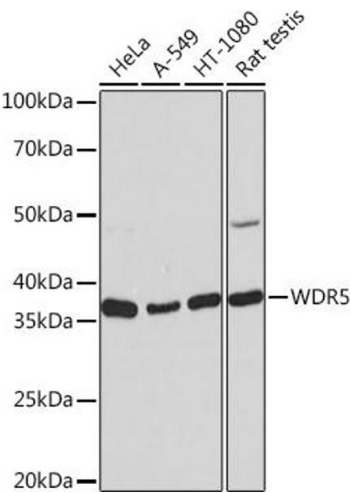
Buffer: PBS with 0.02 % sodium azide,0.05 % BSA,50 % glycerol, pH 7.3.

Preservative: Sodium azide

Precaution of Use: This product contains Sodium azide: a POISONOUS AND HAZARDOUS SUBSTANCE which should be handled by trained staff only.

Storage: -20 °C

Storage Comment: Store at -20°C. Avoid freeze / thaw cycles.



Western Blotting

Image 1. Western blot analysis of extracts of various cell lines, using WDR5 Rabbit mAb (ABIN7271358) at 1:1000 dilution. Secondary antibody: HRP Goat Anti-Rabbit IgG (H+L) (ABIN1684268 and ABIN3020597) at 1:10000 dilution. Lysates/proteins: 25 µg per lane. Blocking buffer: 3 % nonfat dry milk in TBST. Detection: ECL Basic Kit (RM00020). Exposure time: 10s.