

Datasheet for ABIN7271368

anti-WT1 antibody**7** Images[Go to Product page](#)

Overview

Quantity:	100 µL
Target:	WT1
Reactivity:	Human
Host:	Rabbit
Clonality:	Monoclonal
Conjugate:	This WT1 antibody is un-conjugated
Application:	Immunohistochemistry (IHC), Western Blotting (WB)

Product Details

Purpose:	WT1 Rabbit mAb
Immunogen:	A synthesized peptide derived from human WT1.
Isotype:	IgG
Cross-Reactivity:	Mouse, Rat
Characteristics:	Monoclonal Antibodies
Purification:	Affinity purification

Target Details

Target:	WT1
Alternative Name:	Wilms Tumor Protein (WT1 Products)
Background:	This gene encodes a transcription factor that contains four zinc-finger motifs at the C-terminus

Target Details

and a proline/glutamine-rich DNA-binding domain at the N-terminus. It has an essential role in the normal development of the urogenital system, and it is mutated in a small subset of patients with Wilms tumor. This gene exhibits complex tissue-specific and polymorphic imprinting pattern, with biallelic, and monoallelic expression from the maternal and paternal alleles in different tissues. Multiple transcript variants have been described. In several variants, there is evidence for the use of a non-AUG (CUG) translation initiation codon upstream of, and in-frame with the first AUG. Authors of PMID:7926762 also provide evidence that WT1 mRNA undergoes RNA editing in human and rat, and that this process is tissue-restricted and developmentally regulated.,WT1, AWT1, EWS-WT1, GUD, NPHS4, WAGR, WIT-2, WT33, Wilms tumor 1,Epigenetics & Nuclear Signaling,Transcription Factors,Cancer,Tumor biomarkers,Signal Transduction,ErbB-HER Signaling Pathway,Cell Biology & Developmental Biology,Apoptosis,Wilms Tumor Protein

Molecular Weight: 55kDa

Gene ID: 7490

UniProt: [P19544](#)

Pathways: [Tube Formation](#)

Application Details

Application Notes: WB,1:500 - 1:2000,IHC,1:50 - 1:200

Restrictions: For Research Use only

Handling

Format: Liquid

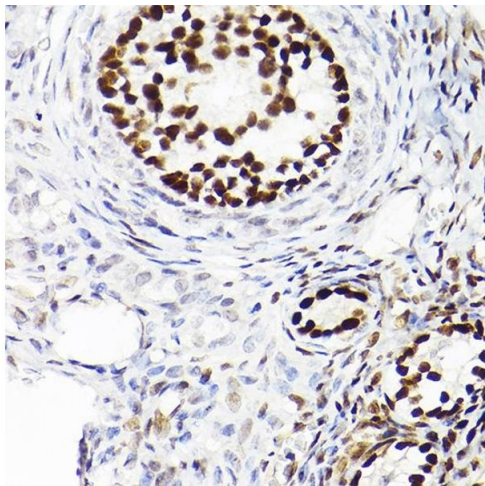
Buffer: PBS with 0.02 % sodium azide,0.05 % BSA,50 % glycerol, pH 7.3.

Preservative: Sodium azide

Precaution of Use: This product contains Sodium azide: a POISONOUS AND HAZARDOUS SUBSTANCE which should be handled by trained staff only.

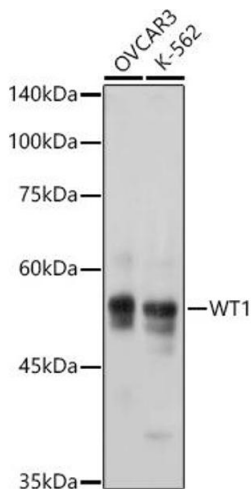
Storage: -20 °C

Storage Comment: Store at -20°C. Avoid freeze / thaw cycles.



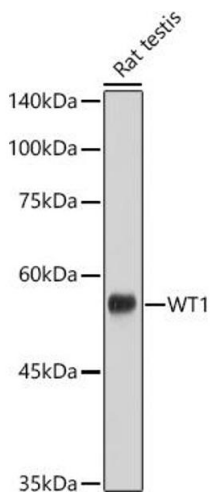
Immunohistochemistry

Image 1. Immunohistochemistry of paraffin-embedded rat ovary using WT1 Rabbit mAb at dilution of 1:100 (40x lens). Perform high pressure antigen retrieval with 10 mM citrate buffer pH 6.0 before commencing with IHC staining protocol.



Western Blotting

Image 2. Western blot analysis of extracts of various cell lines, using WT1 antibody at 1:1000 dilution. Secondary antibody: HRP Goat Anti-Rabbit IgG (H+L) (ABIN1684268 and ABIN3020597) at 1:10000 dilution. Lysates/proteins: 25 µg per lane. Blocking buffer: 3 % nonfat dry milk in TBST. Detection: ECL Basic Kit (RM00020). Exposure time: 1s.



Western Blotting

Image 3. Western blot analysis of extracts of Rat testis, using WT1 antibody at 1:1000 dilution. Secondary antibody: HRP Goat Anti-Rabbit IgG (H+L) (ABIN1684268 and ABIN3020597) at 1:10000 dilution. Lysates/proteins: 25 µg per lane. Blocking buffer: 3 % nonfat dry milk in TBST. Detection: ECL Basic Kit (RM00020). Exposure time: 30s.

Please check the [product details page](#) for more images. Overall 7 images are available for ABIN7271368.