



[Go to Product page](#)

Datasheet for ABIN7271383

## anti-WIF1 antibody

### 1 Image

#### Overview

Quantity:	100 µL
Target:	WIF1
Reactivity:	Human
Host:	Rabbit
Clonality:	Monoclonal
Conjugate:	This WIF1 antibody is un-conjugated
Application:	Western Blotting (WB)

#### Product Details

Purpose:	WIF1 Rabbit mAb
Immunogen:	A synthesized peptide derived from human WIF1
Isotype:	IgG
Cross-Reactivity:	Human, Mouse, Rat
Characteristics:	Monoclonal Antibodies
Purification:	Affinity purification

#### Target Details

Target:	WIF1
Alternative Name:	WIF1 ( <a href="#">WIF1 Products</a> )
Background:	The protein encoded by this gene functions to inhibit WNT proteins, which are extracellular

## Target Details

---

signaling molecules that play a role in embryonic development. This protein contains a WNT inhibitory factor (WIF) domain and five epidermal growth factor (EGF)-like domains, and is thought to be involved in mesoderm segmentation. This gene functions as a tumor suppressor gene, and has been found to be epigenetically silenced in various cancers. [provided by RefSeq, Jun 2010],WIF-1,Cell Biology & Developmental Biology,Stem Cells,Wnt/ $\beta$ -Catenin Signaling Pathway,WIF1

---

Molecular Weight: 41kDa

---

Gene ID: 11197

---

UniProt: [Q9Y5W5](#)

---

Pathways: [WNT Signaling, Positive Regulation of fat Cell Differentiation](#)

## Application Details

---

---

Application Notes: WB,1:500 - 1:2000

---

Restrictions: For Research Use only

## Handling

---

---

Format: Liquid

---

Buffer: PBS with 0.02 % sodium azide,0.05 % BSA,50 % glycerol, pH 7.3.

---

Preservative: Sodium azide

---

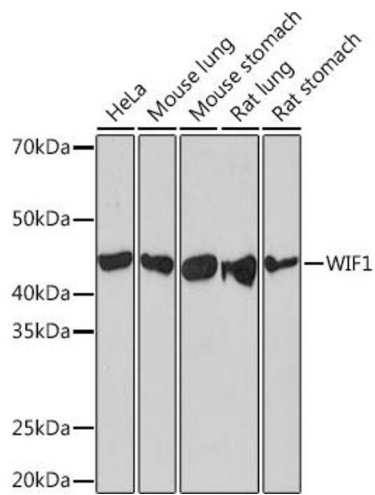
Precaution of Use: This product contains Sodium azide: a POISONOUS AND HAZARDOUS SUBSTANCE which should be handled by trained staff only.

---

Storage: -20 °C

---

Storage Comment: Store at -20°C. Avoid freeze / thaw cycles.



### Western Blotting

**Image 1.** Western blot analysis of extracts of various cell lines, using WIF1 Rabbit mAb (ABIN7271383) at 1:1000 dilution. Secondary antibody: HRP Goat Anti-Rabbit IgG (H+L) (ABIN1684268 and ABIN3020597) at 1:10000 dilution. Lysates/proteins: 25 µg per lane. Blocking buffer: 3 % nonfat dry milk in TBST. Detection: ECL Basic Kit (RM00020). Exposure time: 3 min.