

Datasheet for ABIN7271384 anti-WISP3 antibody (AA 42-260)



[Go to Product page](#)

1 Image

Overview

Quantity:	100 µL
Target:	WISP3
Binding Specificity:	AA 42-260
Reactivity:	Human
Host:	Rabbit
Clonality:	Polyclonal
Conjugate:	This WISP3 antibody is un-conjugated
Application:	Western Blotting (WB)

Product Details

Purpose:	WISP3 Rabbit pAb
Immunogen:	Recombinant fusion protein containing a sequence corresponding to amino acids 42-260 of human WISP3 (NP_937882.1).
Sequence:	TGPLDTTPEG RPGEVSDAPQ RKQFCHWPCK CPQQKPRCPP GVSLVRDGC CCKICAKQPG EICNEADLCD PHKGLYCDYS VDRPRYETGV CAYLVAVGCE FNQVHYHNGQ VFQPNPLFSC LCVSGAIGCT PLFIPKLAGS HCSGAKGGKK SDQSNCSLEP LLQQLSTSYK TMPAYRNLPL IWKKKCLVQA TKWTPCSRTC GMGISNRVTN ENSNCEMRK
Isotype:	IgG
Cross-Reactivity:	Human, Mouse, Rat
Characteristics:	Polyclonal Antibodies

Product Details

Purification: Affinity purification

Target Details

Target: WISP3

Alternative Name: WISP3 ([WISP3 Products](#))

Background: This gene encodes a member of the WNT1 inducible signaling pathway (WISP) protein subfamily, which belongs to the connective tissue growth factor (CTGF) family. WNT1 is a member of a family of cysteine-rich, glycosylated signaling proteins that mediate diverse developmental processes. The CTGF family members are characterized by four conserved cysteine-rich domains: insulin-like growth factor-binding domain, von Willebrand factor type C module, thrombospondin domain and C-terminal cystine knot-like domain. This gene is overexpressed in colon tumors. It may be downstream in the WNT1 signaling pathway that is relevant to malignant transformation. Mutations of this gene are associated with progressive pseudorheumatoid dysplasia, an autosomal recessive skeletal disorder, indicating that the gene is essential for normal postnatal skeletal growth and cartilage homeostasis. Multiple transcript variants encoding different isoforms have been found for this gene.,WISP3,CCN6,LIBC,PPAC,PPD,WISP-3,Cell Biology & Developmental Biology,Growth factor,Immunology & Inflammation,Stem Cells,Mesenchymal Stem Cells,WISP3

Molecular Weight: 39kDa/41kDa

Gene ID: 8838

UniProt: [O95389](#)

Pathways: [WNT Signaling](#), [Growth Factor Binding](#)

Application Details

Application Notes: WB,1:500 - 1:2000

Restrictions: For Research Use only

Handling

Format: Liquid

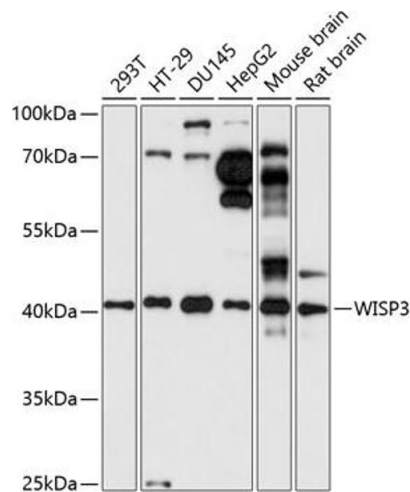
Buffer: PBS with 0.02 % sodium azide,50 % glycerol, pH 7.3.

Preservative: Sodium azide

Handling

Precaution of Use:	This product contains Sodium azide: a POISONOUS AND HAZARDOUS SUBSTANCE which should be handled by trained staff only.
Storage:	-20 °C
Storage Comment:	Store at -20°C. Avoid freeze / thaw cycles.

Images



Western Blotting

Image 1. Western blot analysis of extracts of various cell lines, using WISP3 antibody (ABIN7271384) at 1:1000 dilution. Secondary antibody: HRP Goat Anti-Rabbit IgG (H+L) (ABIN1684268 and ABIN3020597) at 1:10000 dilution. Lysates/proteins: 25 µg per lane. Blocking buffer: 3 % nonfat dry milk in TBST. Detection: ECL Basic Kit (RM00020). Exposure time: 30s.