

Datasheet for ABIN7271386
anti-WHSC1L1 antibody



[Go to Product page](#)

1 Image

Overview

Quantity:	100 µL
Target:	WHSC1L1
Reactivity:	Human
Host:	Rabbit
Clonality:	Monoclonal
Conjugate:	This WHSC1L1 antibody is un-conjugated
Application:	Western Blotting (WB)

Product Details

Purpose:	NSD3/WHSC1L1 Rabbit mAb
Immunogen:	A synthesized peptide derived from human NSD3/WHSC1L1
Isotype:	IgG
Cross-Reactivity:	Human, Mouse, Rat
Characteristics:	Monoclonal Antibodies
Purification:	Affinity purification

Target Details

Target:	WHSC1L1
Alternative Name:	NSD3 (WHSC1L1 Products)
Background:	This gene is related to the Wolf-Hirschhorn syndrome candidate-1 gene and encodes a protein

Target Details

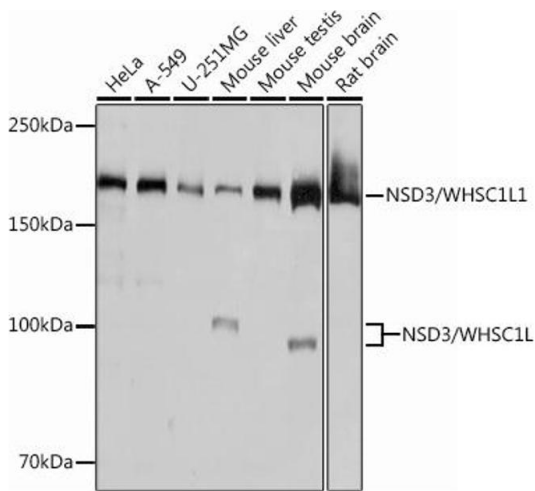
	with PWWP (proline-tryptophan-tryptophan-proline) domains. This protein methylates histone H3 at lysine residues 4 and 27, which represses gene transcription. Two alternatively spliced variants have been described. [provided by RefSeq, May 2015],KMT3F, KMT3G, WHISTLE, WHSC1L1, pp14328,Epigenetics & Nuclear Signaling,NSD3
Molecular Weight:	161kDa
Gene ID:	54904
UniProt:	Q9BZ95

Application Details

Application Notes:	WB,1:500 - 1:2000
Restrictions:	For Research Use only

Handling

Format:	Liquid
Buffer:	PBS with 0.02 % sodium azide,0.05 % BSA,50 % glycerol, pH 7.3.
Preservative:	Sodium azide
Precaution of Use:	This product contains Sodium azide: a POISONOUS AND HAZARDOUS SUBSTANCE which should be handled by trained staff only.
Storage:	-20 °C
Storage Comment:	Store at -20°C. Avoid freeze / thaw cycles.



Western Blotting

Image 1. Western blot analysis of extracts of various cell lines, using NSD3/WHSC1L1 Rabbit mAb at 1:1000 dilution. Secondary antibody: HRP Goat Anti-Rabbit IgG (H+L) (ABIN1684268 and ABIN3020597) at 1:10000 dilution. Lysates/proteins: 25 µg per lane. Blocking buffer: 3 % nonfat dry milk in TBST. Detection: ECL Basic Kit (RM00020). Exposure time: 3s.