



[Go to Product page](#)

Datasheet for ABIN7271391  
**anti-WBP2 antibody (AA 15-140)**

1 Image

Overview

Quantity:	100 µL
Target:	WBP2
Binding Specificity:	AA 15-140
Reactivity:	Human
Host:	Rabbit
Clonality:	Polyclonal
Conjugate:	This WBP2 antibody is un-conjugated
Application:	Western Blotting (WB)

Product Details

Purpose:	WBP2 Rabbit pAb
Immunogen:	Recombinant fusion protein containing a sequence corresponding to amino acids 15-140 of human WBP2 (NP_036610.2).
Sequence:	VNNTESILMS YDHVELTFND MKNVPEAFKG TTKGTVYLTP YRVIFLSK GK DAMQSFMMPF YLMKDCEIKQ PVFGANYIKG TVKAEAGGGW EGSASYKLT F TAGGAIEFGQ RMLQVASQAS RGEVPS
Isotype:	IgG
Cross-Reactivity:	Human, Mouse, Rat
Characteristics:	Polyclonal Antibodies
Purification:	Affinity purification

## Target Details

---

Target:	WBP2
Alternative Name:	WBP2 ( <a href="#">WBP2 Products</a> )
Background:	The globular WW domain is composed of 38 to 40 semiconserved amino acids shared by proteins of diverse functions including structural, regulatory, and signaling proteins. The domain is involved in mediating protein-protein interactions through the binding of polyproline ligands. This gene encodes a WW domain binding protein that is a transcriptional coactivator of estrogen receptor alpha and progesterone receptor. Defects in this gene have been associated with hearing impairment.,WBP2,GRAMD6,WBP-2,Epigenetics & Nuclear Signaling,Nuclear Receptor Signaling,Nuclear hormone receptors,Signal Transduction,WBP2
Molecular Weight:	28kDa
Gene ID:	23558
UniProt:	<a href="#">Q969T9</a>

## Application Details

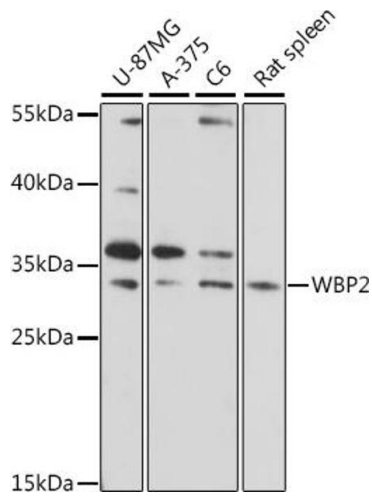
---

Application Notes:	WB,1:500 - 1:2000
Restrictions:	For Research Use only

## Handling

---

Format:	Liquid
Buffer:	PBS with 0.02 % sodium azide,50 % glycerol, pH 7.3.
Preservative:	Sodium azide
Precaution of Use:	This product contains Sodium azide: a POISONOUS AND HAZARDOUS SUBSTANCE which should be handled by trained staff only.
Storage:	-20 °C
Storage Comment:	Store at -20°C. Avoid freeze / thaw cycles.



### Western Blotting

**Image 1.** Western blot analysis of extracts of various cell lines, using WBP2 antibody (ABIN7271391) at 1:1000 dilution. Secondary antibody: HRP Goat Anti-Rabbit IgG (H+L) (ABIN1684268 and ABIN3020597) at 1:10000 dilution. Lysates/proteins: 25 µg per lane. Blocking buffer: 3 % nonfat dry milk in TBST. Detection: ECL Basic Kit (RM00020). Exposure time: 120s.