



[Go to Product page](#)

Datasheet for ABIN7271403  
**anti-XPNPEP3 antibody (AA 1-250)**

2 Images

Overview

Quantity:	100 µL
Target:	XPNPEP3
Binding Specificity:	AA 1-250
Reactivity:	Human
Host:	Rabbit
Clonality:	Polyclonal
Conjugate:	This XPNPEP3 antibody is un-conjugated
Application:	Western Blotting (WB), Immunofluorescence (IF)

Product Details

Purpose:	XPNPEP3 Rabbit pAb
Immunogen:	Recombinant fusion protein containing a sequence corresponding to amino acids 1-250 of human XPNPEP3 (NP_071381.1).
Sequence:	MPWLLSAPKL VPAVANVRGL SGCMLCSQRR YSLQVPERR IPNRYLGQPS PFTHPHLLRP GEVTPGLSQV EYALRRHKLM SLIQKEAQQG SGTDQTVVVL SNPTYMSND IPYTFHQDNN FLYLCGFQEP DSILVLQSLP GKQLPSHKAI LFPVRRDPSR ELWDGPRSGT DGAIALTGVD EAYTLEEFQH LLPKMKAETN MVWYDWMRPS HAQLHSDYMQ PLTEAKAKSK NKVRGVQQLI QRLRLIKSPA
Isotype:	IgG
Cross-Reactivity:	Human, Mouse, Rat
Characteristics:	Polyclonal Antibodies

## Product Details

---

Purification: Affinity purification

## Target Details

---

Target: XPNPEP3

Alternative Name: XPNPEP3 ([XPNPEP3 Products](#))

Background: The protein encoded by this gene belongs to the family of X-pro-aminopeptidases that utilize a metal cofactor, and remove the N-terminal amino acid from peptides with a proline residue in the penultimate position. This protein has been shown to localize to the mitochondria of renal cells, and have a role in ciliary function. Mutations in this gene are associated with nephronophthisis-like nephropathy-1. Alternatively spliced transcript variants encoding different isoforms have been noted for this gene, however, expression of some of these isoforms in vivo is not known.,XPNPEP3,APP3,ICP55,NPHPL1,Signal Transduction,Endocrine & Metabolism,Amino acid metabolism,XPNPEP3

Molecular Weight: 31kDa/32kDa/48kDa/54kDa/57kDa

Gene ID: 63929

UniProt: [Q9NQH7](#)

## Application Details

---

Application Notes: WB,1:500 - 1:2000,IF,1:50 - 1:200

Restrictions: For Research Use only

## Handling

---

Format: Liquid

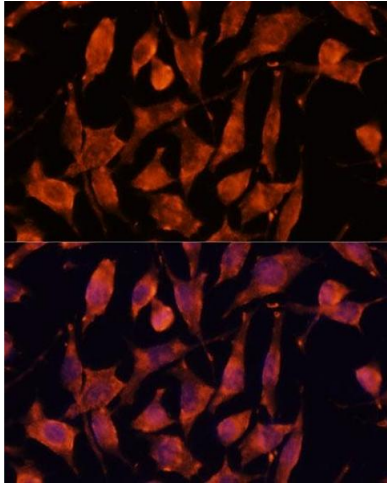
Buffer: PBS with 0.02 % sodium azide,50 % glycerol, pH 7.3.

Preservative: Sodium azide

Precaution of Use: This product contains Sodium azide: a POISONOUS AND HAZARDOUS SUBSTANCE which should be handled by trained staff only.

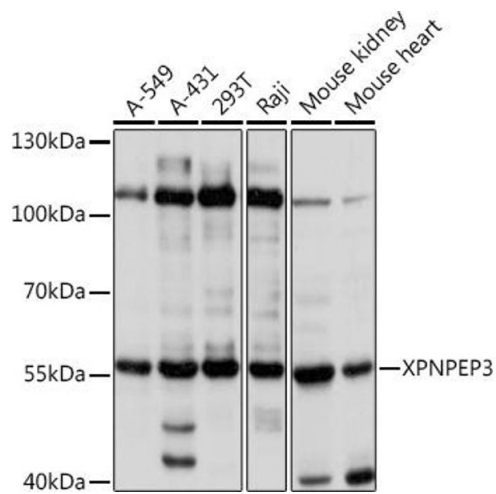
Storage: -20 °C

Storage Comment: Store at -20°C. Avoid freeze / thaw cycles.



### Immunofluorescence

**Image 1.** Immunofluorescence analysis of L929 cells using XPNPEP3 antibody at dilution of 1:100. Blue: DAPI for nuclear staining.



### Western Blotting

**Image 2.** Western blot analysis of extracts of various cell lines, using XPNPEP3 Rabbit pAb at 1:1000 dilution. Secondary antibody: HRP Goat Anti-Rabbit IgG (H+L) (ABIN1684268 and ABIN3020597) at 1:10000 dilution. Lysates/proteins: 25 µg per lane. Blocking buffer: 3 % nonfat dry milk in TBST. Detection: ECL Basic Kit (RM00020). Exposure time: 5s.