

Datasheet for ABIN7271410

**anti-YBX1 antibody**

## 7 Images

[Go to Product page](#)

## Overview

Quantity:	100 µL
Target:	YBX1
Reactivity:	Human
Host:	Rabbit
Clonality:	Monoclonal
Conjugate:	This YBX1 antibody is un-conjugated
Application:	Western Blotting (WB), Immunohistochemistry (IHC), Immunofluorescence (IF), Immunoprecipitation (IP), Chromatin Immunoprecipitation (ChIP)

## Product Details

Purpose:	YB-1/YBX1 Rabbit mAb
Immunogen:	A synthesized peptide derived from human YB-1/YBX1
Isotype:	IgG
Cross-Reactivity:	Human, Mouse, Rat
Characteristics:	Monoclonal Antibodies
Purification:	Affinity purification

## Target Details

Target:	YBX1
Alternative Name:	YBX1 ( <a href="#">YBX1 Products</a> )

## Target Details

**Background:** This gene encodes a highly conserved cold shock domain protein that has broad nucleic acid binding properties. The encoded protein functions as both a DNA and RNA binding protein and has been implicated in numerous cellular processes including regulation of transcription and translation, pre-mRNA splicing, DNA repair and mRNA packaging. This protein is also a component of messenger ribonucleoprotein (mRNP) complexes and may have a role in microRNA processing. This protein can be secreted through non-classical pathways and functions as an extracellular mitogen. Aberrant expression of the gene is associated with cancer proliferation in numerous tissues. This gene may be a prognostic marker for poor outcome and drug resistance in certain cancers. Alternate splicing results in multiple transcript variants. Pseudogenes of this gene are found on multiple chromosomes. [provided by RefSeq, Sep 2015],BP-8, CBF-A, CSDA2, CSDB, DBPB, EFI-A, MDR-NF1, NSEP-1, NSEP1, YB-1, YB1,Cell Biology & Developmental Biology,Embryonic Stem Cells,Epigenetics & Nuclear Signaling,RNA Binding,Stem Cells,Transcription Factors,YBX1

**Molecular Weight:** 50kDa

**Gene ID:** 4904

**UniProt:** [P67809](#)

**Pathways:** [Regulation of Muscle Cell Differentiation](#)

## Application Details

**Application Notes:** WB,1:500 - 1:2000,IHC,1:50 - 1:200,IF,1:50 - 1:200,IP,1:50 - 1:200,ChIP,1:50 - 1:200

**Restrictions:** For Research Use only

## Handling

**Format:** Liquid

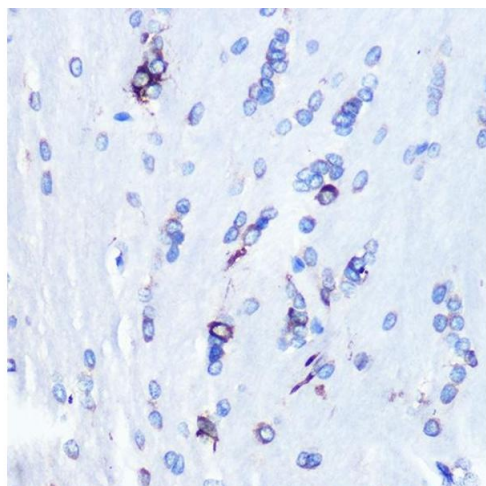
**Buffer:** PBS with 0.02 % sodium azide,0.05 % BSA,50 % glycerol, pH 7.3.

**Preservative:** Sodium azide

**Precaution of Use:** This product contains Sodium azide: a POISONOUS AND HAZARDOUS SUBSTANCE which should be handled by trained staff only.

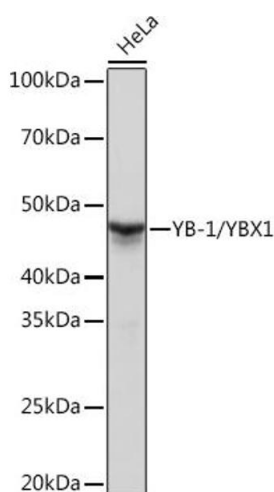
**Storage:** -20 °C

**Storage Comment:** Store at -20°C. Avoid freeze / thaw cycles.



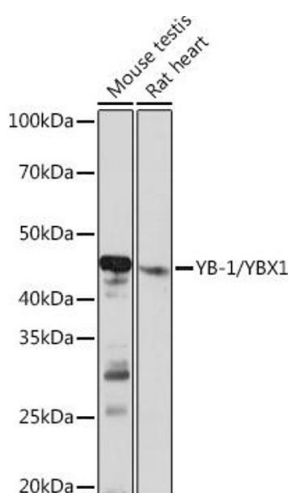
### Immunohistochemistry

**Image 1.** Immunohistochemistry of paraffin-embedded rat brain using YB-1/YBX1 Rabbit mAb (ABIN7271410) at dilution of 1:100 (40x lens). Perform microwave antigen retrieval with 10 mM PBS buffer pH 7.2 before commencing with IHC staining protocol.



### Western Blotting

**Image 2.** Western blot analysis of extracts of HeLa cells, using YB-1/YBX1 Rabbit mAb (ABIN7271410) at 1:1000 dilution. Secondary antibody: HRP Goat Anti-Rabbit IgG (H+L) (ABIN1684268 and ABIN3020597) at 1:10000 dilution. Lysates/proteins: 25 µg per lane. Blocking buffer: 3 % nonfat dry milk in TBST. Detection: ECL Basic Kit (RM00020). Exposure time: 1s.



### Western Blotting

**Image 3.** Western blot analysis of extracts of various cell lines, using YB-1/YBX1 Rabbit mAb (ABIN7271410) at 1:1000 dilution. Secondary antibody: HRP Goat Anti-Rabbit IgG (H+L) (ABIN1684268 and ABIN3020597) at 1:10000 dilution. Lysates/proteins: 25 µg per lane. Blocking buffer: 3 % nonfat dry milk in TBST. Detection: ECL Basic Kit (RM00020). Exposure time: 10s.

Please check the [product details page](#) for more images. Overall 7 images are available for ABIN7271410.