

Datasheet for ABIN7271418

anti-YAP1 antibody

7 Images

[Go to Product page](#)

Overview

Quantity:	100 µL
Target:	YAP1
Reactivity:	Human
Host:	Rabbit
Clonality:	Monoclonal
Conjugate:	This YAP1 antibody is un-conjugated
Application:	Western Blotting (WB), Immunohistochemistry (IHC), Immunofluorescence (IF), Immunoprecipitation (IP)

Product Details

Purpose:	YAP1 Rabbit mAb
Immunogen:	A synthesized peptide derived from human YAP1
Isotype:	IgG
Cross-Reactivity:	Human, Mouse
Characteristics:	Monoclonal Antibodies
Purification:	Affinity purification

Target Details

Target:	YAP1
Alternative Name:	YAP1 (YAP1 Products)

Target Details

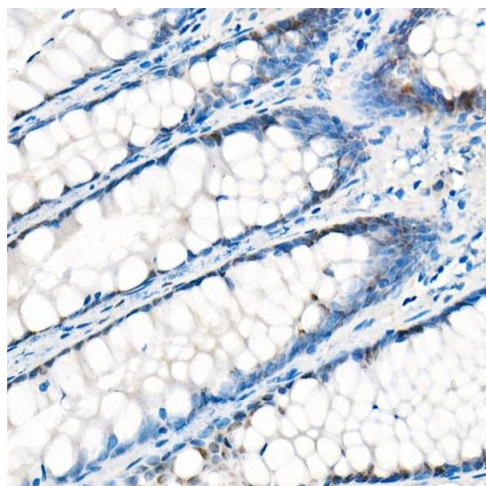
Background:	This gene encodes a downstream nuclear effector of the Hippo signaling pathway which is involved in development, growth, repair, and homeostasis. This gene is known to play a role in the development and progression of multiple cancers as a transcriptional regulator of this signaling pathway and may function as a potential target for cancer treatment. Alternative splicing results in multiple transcript variants encoding different isoforms. [provided by RefSeq, Aug 2013],COB1,YAP,YAP2,YAP65,YKI,YAP1,Cancer,Cell Biology & Developmental Biology,Epigenetics & Nuclear Signaling,Hippo Signaling Pathway,Kinase,Kinase_Tyrosine kinases,Protein phosphorylation,Signal Transduction,Transcription Factors,YAP1
Molecular Weight:	65kDa
Gene ID:	10413
UniProt:	P46937
Pathways:	MAPK Signaling , Stem Cell Maintenance , Regulation of Lipid Metabolism by PPARalpha

Application Details

Application Notes:	WB,1:500 - 1:2000,IHC,1:50 - 1:200,IF,1:50 - 1:200,IP,1:50 - 1:200
Restrictions:	For Research Use only

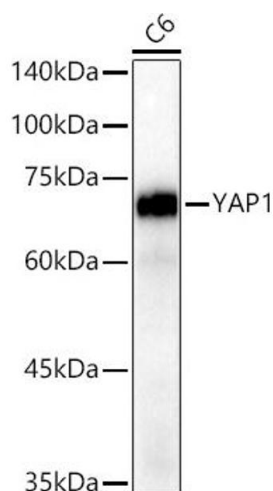
Handling

Format:	Liquid
Buffer:	PBS with 0.02 % sodium azide,0.05 % BSA,50 % glycerol, pH 7.3.
Preservative:	Sodium azide
Precaution of Use:	This product contains Sodium azide: a POISONOUS AND HAZARDOUS SUBSTANCE which should be handled by trained staff only.
Storage:	-20 °C
Storage Comment:	Store at -20°C. Avoid freeze / thaw cycles.



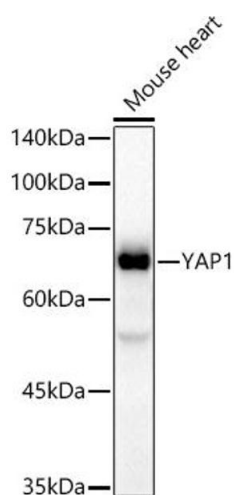
Immunohistochemistry

Image 1. Immunohistochemistry of paraffin-embedded Human liver (negative control sample) using Y antibody (ABIN7271418) at dilution of 1:1000 (40x lens). Perform high pressure antigen retrieval with 10 mM citrate buffer pH 6.0 before commencing with IHC staining protocol.



Western Blotting

Image 2. Western blot analysis of extracts of C6 cells, using Y antibody (ABIN7271418) at 1:20000 dilution. Secondary antibody: HRP Goat Anti-Rabbit IgG (H+L) (ABIN1684268 and ABIN3020597) at 1:10000 dilution. Lysates/proteins: 25 µg per lane. Blocking buffer: 3 % nonfat dry milk in TBST. Detection: ECL Basic Kit (RM00020). Exposure time: 1s.



Western Blotting

Image 3. Western blot analysis of extracts of Mouse heart, using Y antibody (ABIN7271418) at 1:20000 dilution. Secondary antibody: HRP Goat Anti-Rabbit IgG (H+L) (ABIN1684268 and ABIN3020597) at 1:10000 dilution. Lysates/proteins: 25 µg per lane. Blocking buffer: 3 % nonfat dry milk in TBST. Detection: ECL Basic Kit (RM00020). Exposure time: 20s.

Please check the [product details page](#) for more images. Overall 7 images are available for ABIN7271418.