



[Go to Product page](#)

Datasheet for ABIN7271420
anti-YIPF7 antibody (AA 1-80)

1 Image

Overview

Quantity:	100 µL
Target:	YIPF7
Binding Specificity:	AA 1-80
Reactivity:	Human
Host:	Rabbit
Clonality:	Polyclonal
Conjugate:	This YIPF7 antibody is un-conjugated
Application:	Western Blotting (WB)

Product Details

Purpose:	YIPF7 Rabbit pAb
Immunogen:	Recombinant fusion protein containing a sequence corresponding to amino acids 1-80 of human YIPF7 (NP_872398.2).
Sequence:	MDLLKISHTK LHLLDLSIK NKQRMSNLAQ FDSDFYQSNF TIDNQEQSGN DSNAYGNLYG SRKQQAGEQP QPASFVPSEM
Isotype:	IgG
Cross-Reactivity:	Rat
Characteristics:	Polyclonal Antibodies
Purification:	Affinity purification

Target Details

Target:	YIPF7
Alternative Name:	YIPF7 (YIPF7 Products)
Background:	YIPF7,FinGER9,Signal Transduction,YIPF7
Molecular Weight:	7kDa/14kDa/23kDa/30kDa
Gene ID:	285525
UniProt:	Q8N8F6

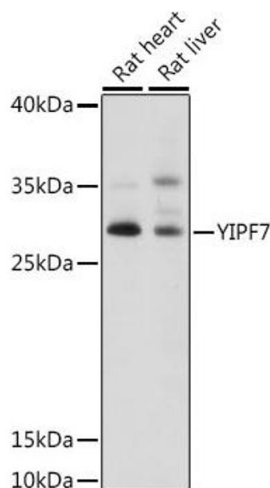
Application Details

Application Notes:	WB,1:500 - 1:2000
Restrictions:	For Research Use only

Handling

Format:	Liquid
Buffer:	PBS with 0.02 % sodium azide,50 % glycerol, pH 7.3.
Preservative:	Sodium azide
Precaution of Use:	This product contains Sodium azide: a POISONOUS AND HAZARDOUS SUBSTANCE which should be handled by trained staff only.
Storage:	-20 °C
Storage Comment:	Store at -20°C. Avoid freeze / thaw cycles.

Images



Western Blotting

Image 1. Western blot analysis of extracts of various cell lines, using YIPF7 antibody (ABIN7271420) at 1:1000 dilution. Secondary antibody: HRP Goat Anti-Rabbit IgG (H+L) (ABIN1684268 and ABIN3020597) at 1:10000 dilution. Lysates/proteins: 25 µg per lane. Blocking buffer: 3 % nonfat dry milk in TBST. Detection: ECL Basic Kit (RM00020). Exposure time: 15s.