



Datasheet for ABIN7271422
anti-YPEL5 antibody (AA 1-121)



[Go to Product page](#)

1 Image

Overview

Quantity:	100 µL
Target:	YPEL5
Binding Specificity:	AA 1-121
Reactivity:	Human
Host:	Rabbit
Clonality:	Polyclonal
Application:	Western Blotting (WB)

Product Details

Purpose:	YPEL5 Rabbit pAb
Immunogen:	Recombinant fusion protein containing a sequence corresponding to amino acids 1-121 of human YPEL5 (NP_057145.1).
Sequence:	MGRIFLDHIG GTRLFSCANC DTILTNRSEL ISTRFTGATG RAFLFNKVVN LQYSEVQDRV MLTGRHMVRD VSCKNCNSKL GWIYEFATED SQRYKEGRVI LERALVRESE GFEEHVPSDN S
Isotype:	IgG
Cross-Reactivity:	Human, Mouse, Rat
Characteristics:	Polyclonal Antibodies
Purification:	Affinity purification

Target Details

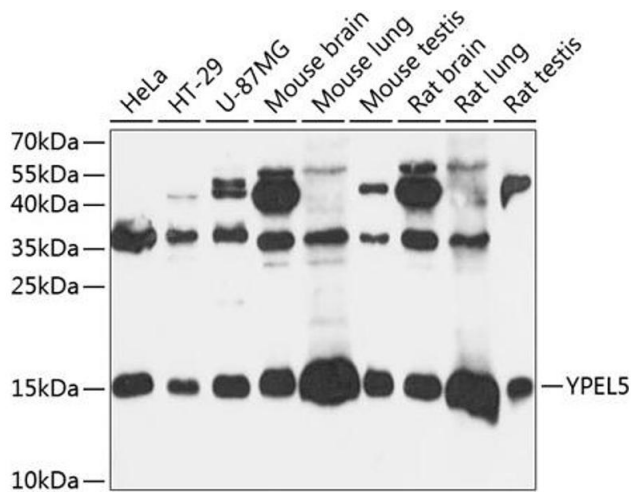
Target:	YPEL5
Alternative Name:	YPEL5 (YPEL5 Products)
Background:	Component of the CTLH E3 ubiquitin-protein ligase complex that selectively accepts ubiquitin from UBE2H and mediates ubiquitination and subsequent proteasomal degradation of the transcription factor HBP1. Required for normal cell proliferation (By similarity.,YPEL5,CGI-127,Cell Biology & Developmental Biology,YPEL5
Molecular Weight:	13kDa
Gene ID:	51646
UniProt:	P62699

Application Details

Application Notes:	WB,1:500 - 1:2000
Restrictions:	For Research Use only

Handling

Format:	Liquid
Buffer:	PBS with 0.02 % sodium azide,50 % glycerol, pH 7.3.
Preservative:	Sodium azide
Precaution of Use:	This product contains Sodium azide: a POISONOUS AND HAZARDOUS SUBSTANCE which should be handled by trained staff only.
Storage:	-20 °C
Storage Comment:	Store at -20°C. Avoid freeze / thaw cycles.



Western Blotting

Image 1. Western blot analysis of extracts of various cell lines, using YPEL5 antibody (ABIN7271422) at 1:3000 dilution. Secondary antibody: HRP Goat Anti-Rabbit IgG (H+L) (ABIN1684268 and ABIN3020597) at 1:10000 dilution. Lysates/proteins: 25 µg per lane. Blocking buffer: 3 % nonfat dry milk in TBST. Detection: ECL Basic Kit (RM00020). Exposure time: 90s.