



[Go to Product page](#)

Datasheet for ABIN7271425

anti-YTHDC2 antibody (AA 1131-1430)

1 Image

Overview

Quantity:	100 µL
Target:	YTHDC2
Binding Specificity:	AA 1131-1430
Reactivity:	Human
Host:	Rabbit
Clonality:	Polyclonal
Application:	Western Blotting (WB)

Product Details

Purpose:	YTHDC2 Rabbit pAb
Immunogen:	Recombinant fusion protein containing a sequence corresponding to amino acids 1131-1430 of human YTHDC2 (NP_073739.3).
Sequence:	HSLFLRRMRA PSKPWSQVDE ATIRAIIVL STEEQSAGLQ QPSGIGQRPR PMSSEELPLA SSWRSNNSRK SSADTEFSDE CTTAERVLTK SPSPALHPPQ KYKDRGILHP KRGTEDRSDQ SSLKSTDSSS YPSPCASPP PSSGKGSKSP SPRPNMPVRY FIMKSSNLRN LEISQQKGIW STTPSNERKL NRAFWEISSV YLVFSVQSG HFQGFSSRMSS EIGREKSQDW GSAGLGGVFK VEWIRKESLP FQFAHLLNP WNDNKKVQIS RDGQELEPLV GEQLQLWER LPLGEKNTTD
Isotype:	IgG
Cross-Reactivity:	Human, Mouse, Rat
Characteristics:	Polyclonal Antibodies
Purification:	Affinity purification

Target Details

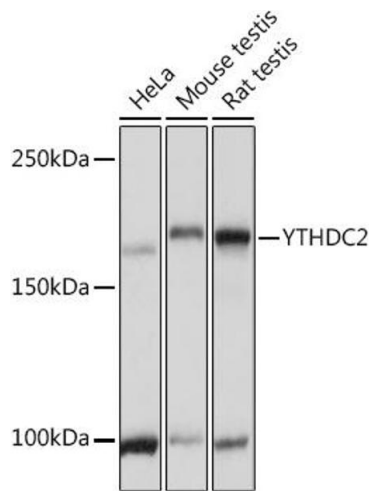
Target:	YTHDC2
Alternative Name:	YTHDC2 (YTHDC2 Products)
Background:	<p>This gene encodes a member of the DEAH (Asp-Glu-Ala-His) subfamily of proteins, part of the DEAD (Asp-Glu-Ala-Asp) box family of RNA helicases. The encoded protein binds to N6-methyladenosine, a common modified RNA nucleotide that is enriched in the stop codons and 3' UTRs of eukaryotic messenger RNAs. Binding of proteins to this modified nucleotide may regulate mRNA translation and stability. This gene may be associated with susceptibility to pancreatic cancer in human patients, and knockdown of this gene resulted in reduced proliferation in a human liver cancer cell line. [provided by RefSeq, Sep 2016],YTHDC2;CAHL,Epigenetics & Nuclear Signaling,RNA Binding,Cell Biology & Developmental Biology,YTHDC2</p>
Molecular Weight:	160kDa
Gene ID:	64848
UniProt:	Q9H6S0

Application Details

Application Notes:	WB,1:500 - 1:2000
Restrictions:	For Research Use only

Handling

Format:	Liquid
Buffer:	PBS with 0.02 % sodium azide,50 % glycerol, pH 7.3.
Preservative:	Sodium azide
Precaution of Use:	This product contains Sodium azide: a POISONOUS AND HAZARDOUS SUBSTANCE which should be handled by trained staff only.
Storage:	-20 °C
Storage Comment:	Store at -20°C. Avoid freeze / thaw cycles.



Western Blotting

Image 1. Western blot analysis of extracts of various cell lines, using YTHDC2 Rabbit pAb (ABIN7271425) at 1:3000 dilution. Secondary antibody: HRP Goat Anti-Rabbit IgG (H+L) (ABIN1684268 and ABIN3020597) at 1:10000 dilution. Lysates/proteins: 25 µg per lane. Blocking buffer: 3 % nonfat dry milk in TBST. Detection: ECL Basic Kit (RM00020). Exposure time: 1s.