



[Go to Product page](#)

Datasheet for ABIN7271444

anti-ZSCAN21 antibody (AA 130-280)

1 Image

Overview

Quantity:	100 µL
Target:	ZSCAN21 (Zscan21)
Binding Specificity:	AA 130-280
Reactivity:	Human
Host:	Rabbit
Clonality:	Polyclonal
Conjugate:	This ZSCAN21 antibody is un-conjugated
Application:	Western Blotting (WB)

Product Details

Purpose:	ZSCAN21 Rabbit pAb
Immunogen:	Recombinant fusion protein containing a sequence corresponding to amino acids 130-280 of human ZSCAN21 (NP_666019.1).
Sequence:	PGHQVSTPPN EQKPVWEKIS SSGTAKESPS SMQPQPLETS HKYESWGPLY IQESGEEQEF AQDPRKVRDC RLSTQHEESA DEQKGSEAEG LKGDIIIVII ANKPEASLER QCVNLENEKG TKPPLQEAGS KKGRESVPTK PTPGERRYIC A
Isotype:	IgG
Cross-Reactivity:	Human, Mouse, Rat
Characteristics:	Polyclonal Antibodies
Purification:	Affinity purification

Target Details

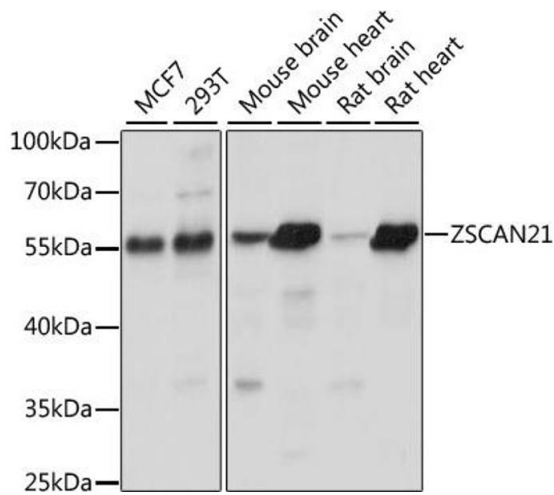
Target:	ZSCAN21 (Zscan21)
Alternative Name:	ZSCAN21 (Zscan21 Products)
Background:	Strong transcriptional activator (By similarity. Plays an important role in spermatogenesis, essential for the progression of meiotic prophase I in spermatocytes (By similarity.,ZSCAN21,NY-REN-21,ZNF38,Zipro1,Epigenetics & Nuclear Signaling,Transcription Factors,ZSCAN21
Molecular Weight:	53kDa
Gene ID:	7589
UniProt:	Q9Y5A6

Application Details

Application Notes:	WB,1:200 - 1:2000
Restrictions:	For Research Use only

Handling

Format:	Liquid
Buffer:	PBS with 0.02 % sodium azide,50 % glycerol, pH 7.3.
Preservative:	Sodium azide
Precaution of Use:	This product contains Sodium azide: a POISONOUS AND HAZARDOUS SUBSTANCE which should be handled by trained staff only.
Storage:	-20 °C
Storage Comment:	Store at -20°C. Avoid freeze / thaw cycles.



Western Blotting

Image 1. Western blot analysis of extracts of various cell lines, using ZSC antibody (ABIN7271444) at 1:1000 dilution. Secondary antibody: HRP Goat Anti-Rabbit IgG (H+L) (ABIN1684268 and ABIN3020597) at 1:10000 dilution. Lysates/proteins: 25 µg per lane. Blocking buffer: 3 % nonfat dry milk in TBST. Detection: ECL Basic Kit (RM00020). Exposure time: 10s.