



[Go to Product page](#)

Datasheet for ABIN7271457  
**anti-ZNF143 antibody (AA 437-638)**

1 Image

Overview

Quantity:	100 µL
Target:	ZNF143
Binding Specificity:	AA 437-638
Reactivity:	Human
Host:	Rabbit
Clonality:	Polyclonal
Conjugate:	This ZNF143 antibody is un-conjugated
Application:	Western Blotting (WB)

Product Details

Purpose:	ZNF143 Rabbit pAb
Immunogen:	Recombinant fusion protein containing a sequence corresponding to amino acids 437-638 of human ZNF143 (NP_003433.3).
Sequence:	RTAHNDTEPI EEEQEAFEP PPGQGEDVLK GSQITYVTGV EGDDVSTQV ATVTQSGLSQ QVTLISQDGT QHVNISQADM QAIGNITMV TQDGPITVP AHDAVISSAG THSVAMVTAE GTEGEQVAIV AQDLAAFHTA SSEMGHQHS HHLVTTETRP LTLVATSNGT QIAVQLGEQP SLEEAIAS RIQQGETPGL DD
Isotype:	IgG
Cross-Reactivity:	Human, Mouse, Rat
Characteristics:	Polyclonal Antibodies

## Product Details

---

Purification: Affinity purification

## Target Details

---

Target: ZNF143

Alternative Name: ZNF143 ([ZNF143 Products](#))

Background: Transcriptional activator. Activates the gene for selenocysteine tRNA (tRNA<sup>sec</sup>). Binds to the SPH motif of small nuclear RNA (snRNA gene promoters). Participates in efficient U6 RNA polymerase III transcription via its interaction with CHD8, SBF, STAF, pH Z-1, ZNF143, Epigenetics & Nuclear Signaling, Transcription Factors, DNA Damage & Repair, ZNF143

Molecular Weight: 65kDa/68kDa

Gene ID: 7702

UniProt: [P52747](#)

## Application Details

---

Application Notes: WB, 1:500 - 1:2000

Restrictions: For Research Use only

## Handling

---

Format: Liquid

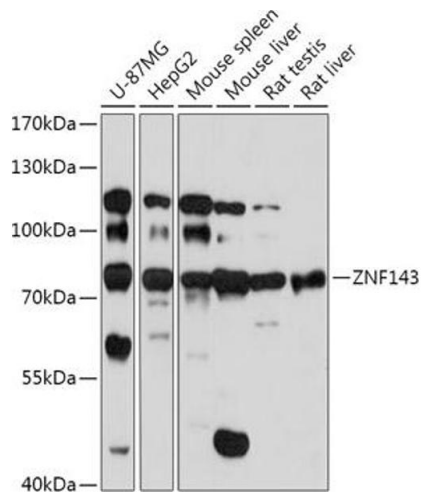
Buffer: PBS with 0.02 % sodium azide, 50 % glycerol, pH 7.3.

Preservative: Sodium azide

Precaution of Use: This product contains Sodium azide: a POISONOUS AND HAZARDOUS SUBSTANCE which should be handled by trained staff only.

Storage: -20 °C

Storage Comment: Store at -20°C. Avoid freeze / thaw cycles.



### Western Blotting

**Image 1.** Western blot analysis of extracts of various cell lines, using ZNF143 antibody (ABIN7271457) at 1:1000 dilution. Secondary antibody: HRP Goat Anti-Rabbit IgG (H+L) (ABIN1684268 and ABIN3020597) at 1:10000 dilution. Lysates/proteins: 25 µg per lane. Blocking buffer: 3% nonfat dry milk in TBST. Detection: ECL Basic Kit (RM00020). Exposure time: 90s.