



[Go to Product page](#)

Datasheet for ABIN7271479  
**anti-ZNF408 antibody (AA 1-240)**

1 Image

Overview

Quantity:	100 µL
Target:	ZNF408
Binding Specificity:	AA 1-240
Reactivity:	Human
Host:	Rabbit
Clonality:	Polyclonal
Conjugate:	This ZNF408 antibody is un-conjugated
Application:	Western Blotting (WB), Immunofluorescence (IF)

Product Details

Purpose:	ZNF408 Rabbit pAb
Immunogen:	Recombinant fusion protein containing a sequence corresponding to amino acids 1-240 of human ZNF408 (NP_079017.1).
Sequence:	MEEAEELLLE GKALQLARE PRLGLDLGWN PSGEGCTQGL KDVPPEPTRD ILALKSLPRG LALGPSLAKE QRLGVWCVGD PLQPGLLWGP LEEESASKEK GEGVKPRQEE NLSLGPWGDV CACEQSSGWT SLVQRGRLES EGNVAPVRIS ERLHLQVYQL VLPGSELLLW PQPSSEGPSL TQPGLDKAEA VAVVTEVESA VQQEVASPGE DAAEPCIDPG SQSPSGIQAE NMVSPGLKFP
Isotype:	IgG
Cross-Reactivity:	Human
Characteristics:	Polyclonal Antibodies

## Product Details

---

Purification: Affinity purification

## Target Details

---

Target: ZNF408

Alternative Name: ZNF408 ([ZNF408 Products](#))

Background: The protein encoded by this gene contains ten tandem zinc fingers and an N-terminal SET domain, so it is likely a DNA binding protein that interacts with other proteins. In adults, the encoded protein is expressed most highly in retina. Consequently, defects in this gene have been associated with familial exudative vitreoretinopathy (FEVR) and retinitis pigmentosa (RP).,ZNF408,EVR6,RP72,Epigenetics & Nuclear Signaling,Transcription Factors,ZNF408

Molecular Weight: 78kDa

Gene ID: 79797

UniProt: [Q9H9D4](#)

## Application Details

---

Application Notes: WB,1:500 - 1:2000,IF,1:50 - 1:200

Restrictions: For Research Use only

## Handling

---

Format: Liquid

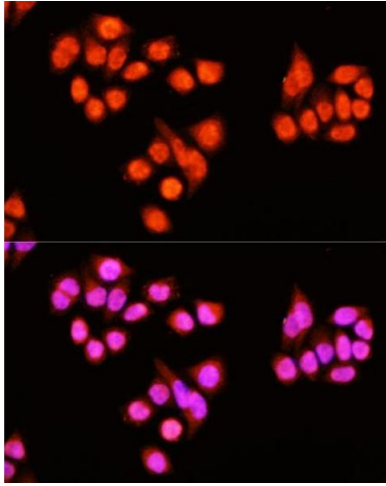
Buffer: PBS with 0.02 % sodium azide,50 % glycerol, pH 7.3.

Preservative: Sodium azide

Precaution of Use: This product contains Sodium azide: a POISONOUS AND HAZARDOUS SUBSTANCE which should be handled by trained staff only.

Storage: -20 °C

Storage Comment: Store at -20°C. Avoid freeze / thaw cycles.



### Immunofluorescence

**Image 1.** Immunofluorescence analysis of HeLa cells using ZNF408 antibody at dilution of 1:100 (40x lens). Blue: DAPI for nuclear staining.