



[Go to Product page](#)

Datasheet for ABIN7271536

anti-ZIC1 antibody

1 Image

Overview

Quantity:	100 µL
Target:	ZIC1
Reactivity:	Human
Host:	Rabbit
Clonality:	Monoclonal
Conjugate:	This ZIC1 antibody is un-conjugated
Application:	Western Blotting (WB)

Product Details

Purpose:	ZIC1 Rabbit mAb
Immunogen:	A synthesized peptide derived from human ZIC1
Isotype:	IgG
Cross-Reactivity:	Human, Mouse, Rat
Characteristics:	Monoclonal Antibodies
Purification:	Affinity purification

Target Details

Target:	ZIC1
Alternative Name:	ZIC1 (ZIC1 Products)
Background:	This gene encodes a member of the ZIC family of C2H2-type zinc finger proteins. Members of

Target Details

this family are important during development. Aberrant expression of this gene is seen in medulloblastoma, a childhood brain tumor. This gene is closely linked to the gene encoding zinc finger protein of the cerebellum 4, a related family member on chromosome 3. This gene encodes a transcription factor that can bind and transactivate the apolipoprotein E gene.

[provided by RefSeq, Jul 2008],CRS6, ZIC, ZNF201,Epigenetics & Nuclear Signaling,Neuroscience,Signal Transduction,Transcription Factors,ZIC1

Molecular Weight: 48kDa

Gene ID: 7545

UniProt: [Q15915](#)

Application Details

Application Notes: WB,1:500 - 1:2000

Restrictions: For Research Use only

Handling

Format: Liquid

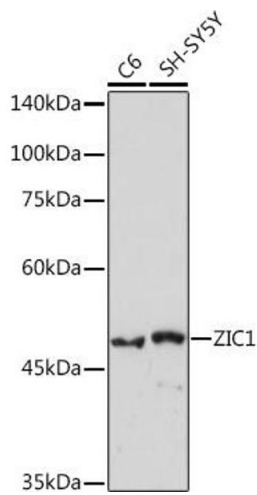
Buffer: PBS with 0.02 % sodium azide,0.05 % BSA,50 % glycerol, pH 7.3.

Preservative: Sodium azide

Precaution of Use: This product contains Sodium azide: a POISONOUS AND HAZARDOUS SUBSTANCE which should be handled by trained staff only.

Storage: -20 °C

Storage Comment: Store at -20°C. Avoid freeze / thaw cycles.



Western Blotting

Image 1. Western blot analysis of extracts of various cell lines, using ZIC1 Rabbit mAb (ABIN7271536) at 1:1000 dilution. Secondary antibody: HRP Goat Anti-Rabbit IgG (H+L) (ABIN1684268 and ABIN3020597) at 1:10000 dilution. Lysates/proteins: 25 µg per lane. Blocking buffer: 3% nonfat dry milk in TBST. Detection: ECL Basic Kit (RM00020). Exposure time: 180s.